



## PRESENTATION OUTLINE

1. Design progress
2. Songhees, Esquimalt Nations and IED support
3. Partners and community support
4. Public consultation
5. Summary

# Spectrum Community Turf Project Progress Report

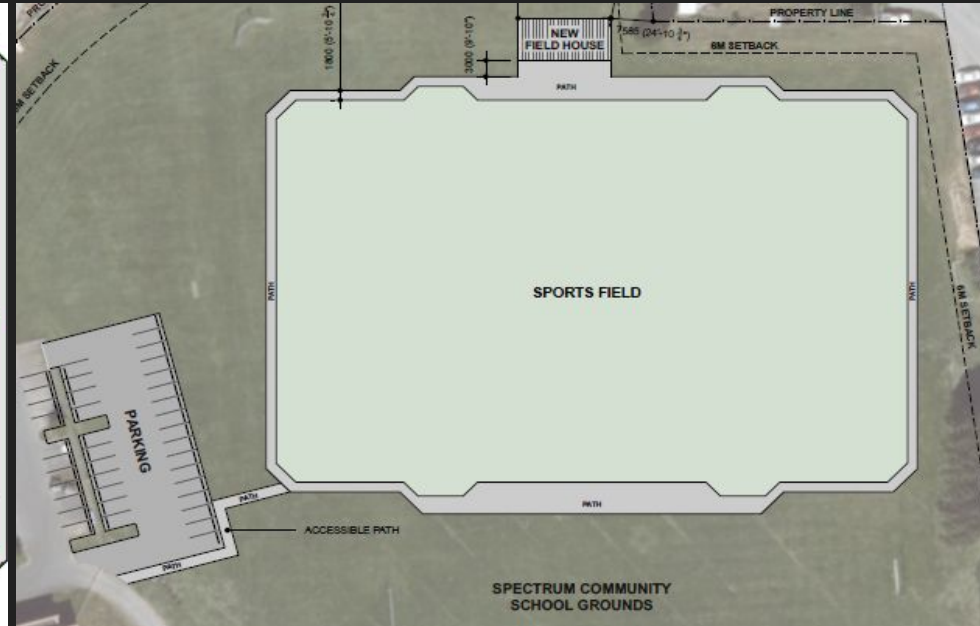
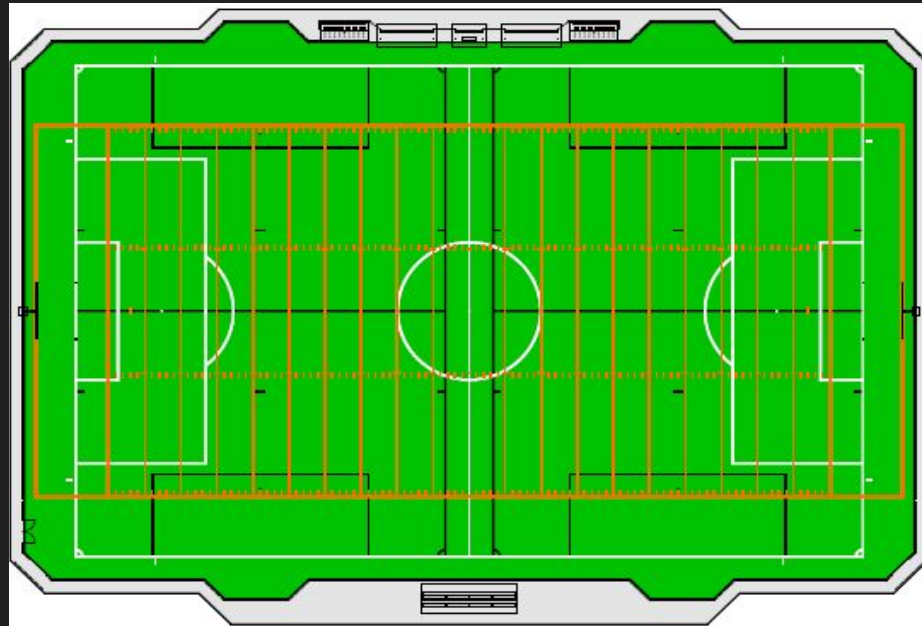
**Presented:** October 2023

**Presented to:** SD61 Ops Committee

**Presented by:** Spectrum Community Turf Project Committee

# 1. Design Progress

- Worked with SD61 Facilities, McElhanney Engineering, and our sports architect on a design plan for consideration





# Concept Layout



# 1. Design progress - NEW PLANS

- Field Design Plan (Complete)
- Concrete Path Plan (Complete)
- Fencing Elevation Plan (Complete)
- Drainage Plan (Complete)
- Shelters Plan (Complete)
- Building Plan (CONCEPT ONLY - Phase 2 after field)

[ALL  
PLANS  
CLICK  
HERE](#)

# 1. Building Design Concept (phase 2)

- Recently designed with architect Annie C (CONCEPT DESIGN ONLY - NOT FINAL)
- Working with SD61/IED on Indigenous artist protocols



The artwork shown in the renders at right has been used solely as an example for discussion.

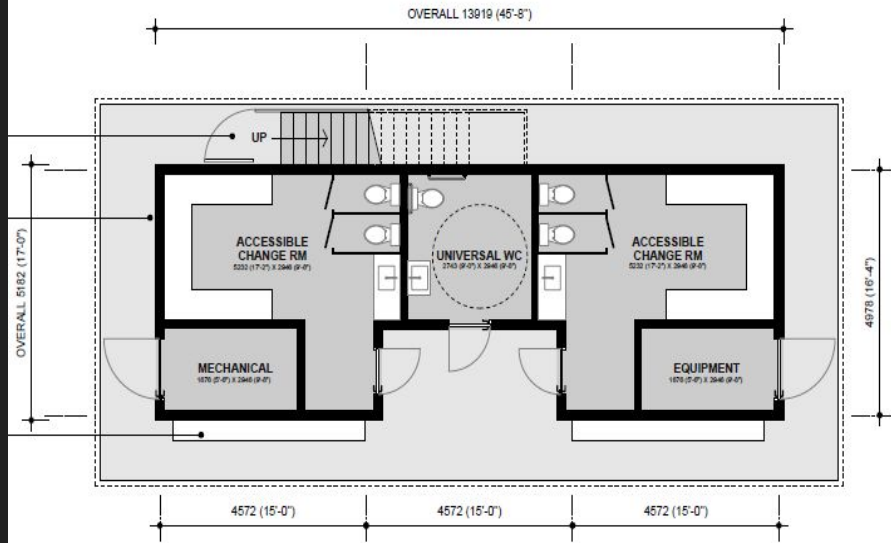
Artwork "We are Connected" is by Karl Morgan



# 1. Building (Phase 2) Design Progress

## Field House

The Field House is screened on three sides with perforated panels to protect occupants from wind and sun during matches, as well as create a multipurpose space that can be used for events, gatherings, and as an outdoor classroom. The panels turn the facades into canvases for an artist's interpretation. Possible themes for the work include: indigenous knowledge, sport, community, and nature.



The artwork shown in the renders at right has been used solely as an example for discussion.

Artwork "We are Connected" is by Karl Morgan

## 2. Songhees, Esquimalt Nations and IED Support

- Songhees and Esquimalt Nations have agreed to support our turf project
- Helped shape deliverables of TRC's Call to Actions #88 & 89

### 3. Partners and Community Support





### 3. Partners and Community Support

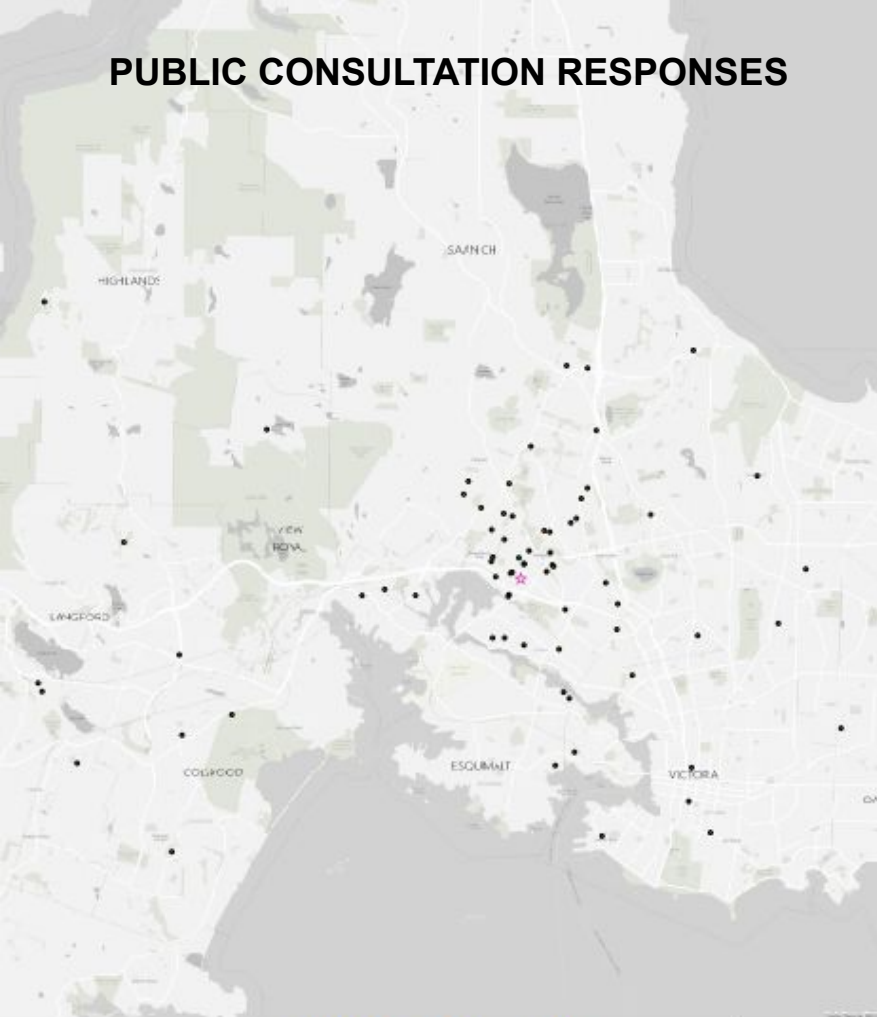
- Saanich Councillor Mena Westhaver is on our committee
- Met with Saanich Mayor Dean Murdock
- McElhanney Engineering is completely behind project
- In-Kind donation potential very high (brings price down)
- Ran a fundraising process to identify top 100 donors
- Now ready (with new plans) to talk to in-kind & financial donors to bridge stakeholder gap

# 4. Public Consultation

- Ran two public consultation nights with great support



## PUBLIC CONSULTATION RESPONSES

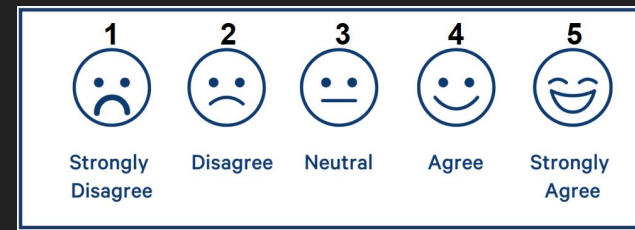


OPEN HOUSE & ONLINE QUESTIONNAIRE:  
PROJECT SUPPORT RESPONSES vs RESIDENCY

**Legend**  
Blue Location  
Pink Star Project Site  
Black Dot Survey Replies

## 4. Public Consultation

- Great community support
- Most recent survey - 75 responses
- 4.72 / 5



## 5. In Summary

- Worked with and supported by both SD61 and the local Nations.
- New plans from sports and building architects
- We hope we have your continued support