



SCHEMATIC DESIGN PHASE PUBLIC OPEN HOUSE NO.2:

WHAT WE HAVE HEARD



KMBR | ARCHITECTS
PLANNERS

300 – 152 West Hastings Street
Vancouver BC, V6B 1G8
October 3, 2022

EVENT SUMMARY

Public Open House #2

Date:	March 3, 2022, 6:00 - 8:00 p.m.
Location:	Cedar Hill Middle School Gymnasium
Participants:	75 community members, SD61 representatives, KMBR architects representatives
Format:	In-person gallery style display of boards and Q&A
Attendees included:	<ul style="list-style-type: none"> • Neighbours from Gregory Place, Garnet, and Rose Gardens • Members of the public general from other parts of Saanich • Teaching staff • Parents/guardians of current students • Parents/guardians of future students

The open houses were advertised in the Times Colonist and Saanich newspaper. The School District sent out a media release to promote the event and earned coverage with local radio stations and papers (CFAX, CTV, CHEK, Black Press, etc.). The media release was also sent to the School District's 3,500+ staff members. The School District advertised on all their social channels (Facebook, Twitter and Instagram). Letters with invitations to the open house were extended to Rose Garden residents and nearby community associations. The school administration also sent invitations to the Parent Advisory Committee (PAC). In addition, when the project was first announced the School District extended invitations to nearby community associations and Indigenous communities and organizations to be part of the process/conversation.

The event was organized by School District staff with the participation of the Principal and Vice-principal from Cedar Hill Middle School, KMBR Architects, and representatives from the School District. It was an in-person open house to update the public on the status of the project including the proposed location of the new school on the site, tree retention and demolition, pick up and drop off, proposed parking, driveways, and other site amenities. There were eight (8) informational boards and ten (10) boards with questions seeking public input. The 18 boards included the following:

- An introductory section that focused on the current conditions of the site, project timeline and milestones, as well as the surrounding neighbourhoods and neighbours (4 boards);
- A section that showcased the previous public engagement findings (2 boards);
- The last section that focused on the site design including: the proposed location of the new school, proposed parking, tree retention and demolition, vehicle circulation, pickup and drop-off options, pedestrian and bike access to site, site amenities desired by the community, and elements from the existing school that are desired to be retained.

Participants were encouraged to provide responses to the prompting questions using sticky notes or by adding stickers that show their preferences. A table was also set up in the center of the room with comment cards for participants to provide thoughts and comments regarding any topic that interested or concerned them. Members of KMBR's design team and the School District were on hand to answer questions and listen to comments. All feedback was recorded and incorporated into this document.



BOARDS WITH PUBLIC INPUT TO QUESTIONS



8.1 VEHICLE CIRCULATION

Question: *"Do you support adding a second driveway to improve vehicular circulation on site?"*

The majority of the respondents supported adding a second driveway that will serve on site pick-up and drop-off, as well as parking access. Both driveways were shown from Gregory Place. Concerns were noted by numerous residents of Gregory Place and two parents who were concerned about increased volume of traffic trying to turn left from Gregory Place onto Cedar Hill Road.

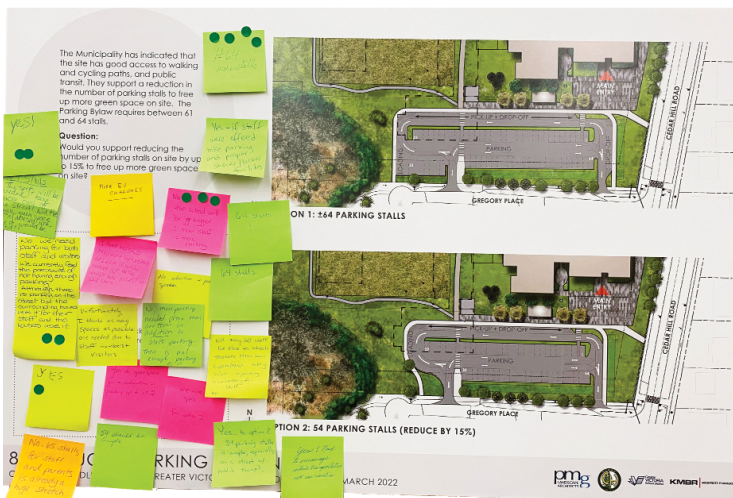
8.2 PICK-UP AND DROP-OFF OPTIONS

Question: *"Do you support adding onsite pick-up and drop-off in addition to the existing pick-up and drop-off on street?"*

Respondents raised concerns that adding on site drop-off could increase traffic on Gregory Place and create a traffic back up for left-hand turns onto Cedar Hill Road off Gregory Place. There were people supportive of the idea of on site pick-up and drop-off as it could improve safety on Cedar Hill Road. This item created a split opinion between residents of Gregory Place who do not wish to see more traffic added to their street and parents who were mostly in support of the idea. There were also voices that suggest increase bike use could alleviate traffic.



Note: Green dots denote when a respondent agreed with someone else's statement.



8.3 REDUCED PARKING OPTION

Question: *"Would you support reducing the number of parking stalls on site by up to 15% to free up more green space?"*

The majority of the respondents voted to have more parking. Twelve responded to reduce. Twenty-one responded to provide the full parking count per the bylaw to ensure that teachers and visitors have enough parking on site and to alleviate street parking pressures. The voices that supported the decrease in number of parking stalls asked for reassurance that the new facility has enough secure bike-parking spots as well as end-of-trip shower and secure bike facilities for teachers.

BOARDS WITH PUBLIC INPUT QUESTIONS - CONTINUED



9.2 PEDESTRIAN AND BIKE ACCESS

Question: "Where do you want to see access to the site: for bikes; for pedestrians?"

Green dots on the site plan indicate desired access points. The majority express their desire to have bike lanes leading to the site to improve bike safety, including bike routes to connect to other schools in vicinity. Respondents noted that the lack of safe bike routes to the school deters the student and staff from commuting by bike.

10.0 SITE AMENITIES

Question: "What site amenities would you like the school district to prioritize?"

The majority of respondents requested a new climbing structure, the retention of two sports fields, an outdoor classroom, outdoor gathering area, a gaga ball court, bike parking, and a basketball court. There was interest in covered and uncovered outdoor space for students. Although the prompting question did not ask about interior building amenities, there were answers that pointed to prioritizing the continuation of the shop program as well as music classes.



BOARDS WITH PUBLIC INPUT QUESTIONS - CONTINUED



11.0 ELEMENTS TO RETAIN

Question: *"What elements do you value the most and would like to see included in the new build? / What elements of the current building or site are most challenging?"*

Participants expressed a desire to retain the current music, shop and art programs, and to ensure the new build is suitably sized for them. Other features of the existing school that were identified by respondents were the stained glass panels, art work by former students, important trees, the flag pole and/or pole base (which may house a time capsule), and the two fields. Participants noted the main challenge for the existing school is lack of natural light.

12.0 ADDITIONAL COMMENTS

Question: *"What other ideas / needs should be considered when planning for the future CHMS?"*

Respondents noted a desire to retaining the current music and exploratory programs, and sufficient space for these activities. Participants also want to see a balance of open gathering spaces and quiet semi-enclosed spaces, a large library, and space for lunch and gathering. Others noted that the new build should act as a local hub where community can gather in designated spaces. Some expressed that the school should be designed as sustainable as possible with as much outdoor space and green areas as possible.



PARENT ADVISORY COUNCIL (PAC) COMMENTS:

The PAC leadership noted they were unable to attend the second open house and provided a letter in lieu. Their priorities include:

- Separated bikeways
- A new flashing crosswalk close to Garnet Road (NE corner of site)
- Improved safety and flow for drop-off /pick-up to be secure and connected with the school

The PAC letter is included as Appendix A.

APPENDICES

TABLE OF CONTENTS

- Appendix A** All Boards
- Appendix B** Boards with Sticky Note Comments
- Appendix C** Comment Cards
- Appendix D** PAC Letter

APPENDIX A

ALL BOARDS

TERRITORIAL ACKNOWLEDGMENT:

The Project Team wishes to acknowledge that Cedar Hill School is located in the traditional territories of the Esquimalt and Songhees Nations and we wish to express gratitude for the opportunity to work, learn, and share ideas on their traditional territories.



KMBR Architects Planners Inc. Acknowledgment:

KMBR Architects Planners Inc. is committed to the process of decolonization and reconciliation with First Nations and Urban Indigenous communities. We recognize that we live and work on the unceded territories of the Coast Salish Peoples including the x'məlk'əyəm (Musqueam), Sḵwəwə7meš (Squamish), and Seilwítlh (Tseil-Wautuh) Nations.

N
I

1.0 TERRITORIAL ACKNOWLEDGMENT

CEDAR HILL MIDDLE SCHOOL • GREATER VICTORIA SCHOOL DISTRICT #61 • MARCH 2022



Greater
VICTORIA
School District

KMBR ARCHITECTS PLANNERS

Existing Building

Current enrollment of 515 students

H-1 seismic rating = highest priority

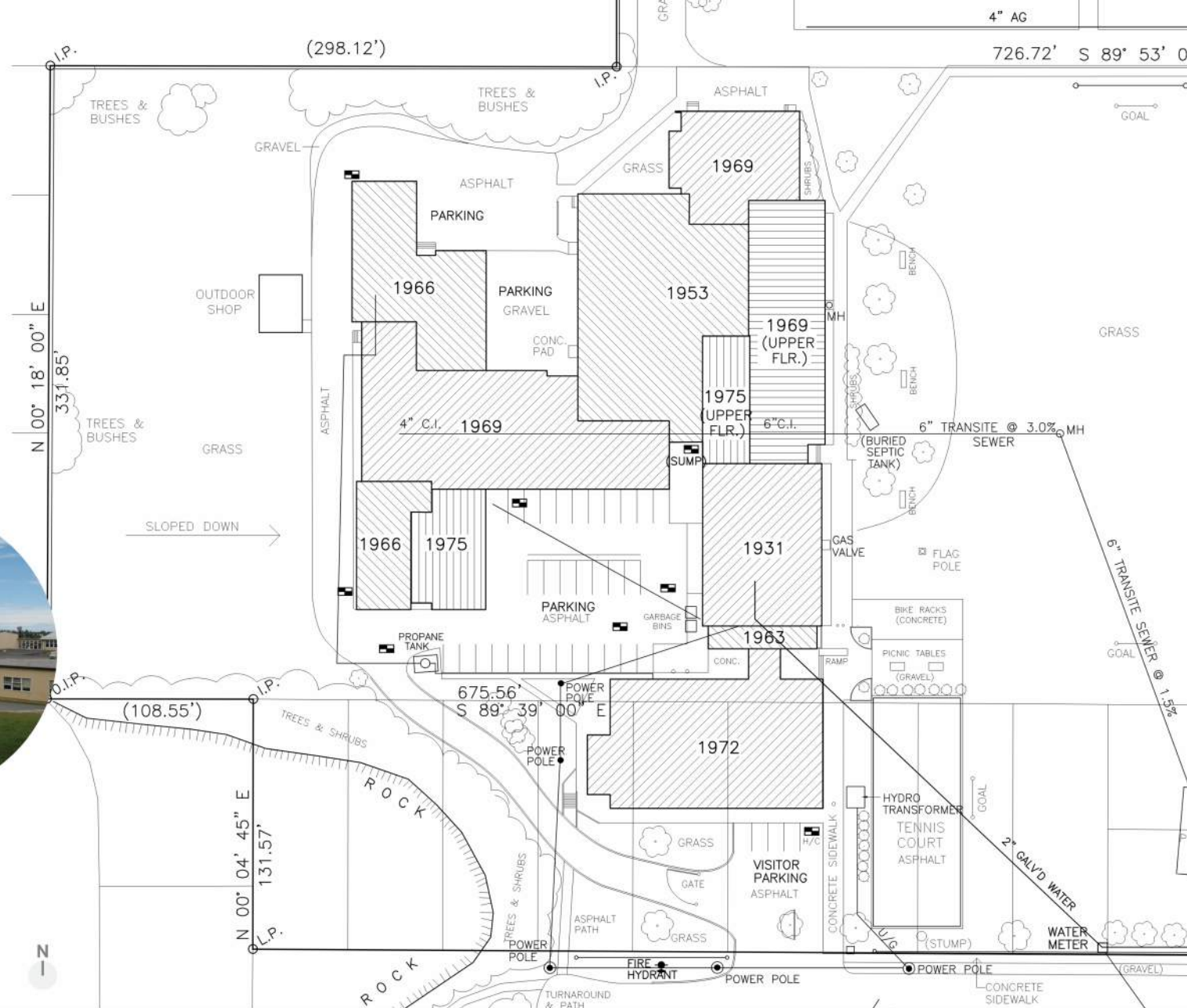
Built 1931 with multiple renovations and additions between 1953 and 1975

2017 - Building Conditions Assessment found it did not meet current seismic code and other building code requirements

2019 - Project Definition Report (PDR) to the Ministry of Education

2020 - Funding from the Ministry of Education for full-seismic replacement

2021 - Board approves additional funding for Net Zero Energy by Design.



2.0 SCHOOL BACKGROUND INFO

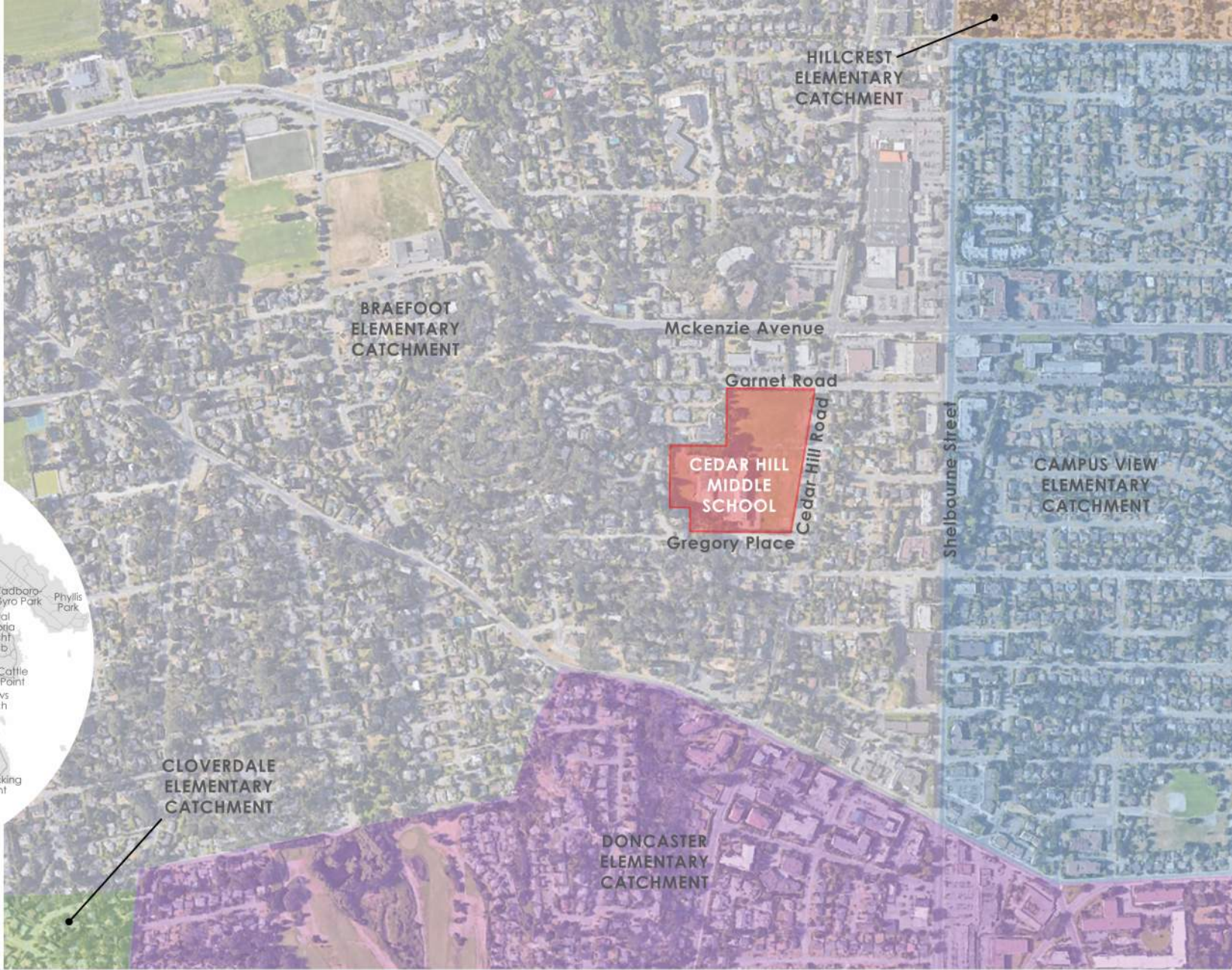
CEDAR HILL MIDDLE SCHOOL • GREATER VICTORIA SCHOOL DISTRICT #61 • MARCH 2022

Enrollment Projections

Current enrollment 515 students

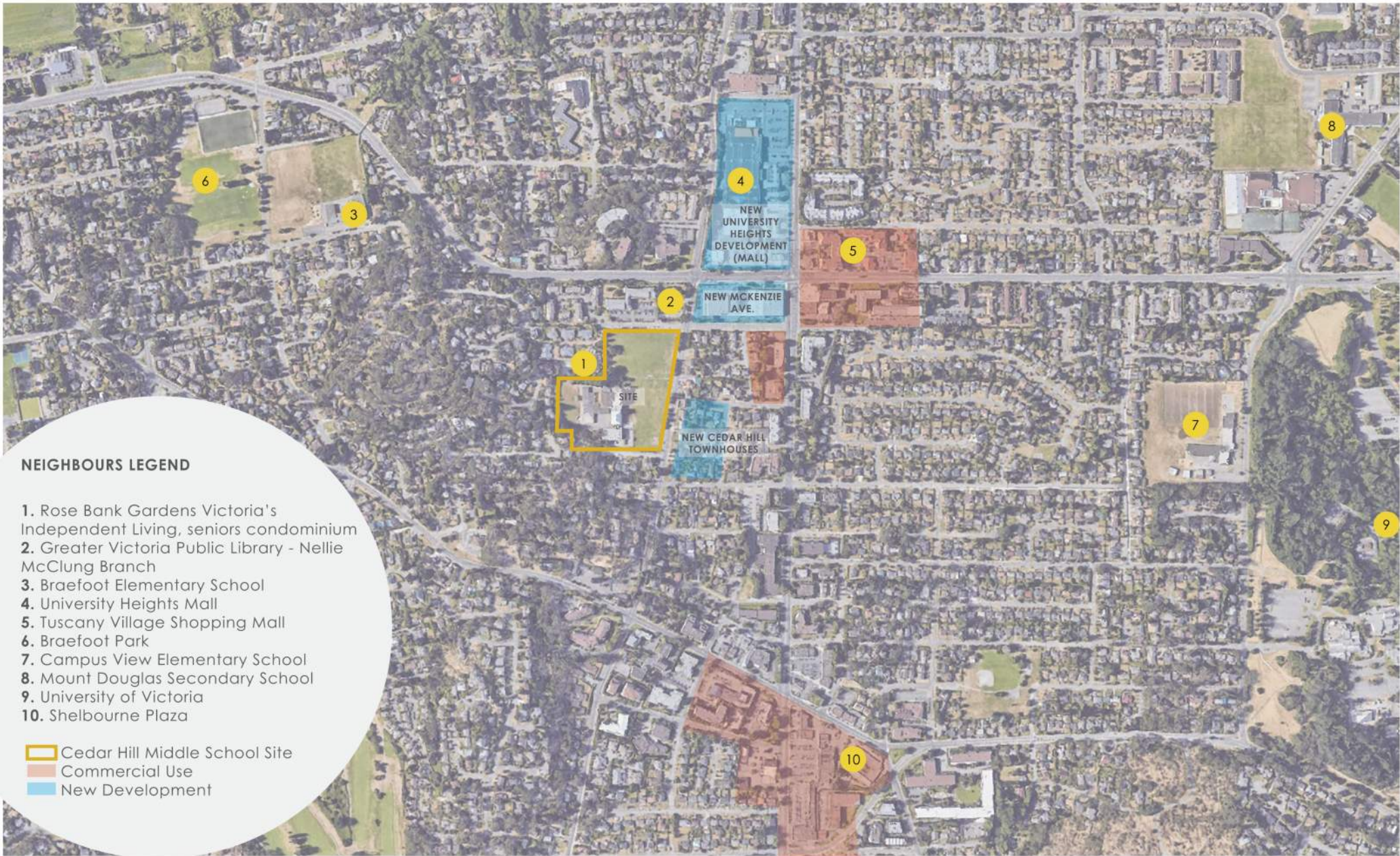
Replacement School 575 students

Future expansion for up to 5 classrooms (125 students)



3.1 ENROLLMENT + PROJECTIONS

CEDAR HILL MIDDLE SCHOOL • GREATER VICTORIA SCHOOL DISTRICT #61 • MARCH 2022



NEIGHBOURS LEGEND

- 1. Rose Bank Gardens Victoria's Independent Living, seniors condominium
- 2. Greater Victoria Public Library - Nellie McClung Branch
- 3. Braefoot Elementary School
- 4. University Heights Mall
- 5. Tuscany Village Shopping Mall
- 6. Braefoot Park
- 7. Campus View Elementary School
- 8. Mount Douglas Secondary School
- 9. University of Victoria
- 10. Shelbourne Plaza

-  Cedar Hill Middle School Site
-  Commercial Use
-  New Development

3.2 NEIGHBOURS

COMMUNITY ENGAGEMENT SCHEDULE



Description

Date

Status

Visioning	Tours of Existing Middle Schools	October 2021	✓
	Steering Committee Visioning Session	October 22, 2021	✓
	Staff Visioning Session	October 28, 2021	✓
	Student Visioning Sessions	November 2021	✓
	Feeder School Student Visioning Sessions	November 2021	✓
	Public Information Session #1	November 9, 2021	✓
	Online Survey for Parents, PAC, Neighbourhood	November 9-26, 2021	✓
Programming	Consultation with Songhees and Esquimalt Nations	Ongoing	✓
	Steering Committee Programming Workshop	December 6, 2021	✓
	Consultation with Rose Bank Gardens Living	Mid December, 2021	✓
	Programming Workshops with School Staff	December 8, 2021	✓
	Final Programming Workshop with steering committee	December 14, 2021	✓
Schematic Design	Schematic Design W/shop #1 - Steering committee	December 6, 2021	✓
	Schematic Design W/shop #2 - Steering Committee	January 7, 2022	✓
	Schematic Design Workshop #3 + #4 - Staff	January 13 + 14, 2022	✓
	Public Open House #2	March 3, 2022	
	Schematic Design Final Review & Acceptance	End March, 2022	
Design Development	Cedar Hill Stakeholder Design Development Workshop #1	March 28 - 31, 2022 TBC	
	Cedar Hill Stakeholder Design Development Workshop #2	March 28 - 31, 2022 TBC	
	Cedar Hill Stakeholder Design Development Workshop #3	April 1-7, 2022 TBC	
	Cedar Hill Stakeholder Design Development Workshop #4	April 1-7, 2022 TBC	
	Public Open House #3	May 28, 2022 TBC	
	Approval to proceed to Construction Doc. Phase	June 1, 2022	



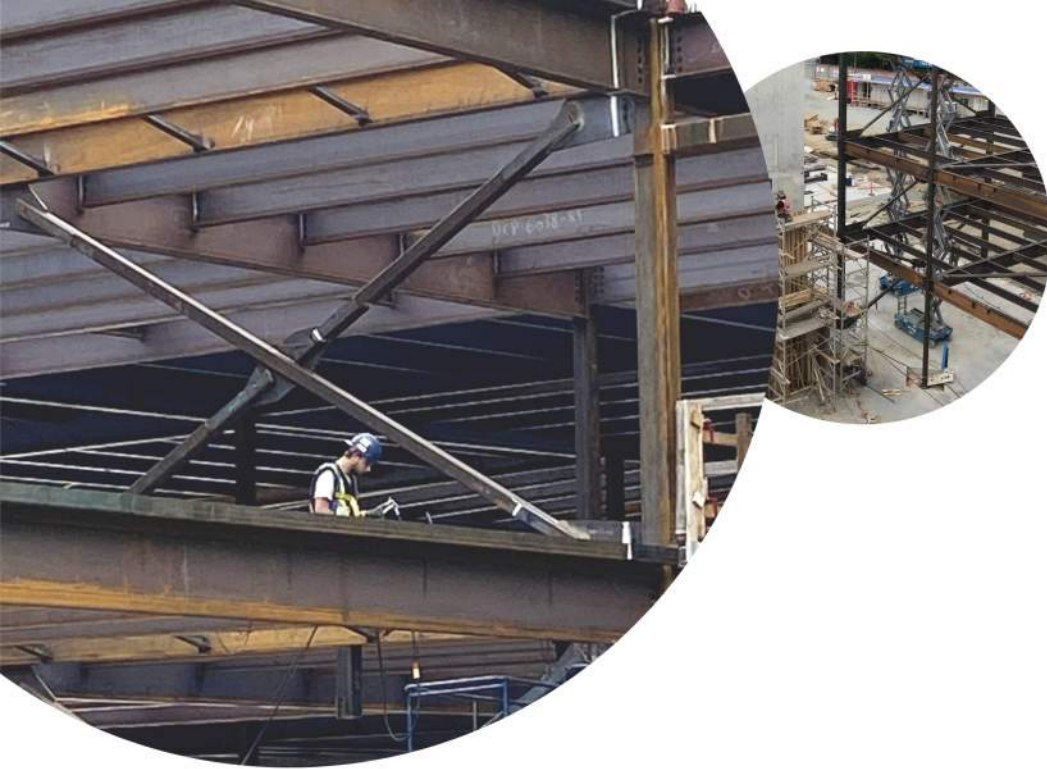
4.1 PROJECT TIMELINE

CEDAR HILL MIDDLE SCHOOL • GREATER VICTORIA SCHOOL DISTRICT #61 • MARCH 2022



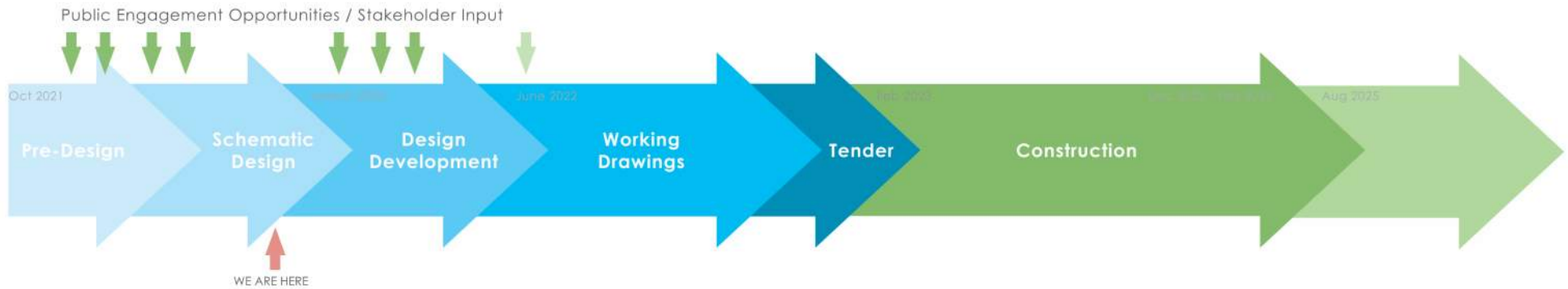
Greater
VICTORIA
School District

KMBA ARCHITECTS PLANNERS



PROJECT SCHEDULE

PHASE	TIMELINE
Pre-design: Visioning + Programming	October - December 2021
First Public Information Meeting	November 9, 2021
Schematic Design Phase	January 2 - March 11, 2022
Second Public Information Meeting	March 3, 2022 - TODAY
Design Development Phase	March 14 - May 29, 2022
Third Public Information Meeting	May 28, 2022. TBC
Working Drawing Phase	June 1 - November 20, 2022
Building Permit Submission	August 24, 2022
Ministerial Approval	November 30, 2022
Tender	December 2022 - January 2023
Construction Phase (20 months)	February 2023 - August 2025



4.2 PROJECT TIMELINE

CEDAR HILL MIDDLE SCHOOL • GREATER VICTORIA SCHOOL DISTRICT #61 • MARCH 2022



Greater VICTORIA School District

KMBA ARCHITECTS PLANNERS



Key Themes

- Throughout the workshops, conversations, and surveys, six themes became evident:
- Access to nature;
 - The importance of long-term environmental sustainability;
 - The need for flexible and adaptable facilities that reflect current ways of learning and teaching;
 - The desire for comfortable, welcoming spaces;
 - The importance of outdoor play, outdoor education, and physical activity (including hands on outdoor learning + covered areas for inclement weather);
 - The importance of maintaining a wide variety of learning options for students to explore (Music, Drama, Visual Arts, Tech, Education/Shop, Textiles, Culinary Arts, and STEM).



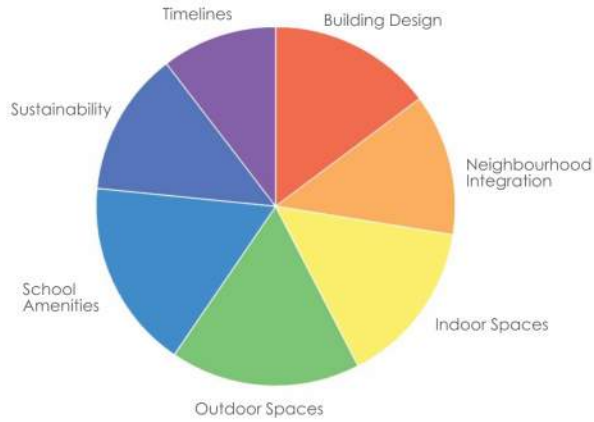
Design Drivers

During the Visioning Process, a number of themes began to emerge. These themes or high-level design goals serve as "design drivers" that steer the design in the coming months.

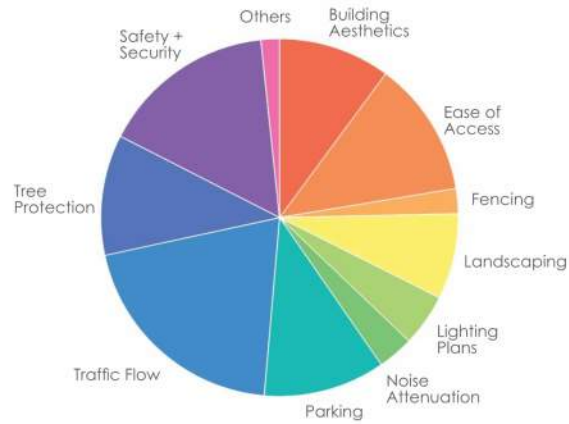


5.1 WHAT WE HEARD

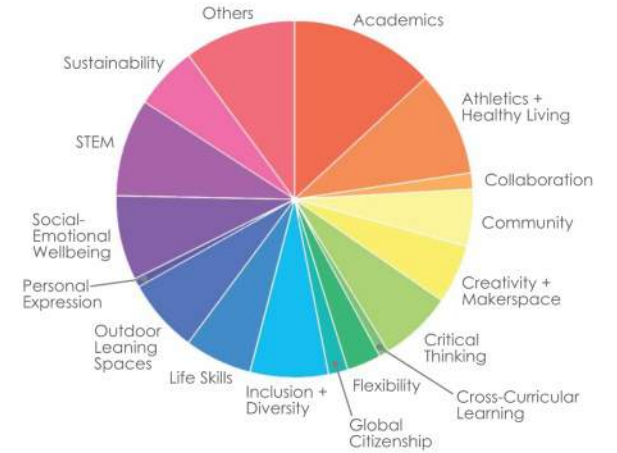
Design + Programming Interests



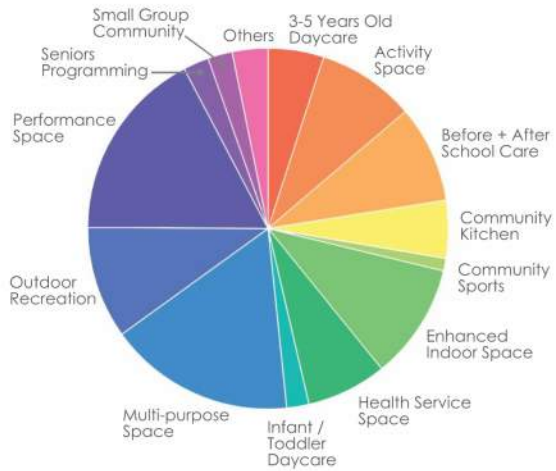
Impact to Surrounding Area Considerations



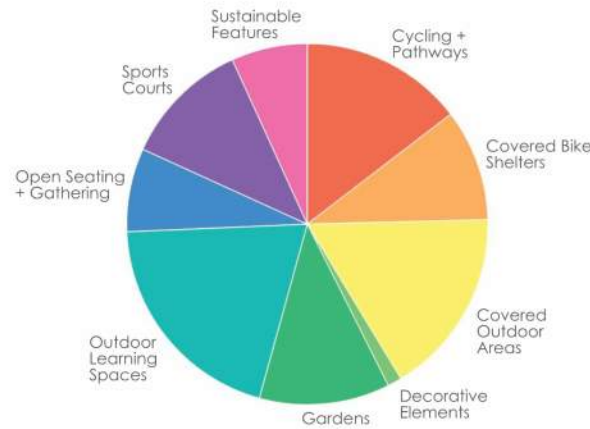
Learning Objectives / Themes



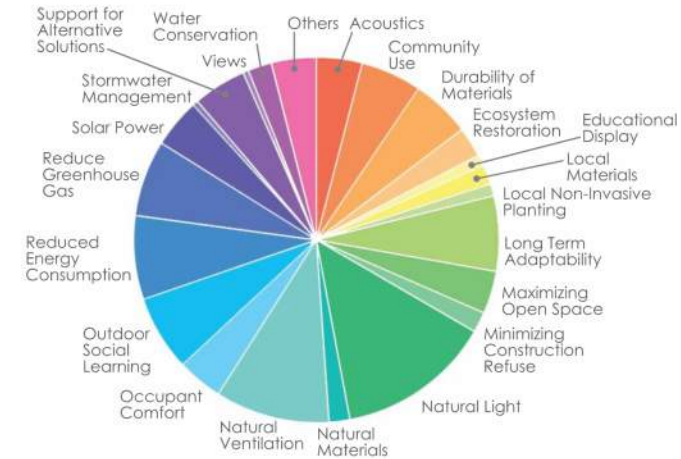
NLC Priorities



Outdoor Features



Sustainable Priorities



From November 9, 2021 Public Survey, 367 Respondents.

5.2 WHAT WE HEARD

CEDAR HILL MIDDLE SCHOOL • GREATER VICTORIA SCHOOL DISTRICT #61 • MARCH 2022

Design Features:

- 575 students
- 64 parking stalls
- accessible parking
- 3 electric vehicle parking
- 6 Secure Bike Parking
- 72 non-secure bike parking
- 2 storey with ample daylight
- built to current accessibility standards
- spaces that better support contemporary, student-centric learning
- sustainable building design - designed for Net Zero Energy with solar panels and air-to-air and/or ground-source heat exchange

GREEN SPACE ADJACENT TO NEIGHBOURS

ENERGY EFFICIENT BUILDING DESIGN

POTENTIAL GEOTHERMAL FIELD UNDER NEW PLAYFIELD LOCATED ON EXISTING SCHOOL FOOTPRINT

STEEP BLUFF (NO CONSTRUCTION)

RETAIN ARBUTUS

GARNET ROAD

RETAIN EXISTING NORTH FIELD DURING CONSTRUCTION, IF POSSIBLE

PATHS AND CONNECTIONS

RETAIN AS MANY EXISTING TREES AS POSSIBLE

SOLAR PANELS INSTALLED ON 2-STOREY ROOF

MAIN ENTRY POINT VISIBLE FROM GREGORY ROAD AND CEDAR HILL ROAD

KEEP EXISTING DRIVEWAY LOCATION (LAY DOWN AREA DURING CONSTRUCTION)

LAY DOWN AREA DURING CONSTRUCTION

POSSIBLE SECOND DRIVEWAY TO EASE TRAFFIC FLOW

N

GREGORY PLACE

CEDAR HILL ROAD






6.0 PRELIMINARY PROPOSED DESIGN

CEDAR HILL MIDDLE SCHOOL • GREATER VICTORIA SCHOOL DISTRICT #61 • MARCH 2022

DESIGN INTENT IS TO RETAIN TREES WHERE POSSIBLE. SOME TREES WILL BE REMOVED FOR DRIVEWAY AND BUILDING ENTRIES, AND SOME FOR FIELD #2



LEGEND

-  Removed trees
-  Retained trees
-  New trees
-  Retained Shrubs
-  Bluff (Trees and Shrubs)



7.0 TREES

QUESTION: DO YOU SUPPORT ADDING
A SECOND DRIVEWAY TO IMPROVE
VEHICULAR CIRCULATION?

place sticky notes here



8.1 VEHICLE CIRCULATION

CEDAR HILL MIDDLE SCHOOL • GREATER VICTORIA SCHOOL DISTRICT #61 • MARCH 2022

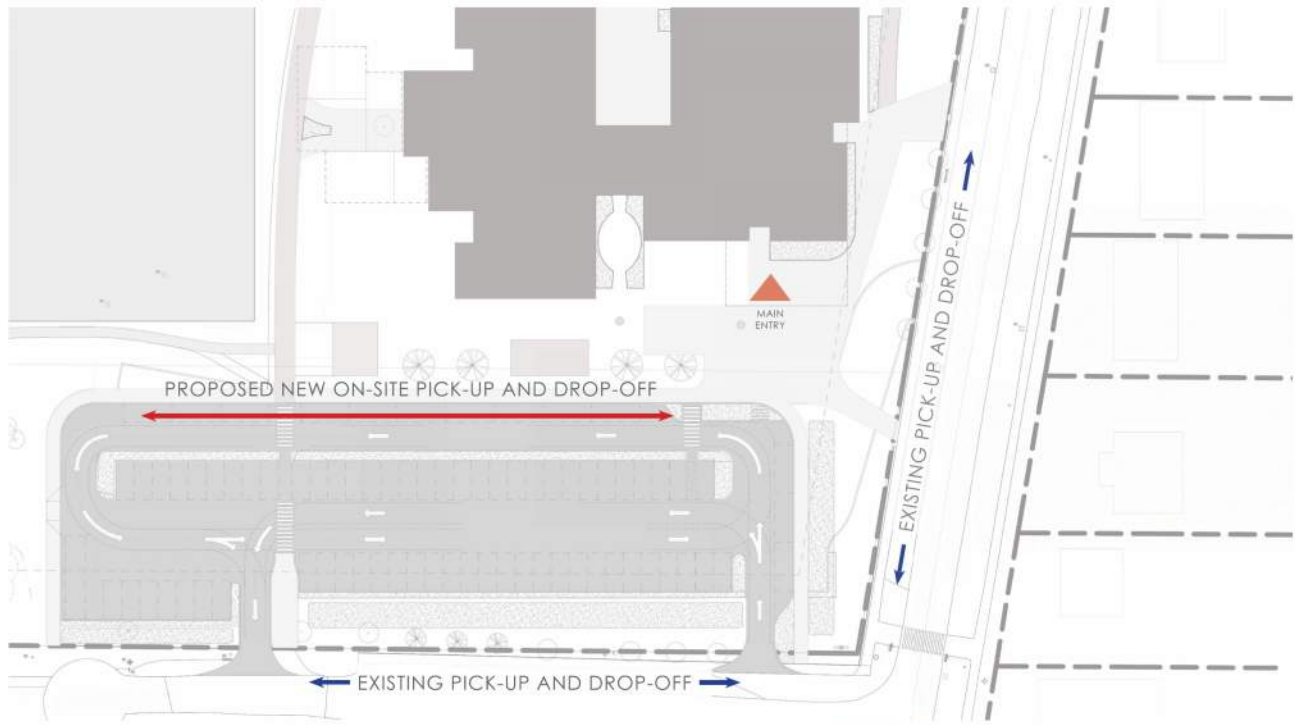


Greater
VICTORIA
School District

KMBA ARCHITECTS PLANNERS

QUESTION: DO YOU SUPPORT ADDING
ONSITE PICK-UP AND DROP-OFF IN
ADDITION TO THE EXISTING PICK-UP AND
DROP-OFF ON THE STREET?

place sticky notes here



Cedar Hill Road



Gregory Place

8.2 PICK-UP AND DROP-OFF OPTIONS

CEDAR HILL MIDDLE SCHOOL • GREATER VICTORIA SCHOOL DISTRICT #61 • MARCH 2022



Greater
VICTORIA
School District

KMBA ARCHITECTS PLANNERS

The Municipality has indicated that the site has good access to walking and cycling paths, and public transit. They support a reduction in the number of parking stalls to free up more green space on site. The Parking Bylaw requires between 61 and 64 stalls.

Question:

Would you support reducing the number of parking stalls on site by up to 15% to free up more green space on site?

place sticky notes here



OPTION 1: ±64 PARKING STALLS



OPTION 2: 54 PARKING STALLS (REDUCE BY 15%)

8.3 REDUCED PARKING OPTION

QUESTION: WHERE DO YOU WANT TO SEE ACCESS TO THE SITE:

- FOR BIKES?
- FOR PEDESTRIANS?

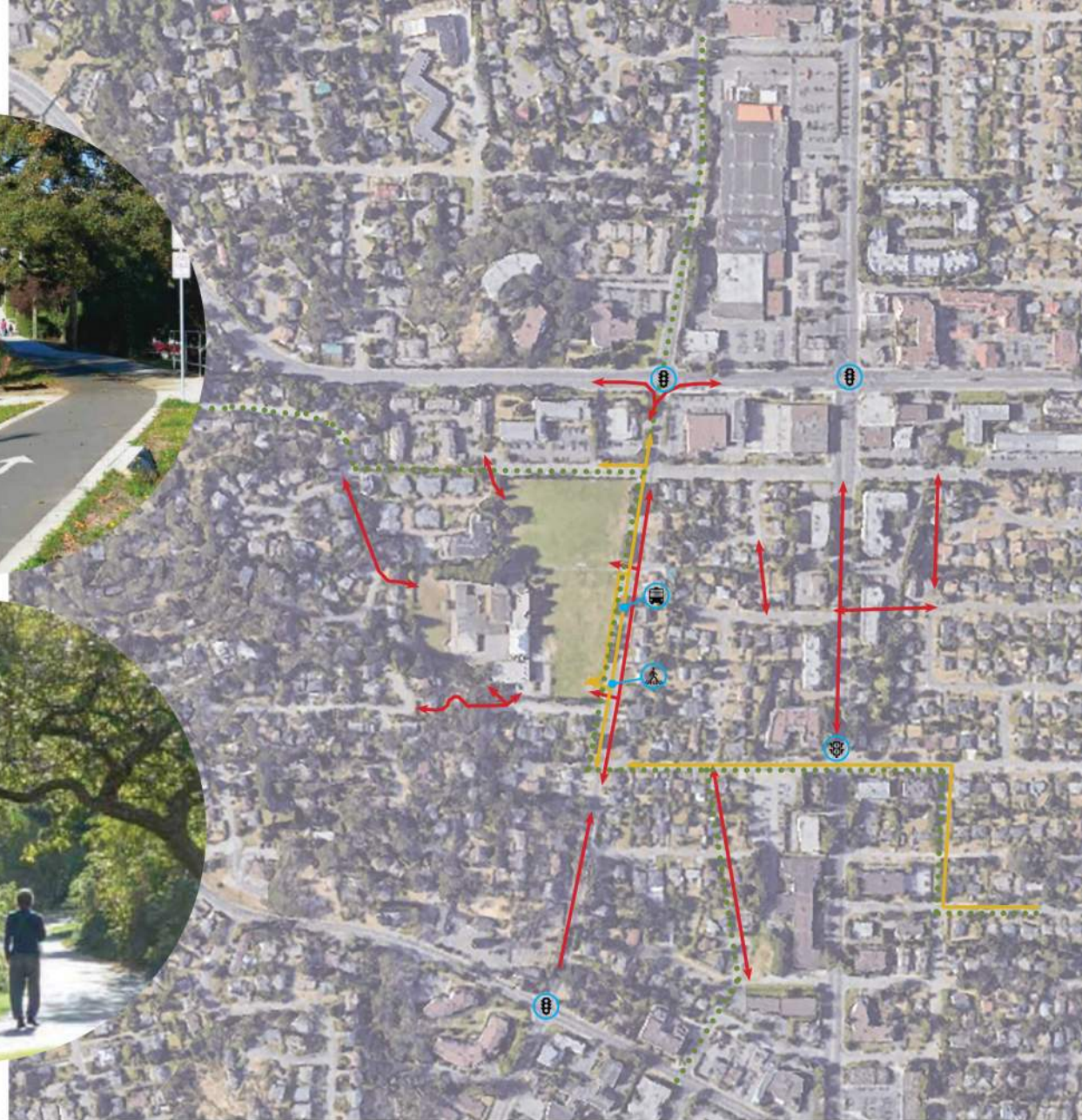


place sticky notes on adjacent board



LEGEND

- Bus stop
- Traffic signal
- Controlled crossings
- Pedestrian signal
- Pedestrian connectivity
- Cycling connectivity
- Greenway



9.1 PEDESTRIAN AND BIKE ACCESS

CEDAR HILL MIDDLE SCHOOL • GREATER VICTORIA SCHOOL DISTRICT #61 • MARCH 2022

QUESTION: WHERE DO YOU WANT TO SEE

ACCESS TO THE SITE:

- FOR BIKES?

- FOR PEDESTRIANS?

place sticky notes on the board without covering the site



9.2 PEDESTRIAN AND BIKE ACCESS (NOTES)

CEDAR HILL MIDDLE SCHOOL • GREATER VICTORIA SCHOOL DISTRICT #61 • MARCH 2022



Greater
VICTORIA
School District

KMBA ARCHITECTS PLANNERS

Question:

What site amenities would you like the school district to prioritize?

place sticky notes here

Legend

- | | |
|---------------------------------|--------------------------------|
| 1 Field 1 | 7 Secure Bike Storage |
| 2 Field 2 - Proposed Geothermal | 8 Non-Secure Bike Storage |
| 3 New Climbling Structure | 9 Entrance Courtyard |
| 4 Basketball + Tennis Courts | 10 Garbage Enclosure |
| 5 Gaga Ball | 11 Outdoor Seating / Classroom |
| 6 Outdoor Courtyard | 12 Existing Storage Enclosure |



10.0 SITE AMENITIES

CEDAR HILL MIDDLE SCHOOL • GREATER VICTORIA SCHOOL DISTRICT #61 • MARCH 2022

Questions:

What elements do you value the most and would like to see included in the new build?

What elements of the current building or site are most challenging?

place sticky notes here



11.0 ELEMENTS TO RETAIN

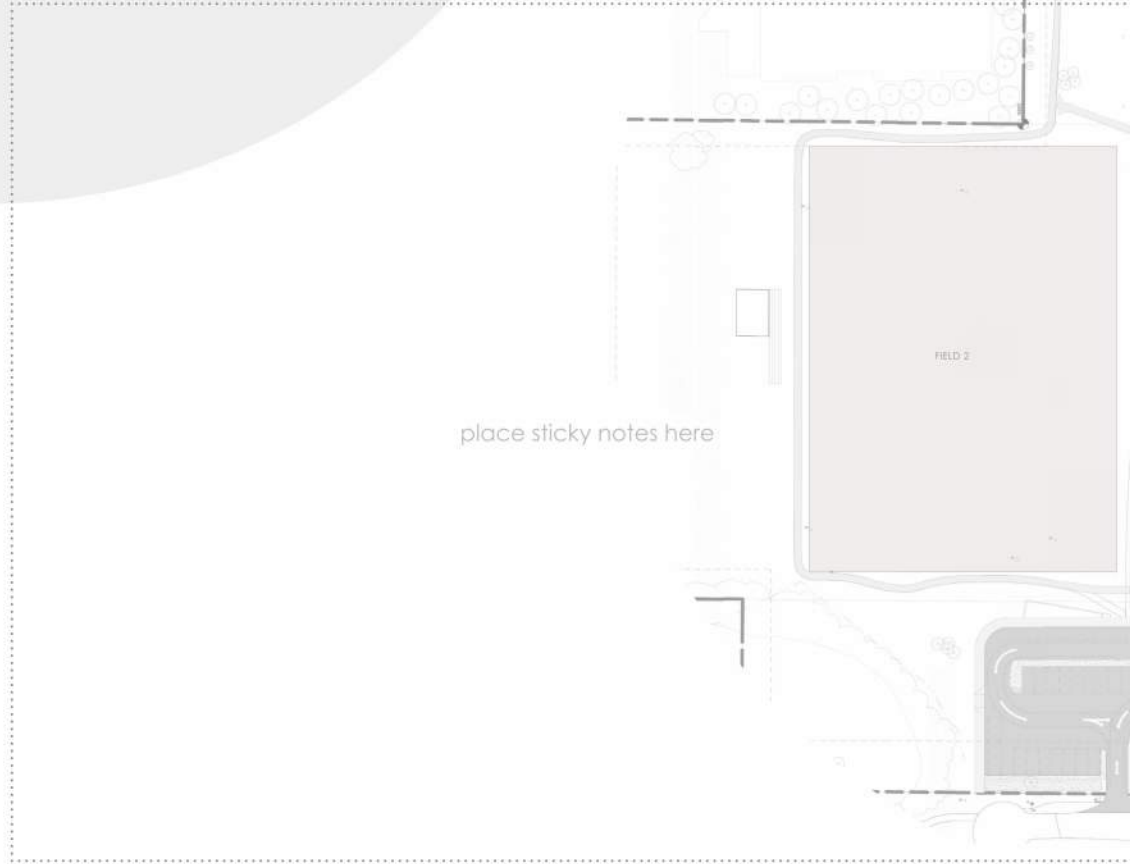
CEDAR HILL MIDDLE SCHOOL • GREATER VICTORIA SCHOOL DISTRICT #61 • MARCH 2022



Greater VICTORIA School District

KMBA ARCHITECTS PLANNERS

QUESTION: WHAT OTHER IDEAS/
NEEDS SHOULD BE CONSIDERED
WHEN PLANNING FOR THE
FUTURE OF CEDAR HILL MIDDLE
SCHOOL?



12.0 ADDITIONAL COMMENTS

CEDAR HILL MIDDLE SCHOOL • GREATER VICTORIA SCHOOL DISTRICT #61 • MARCH 2022



Greater
VICTORIA
School District

KMBA ARCHITECTS PLANNERS

APPENDIX B

BOARDS WITH STICKY NOTE COMMENTS

QUESTION: DO YOU SUPPORT ADDING A SECOND DRIVEWAY TO IMPROVE VEHICULAR CIRCULATION?

Yes to 2nd driveway

Please ensure traffic calmer measures like narrowed roads are added...

Yes 😊

Yes to driveway 2

Yes, you need a second driveway or the road will completely back up.
Agree 100%

Wondering about a traffic light @ Gregory Pl. and Cedar Hill Road

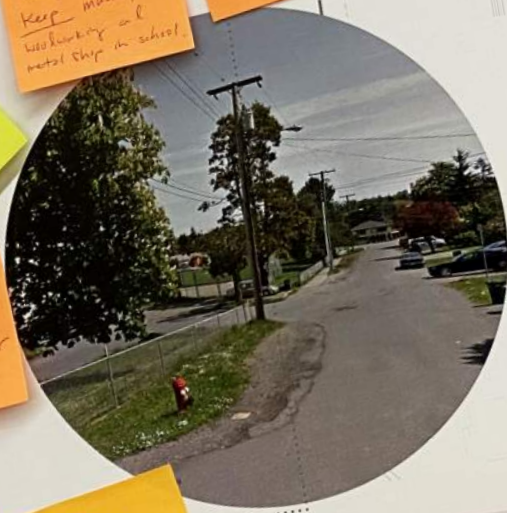
No - I would prefer to see money spent to keep music, woodworking and metal shops in school

YES Second drive-way

place st...
Yes to second driveway

Yes to second driveway

Yes to second driveway, Cedar Hill Light at Gregory + Cedar Hill?



Yes to 2nd driveway

Yes

Yes to second driveway

Second Driveway?
Yes
Need to upgrade Gregory/Cedar Hill Intersection

Do the loop
Right on CH Rd

Yes to 2nd driveway



Park Here LOOP

Nightmare on Gregory Pl!



QUESTION: DO YOU SUPPORT ADDING ONSITE PICK-UP AND DROP-OFF IN ADDITION TO THE EXISTING PICK-UP AND DROP-OFF ON THE STREET?



I think that a drop off zone is important because the parents of Gregs don't want to wait.

This current plan is going to create congestion on Gregory and backing through the drop off turning left off Gregory is a nightmare!

Yes A traffic light would be needed to help with huge congestion on Gregory at busy times

Encourage walking/ biking/ busing to decrease congestion. Middle school students mostly can get to and from independently.

Full traffic light would be needed at Gregory to make this work.

Yes, we need dedicated road pick up/ drop off that parents will use efficiently!

Yes to a dedicated pick-up/drop-off zone on the street.

No. Save money to put towards student program spaces, music studio, shop space.

No - we should be encouraging students to walk or bike to school instead of crowding more cars onto the street.

Parents should not be allowed to stop on Gregory - must use on site drop off to increase flow (parents need to time into Cedar Hill)

Existing Gregory at drop-off or pick-up time is a nightmare. Traffic lights on Cedar Hill/Gregory would be needed to have so much traffic on Gregory.

Traffic calming, signage needed, school zone painted on pavement.

Active travel should be promoted rather than car use.

Yes, the current street pick up & drop off is unsafe for cyclists on Cedar Hill road.

Should be encouraging the kids to walk or bike.

Secondary drop off is a trust! Current Gregory place drop off is hard to get off the street.

CONTROL LEFT TURN DURING PICK-UP & DROP-OFF



Cedar Hill Road



Gregory Place

8.2 PICK-UP AND DROP-OFF OPTIONS

CEDAR HILL MIDDLE SCHOOL • GREATER VICTORIA SCHOOL DISTRICT #61 • MARCH 2022

The Municipality has indicated that the site has good access to walking and cycling paths, and public transit. They support a reduction in the number of parking stalls to free up more green space on site. The Parking Bylaw requires between 61 and 64 stalls.

Question:

Would you support reducing the number of parking stalls on site by up to 15% to free up more green space on site?

#64 more stalls

Yes - if staff were offered bike parking and proper locker/shower facilities

yes!

Stalls
The spots will be needed in the street! And the main area space doesn't look like it would be

MORE EV CHARGERS

No - the school will be bigger ∴ more staff = more parking

64 stalls

No - we need parking for both staff and visitors. We currently feel the pressure of not having enough parking. Although there is parking on the street but the surrounding business use it for their staff and the houses use it.

I think the site needs more furniture and even if some remove it to the walkway bike access is said space

No reduction in parking spaces

64 stalls

Unfortunately, I think as many spaces as possible are needed due to staff numbers + visitors.

No, more parking needed often than are there in addition to staff parking. There is not enough as is

Not many full staff live close to schools teachers often have supplies to bring in/out so parking is necessary for staff

YES

Yes to give space for a reduction in parking up to 15%

we vote yes for option 2

54 should be ample

Yes in to option 2. 54 parking stalls is ample, especially on a street w/ public transit.

Yes! Need to encourage school transportation not car-centric



OPTION 1: ±64 PARKING STALLS



OPTION 2: 54 PARKING STALLS (REDUCE BY 15%)

QUESTION: WHERE DO YOU WANT TO SEE

ACCESS TO THE SITE:

- FOR BIKES?
- FOR PEDESTRIANS?

Raised
crosswalk!

As long as there
are bike lanes
to safely take
all the traffic

1. Controlled crossings
2. Pedestrian Signal
3. Bus Stop
4. Traffic signal
5. Overpass
6. Cycle mounted
7. Pedestrian mounted

there are
currently no
bike lanes.
we would
like bike
lanes!

If possible, please
expand sidewalk along
east side of Cedar Hill
Rd. Between Erleston
Ave and Cedar Hill
X Cross (X) road.

Cross walk
at mid-point
in front of
CHMS, or
at Garnet

place sticky notes
on board without
the

there is no safe
biking route along
cedar hill rd
between cedar hill xed
and mckenzie.
A light at Grayroad
cedar hill would allow
safer pedestrian
access

Bike lanes
safe route is
over Jans for Hill
- I can't even ride
up a straight like
that!

Make sure the
crosswalk incor-
porates a lane
for bikes
(eg. - Midgard &
Gordon Hand Rd.)

Bike lanes (Cedar
Hill)
would encourage
more kids
to bike

safer bike lanes
to encourage less
traffic entering
from Cedar Hill



Safe bike
access
from Mortner/
Cedar Hill area
to Braefoot
School via
Garnet

9.2 PEDESTRIAN AND BIKE ACCESS (NOTES)

CEDAR HILL MIDDLE SCHOOL • GREATER VICTORIA SCHOOL DISTRICT #61 • MARCH 2022

Questions:

What elements do you value the most and would like to see included in the new build?

What elements of the current building or site are most challenging?

Wood + Metal
 Keep - don't remove
 existing materials
 all from school
 (school)
 Planned Glass
 art projects

Keep the art done by
 students. It makes our
 school what it is. Keep
 explanations! Also, keep
 music space with the
 nice, natural light. LBS
 or windows

Keep music
 studio
 space
 equal to the
 present to
 accommodate the
 current # of music stude

We value band,
 orchestra, jazz,
 and choir!
 Strings!
 We value wood +
 metal shop. + I
 leaving those in site
 might control is no site
 SHOP SPACE + STUDIOS

We value
 music choir, strings band
 wood shop
 metal shop
 home or
 art rooms

- Stain Glass
 - Pictures of old
 School + New school
 construction.
 (See Pictures from
 Maple Leaf Gardens +
 New Structures)

- the 2 big fields
 are great and
 you'll keep use
 and have 2 big
 2nd one eventually
 - a good climbing
 structure!
 - stain glass

I think CH has a lot
 of artwork but of all
 of it the stained
 glass windows
 created by students
 over 20 years ago
 symbolize our
 school. I would like
 to see them in the
 new build.

TAXPAYER
 DOLLARS

Save the stain glass
 windows.
 Lily Wallace's
 legacy

Stained glass
 Memorial
 Trees

Basketball
 Courts
 +
 Truss

- Stain glass
 - flag pole

NATURAL LIGHT
 More windows
 of a glass atrium

Most challenging:
 Soaking, Slippy,
 Slops bad field

Lack of
 lighting
 around the
 school

Keeping music,
 We love, metal shop
 as they are now is
 extremely important +
 something I hope you
 will keep in the
 design.

Current historical
 art stain glass,
 legacy items
 - Frisbee golf!
 lots of evening
 swacked users.

Some old,
 save new
 - maybe one of
 each or
 multiples

INCLUDE:
 Art room +
 ceramics
 space
 Wood shop
 Metal shop



11.0 ELEMENTS TO RETAIN

CEDAR HILL MIDDLE SCHOOL • GREATER VICTORIA SCHOOL DISTRICT #61 • MARCH 2022

QUESTION: WHAT OTHER IDEAS/ NEEDS SHOULD BE CONSIDERED WHEN PLANNING FOR THE FUTURE OF CEDAR HILL MIDDLE SCHOOL?

Retain best stories + classic studio space
EQUAL SPACE TO NOW so no students are left out
High school is the life to have music in

Indoor + outdoor gathering spaces
Music studio
Stage
Cafeteria / metal shop

These spaces to allow to prepare students for future careers
Class + Theater + Studio

Making use of a world where technology and applied sciences are progressing at a rapid pace and people need the opportunity to learn from each other
to create new to have intergenerational interaction

possible community use paired w/ nearby library, this area becomes a hub.

Most values
- Zero carbon emissions
- Good play structure
- Use of fields
- open air

Community use during weather/ closing/ summer
lets not waste the space

A SPACE MULTIPURPOSE FOR LUNCH OR FOOD PROGRAM
LARGE KITCHEN PREP

Middle school need to explore outside of academics
keep a studio space for some - music, stage, band, choir, sketch, theater, wood + metal

Later cafeteria building
- connect to arts
- performance theater
- community theater
- performance studio space

STEM LAB / INNOVATOR SPACE

FIELD LIGHTS OFF AT TEN
LOW OVERNIGHT LIGHTING

Keep the same music spaces for all music programs (band, choir + strings)
keep the woodworking + metal shop program

CONNECTION FOR NAT. BUS CONNECTION FROM SCHOOL OVERPASS TO WHERE THE FEEDS WHERE CUTS ARE PROTECTIVE →

Key design to include music, band, shop, home economics, art, science lab

Potential fenced daycare space for age 3-5
free at oak bay High (addition) high school
high school + middle school

NIGHT TIME CONTROL OF PARKING LOT (GATES)

Retractable School care space for feeder elementary students. Supply does not meet demand at all
Add new space to provide school for feeder school care space

Adding a crosswalk @ Garnet St.

ACCESSIBILITY FOR THE DISABLED
- QUIET SPACES

Room for socialization - especially good for rainy days
Quiet spaces for alone time
outdoor learning spaces - garden

add weather board

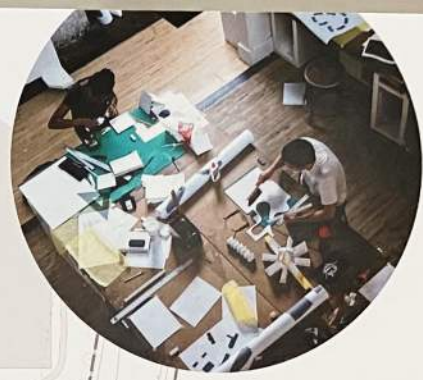
Vending machines
Future student for ADA

Making Friends
- Future student for 2027

Eco-Friendly

Quiet, safe connection areas

→ POTENTIAL FOR LIVE MUSIC ATTRACTION? REVENUE!



12.0 ADDITIONAL COMMENTS

CEDAR HILL MIDDLE SCHOOL • GREATER VICTORIA SCHOOL DISTRICT #61 • MAR 2024

Question:

What site amenities would you like the school district to prioritize?

By order of Priority
 #3 - Climbing Structure
 #8 - Non-secure bike Storage
 #5 - Gaga Ball
 #4 - Basketball + Tennis
 Tunnies (Practic ball?)

Please write
 #3
 #5
 #2
 #9
 #6

Legend

- 1 Field 1
- 2 Field 2 - Proposed Geothermal
- 3 New Climbing Structure
- 4 Basketball + Tennis Courts
- 5 Gaga Ball
- 6 Outdoor Courtyard
- 7 Secure Bike Storage
- 8 Non-Secure Bike Storage
- 9 Entrance Courtyard
- 10 Garbage Enclosure
- 11 Outdoor Seating / Classroom
- 12 Existing Storage Enclosure

Shop classes
 Basketball
 Priorities
 #3
 #5
 #11
 #2 + 1
 #7
 Covered outdoor areas
 😊

3, 4, 5, 6, 7, 11

5, 4, 3, 2, 1 - Kids need outdoor spaces to be physical in!

Climbing Structure
 Fields
 Outdoor classroom

2, 3, 6, 4, 5, 9
 Would love to see covered area for students!

11. Out door seating/classroom
 4. Basketball
 3. climbing structure
 5. Entrance
 7. Non-secure bike storage
 8. Secure bike storage
 9. Outdoor seating
 10. Garbage enclosure

Outline wood + metal shop = Lab
 Music room (s)!!
 Library
 Climbing structure
 outdoor covered classroom + activity

Make music and shop classes a priority!
 Keep money focused on student resources

Student spaces for
 applications
 Music, woodshop, metal shop
 Outdoor activity equipment
 Water, money on non student focused accessories

New Climbing Structure
 - monkey bars
 Outdoor classroom and natural play area

Shop classes
 - Bikes
 - Basketball Courts
 - fences without tops
 flat curyon

Shop class
 South facing outdoor space

4, 11, 5, 1, 2, 6
 Covered areas for kids to stand in the rain.

Paths must be wide enough for pedestrians and bikes
 topset to storage crates

Hot lunch program for all kids, or a space for one to happen later is cafeteria

#2 bits and bobs
 #3 of outdoor area
 #5 outdoor classroom is a great idea!



10.0 SITE AMENITIES

CEDAR HILL MIDDLE SCHOOL • GREATER VICTORIA SCHOOL DISTRICT #61 • MARCH 2022

APPENDIX C

COMMENT CARDS

QUESTION: WHAT OTHER IDEAS OR
COMMENTS WOULD YOU LIKE TO
SHARE WITH US TODAY?

I would like to see the classic
middle school areas retained

- music room (specific
for acoustics)
- wood shop / metal work
- library

I would like to see less
"wow" factor and innovative
design and more practical
use areas.



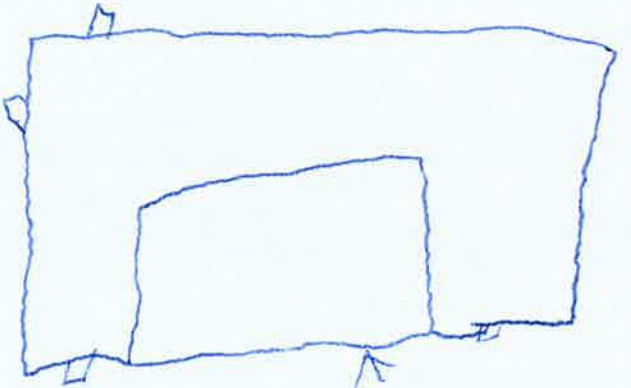
QUESTION: WHAT OTHER IDEAS OR COMMENTS WOULD YOU LIKE TO SHARE WITH US TODAY?

A major review of Gregory / Cedar Hill Road traffic needs to be done. Pick-up and drop-off on Gregory - getting in and out of Gregory during peak times is horrific.



QUESTION: WHAT OTHER IDEAS OR COMMENTS WOULD YOU LIKE TO SHARE WITH US TODAY?

Look of school



Flowers



QUESTION: WHAT OTHER IDEAS OR COMMENTS WOULD YOU LIKE TO SHARE WITH US TODAY?

I think that all the exploratories especially Shop and Drama should have dedicated spaces and that all sports teams should be available for students. I am a student and I know for a fact that all students ~~should~~ enjoy Shop and Drama and we learn a ton of new skills.



QUESTION: WHAT OTHER IDEAS OR COMMENTS WOULD YOU LIKE TO SHARE WITH US TODAY?

Drop off + Pick up

Drop off + Pick up Looks good
BUT How is it Helping cars turning left + right onto CEDAR HILL when it is AT A STAND STILL.
People Park for pick up on CEDAR HILL RD. for MINIMUM HOURS AT A TIME just to get a spot for pick up. IN A.M. cars drop off along CEDAR HILL AS KIAS Dodge traffic to cross or cars then DO U-TURNS to get back onto CEDAR HILL traffic flow which is ALREADY full due to spillage from STEELBARNE corridor project.

Maybe PAVE the section on CEDAR HILL + make parking spots



QUESTION: WHAT OTHER IDEAS OR COMMENTS WOULD YOU LIKE TO SHARE WITH US TODAY?

At the moment 1 small sign at
mostimer + 1 small sign at
garnett

* There needs to be BETTER *
SCHOOL ZONE SIGNAGE.

ex. DANCASTER SCHOOL

ex. ~~LAKEHILL~~ LAKEHILL SCHOOL

* FLASHING LIGHTS *

* PAINTED ROADS *

TRAFFIC CALMING MEASURES



QUESTION: WHAT OTHER IDEAS OR COMMENTS WOULD YOU LIKE TO SHARE WITH US TODAY?

- please have good indoor / outdoor gathering spaces for socializing or class gatherings
- space for the music department with sound proofing
- area for trades - woodturning / metal shop
- would prefer entrance at the front of the school ^{man}
- Concern drop off zone off Gregory as we are already not permitted in that street + I anticipate the

neighborhoods
the street is also very
small to sustain all the traffic.



will be upset



QUESTION: WHAT OTHER IDEAS OR
COMMENTS WOULD YOU LIKE TO
SHARE WITH US TODAY?

The current plan could be flipped, moving the common area / b.b. court / gaga ball court to the front of the school. Where it currently sits it is hidden - this is a problem (unless you have video surveillance).

→ A big YES to the path around the perimeter of the property - so great for the students, staff and community. I hope it is paved ~~is~~ so that our elderly community members



feel comfortable using it.



QUESTION: WHAT OTHER IDEAS OR COMMENTS WOULD YOU LIKE TO SHARE WITH US TODAY?

I think the parking should be on the front of the school. Staff parking should be separate from pick up / drop off. We have staff, especially EA's, who leave to go to a second job at the bell and they won't be able to leave because of the congestion from the parents.



QUESTION: WHAT OTHER IDEAS OR
COMMENTS WOULD YOU LIKE TO
SHARE WITH US TODAY?

On hill in the back, could this have benches of some sort placed in the hill for outdoor class room? (on a slope) Seems like such a waste of space.

- Parking, in past, residents of Gregory have complained about parent parking on that street.

There must be other parking for parents. The parking along Cedar Hill needs to stay.

The proposed arrangement will cause a complete traffic ~~jam~~^{jam} on Gregory. Staff will be trapped in and likely there will be a back-log



- Concern will be saying school is for 575 when approved # is less than. This amount of spots available on enrollment of the new building needs to be shown to the community.

* ~~Shops~~ -

- Area of play space, basketball court needs to be more visible to the public - perhaps on the other side of the school.

QUESTION: WHAT OTHER IDEAS OR
COMMENTS WOULD YOU LIKE TO
SHARE WITH US TODAY?

KANGAROO Swimming Pool



QUESTION: WHAT OTHER IDEAS OR COMMENTS WOULD YOU LIKE TO SHARE WITH US TODAY?

Keep the shops



QUESTION: WHAT OTHER IDEAS OR COMMENTS WOULD YOU LIKE TO SHARE WITH US TODAY?

Traffic flow + congestion on Cedar Hill Rd, Consider extra cross walk in front of school, bike lanes, separate traffic/drop off from Sidewalks



QUESTION: WHAT OTHER IDEAS OR
COMMENTS WOULD YOU LIKE TO
SHARE WITH US TODAY?

Please focus further design
on interior / classroom
design \Rightarrow include
consideration of music
space (choir, band),
performing arts, shop,
science + technology,
open learning + meeting
space



QUESTION: WHAT OTHER IDEAS OR COMMENTS WOULD YOU LIKE TO SHARE WITH US TODAY?

Would like to see the mockup of the new school. to get a better idea. Need more academies along with sports + lifestyle classes



QUESTION: WHAT OTHER IDEAS OR COMMENTS WOULD YOU LIKE TO SHARE WITH US TODAY?

Please keep the space for all of the music programs (band, strings, choir) that currently exist at Cedar Hill. And also keep the wood working + metal shop facilities so our kids have the same opportunities as other middle school kids in our district.



QUESTION: WHAT OTHER IDEAS OR COMMENTS WOULD YOU LIKE TO SHARE WITH US TODAY?

Consider putting a general shop into the space. Students need this early exposure to the trades to help support the desperate need for skilled workers.



QUESTION: WHAT OTHER IDEAS OR
COMMENTS WOULD YOU LIKE TO
SHARE WITH US TODAY?

Lobby government to not
mandate installation of gas
for back up just for a few
cold days. Today's heat
pumps can work to -20°C .
Keep pushing BC Hydro for
more solar.



QUESTION: WHAT OTHER IDEAS OR COMMENTS WOULD YOU LIKE TO SHARE WITH US TODAY?

My family is Indigenous.
Indigenous child DO
play strings, band instruments,
sing in the choir and
ARE GIFTED!



QUESTION: WHAT OTHER IDEAS OR COMMENTS WOULD YOU LIKE TO SHARE WITH US TODAY?

Music is critical.

If you want to keep kids in school, if you want to increase graduation rates → Have options for ALL students. Not all kids are academically or athletically minded. Middle schools NEED Music - strings, band AND choir, shop - metal, wood, Home EC - ALL these are of utmost importance.

Rooms need to be of an adequate size. !!



QUESTION: WHAT OTHER IDEAS OR
COMMENTS WOULD YOU LIKE TO
SHARE WITH US TODAY?

Keeping green
space for future
generations of a
growing population is
a priority. Selling
school land is so
short sighted. Our
students need better
government funding
and trustees
need to
advocate
for them.

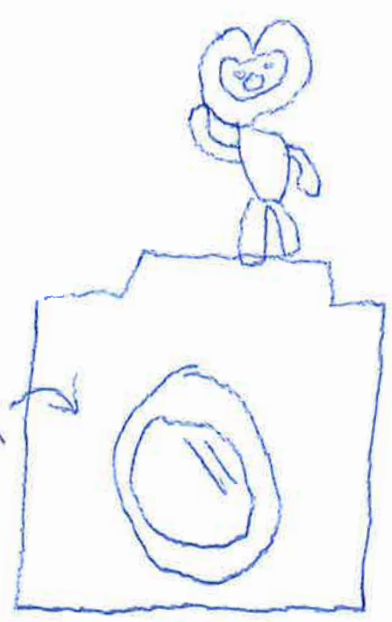


QUESTION: WHAT OTHER IDEAS OR COMMENTS WOULD YOU LIKE TO SHARE WITH US TODAY?

purple monthly dishwasher



This
is
PUPPET



QUESTION: WHAT OTHER IDEAS OR COMMENTS WOULD YOU LIKE TO SHARE WITH US TODAY?

My family supports retaining enough studio space to support ALL choirs, bands, and strings programs. Music should be a CORE SUBJECT.

Band, and music are the ambassadors of a quality school. Listen to your families + students

CUT
AWAY
FROM
STUDENT
PROGRAMS.



APPENDIX D

PAC LETTER

From the Cedar Hill Middle School Parent Advisory Council President:

March 10, 2022

Dear Maryanne Trofimuk:

I am writing to you on behalf of the Cedar Hill Middle School PAC as part of our ongoing school safety promotion. The request is that the new school planning committee work in conjunction with the Saanich Engineering Department. In doing so, we can ensure that the active and safe routes to school be strengthened as part of the new school design. Transportation concerns relating to the school were identified in the CRD Active and Safe Routes to School program in 2016 and have yet to be resolved.

Some examples of where the planning committee and engineering department could work together are:

- 1) Developing bike lanes to encourage safe riding that does not involve sidewalk, walkways or road usage and that lead to bike parking at the school;
- 2) Implementing a flashing crosswalk close to Garnet that meets up with the gate and walking and bike pathways that students enter and exit from to decrease jaywalking; and
- 3) That parent pull-over pickup spots be filled, paved, and marked to maximize space- and to extend sidewalks by building parallel and conjoined pathways on the school grounds (currently there are potholes in pull-off areas decreasing use of the space and a narrow sidewalk that does not allow for safe walking between cars and pedestrians).

The partnership between you and the Saanich Engineering Department is a great opportunity to meet the above identified needs. Matching school design and function with that of the neighbourhood makes sense for cohesion and safety.

Mrs. Trofimuk, we are asking that you please bring forward our request to the Cedar Hill new school planning committee before plans finalize. Thank you for your attention and consideration to this matter.

Sincerely,

Morgan Fankboner

Cedar Hill PAC President

DESIGNING FOR HUMAN POTENTIAL.



KMBR | ARCHITECTS
PLANNERS

300 – 152 West Hastings Street
Vancouver BC, V6B 1G8

Primary Contact:
Kate Lemon, Principal
klemon@kmb.com
(604) 732-3361
www.kmb.com