

TERRITORIAL ACKNOWLEDGMENT:

The Project Team wishes to acknowledge that Cedar Hill School is located in the traditional territories of the Esquimalt and Songhees Nations and we wish to express gratitude for the opportunity to work, learn, and share ideas on their traditional territories.



KMBR Architects Planners Inc. Acknowledgment:

KMBR Architects Planners Inc. is committed to the process of decolonization, and reconciliation with First Nations and Urban Indigenous communities. We recognize that we live and work on the unceded territories of the Coast Salish Peoples including the xʷməθkʷəy̓əm (Musqueam), Skwxwú7mesh (Squamish), and Seilwitulh (Tseil-Waututh) Nations.

N
I

1.0 TERRITORIAL ACKNOWLEDGMENT

CEDAR HILL MIDDLE SCHOOL • GREATER VICTORIA SCHOOL DISTRICT #61 • MARCH 2022

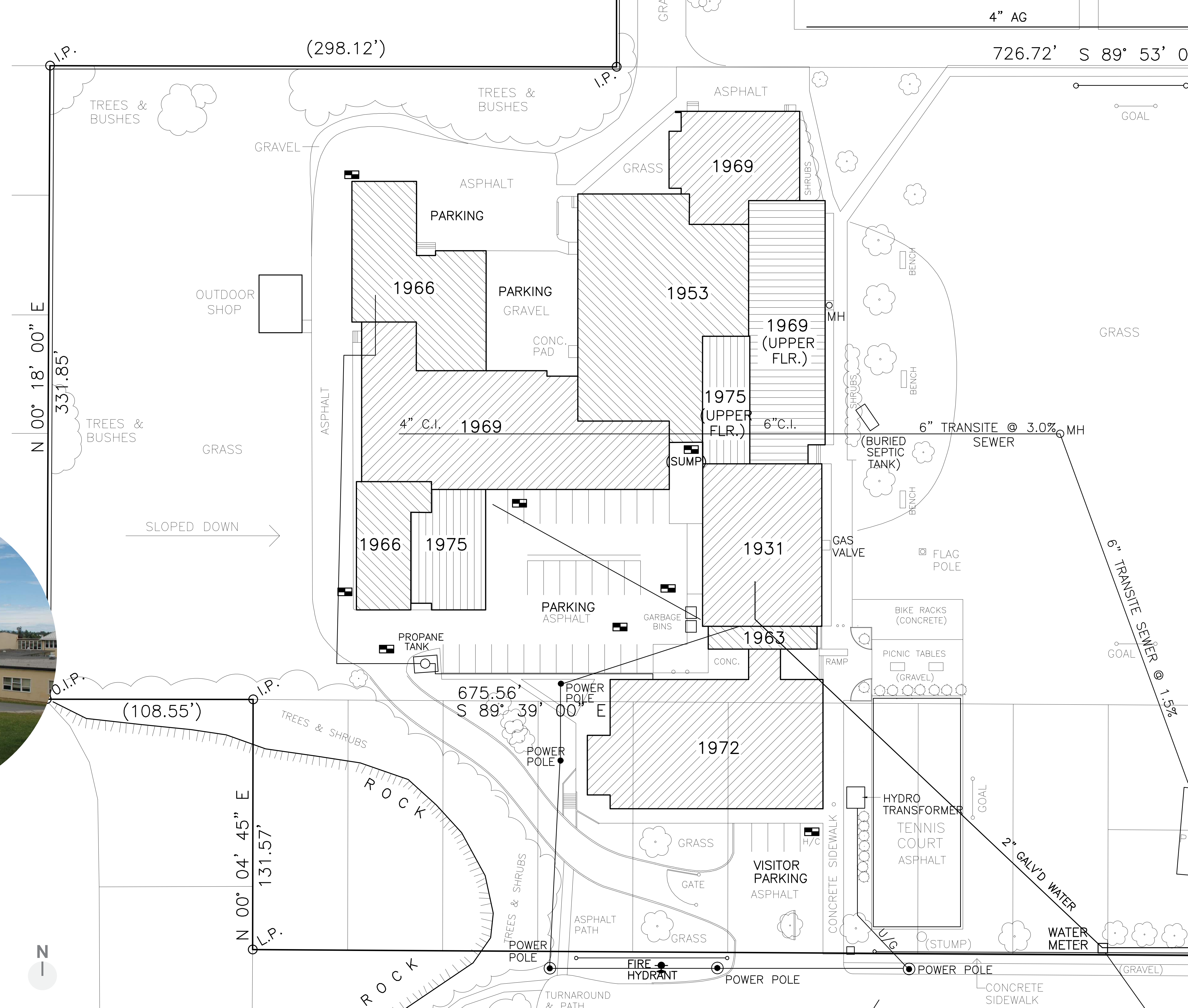


KMBR | ARCHITECTS PLANNERS

Existing Building

- Current enrollment of 515 students
- H-1 seismic rating = highest priority
- Built 1931 with multiple renovations and additions between 1953 and 1975
- 2017 - Building Conditions Assessment found it did not meet current seismic code and other building code requirements
- 2019 - Project Definition Report (PDR) to the Ministry of Education
- 2020 - Funding from the Ministry of Education for full-seismic replacement
- 2021 - Board approves additional funding for Net Zero Energy by Design.

2021 - Board approves additional funding for Net Zero Energy by Design.



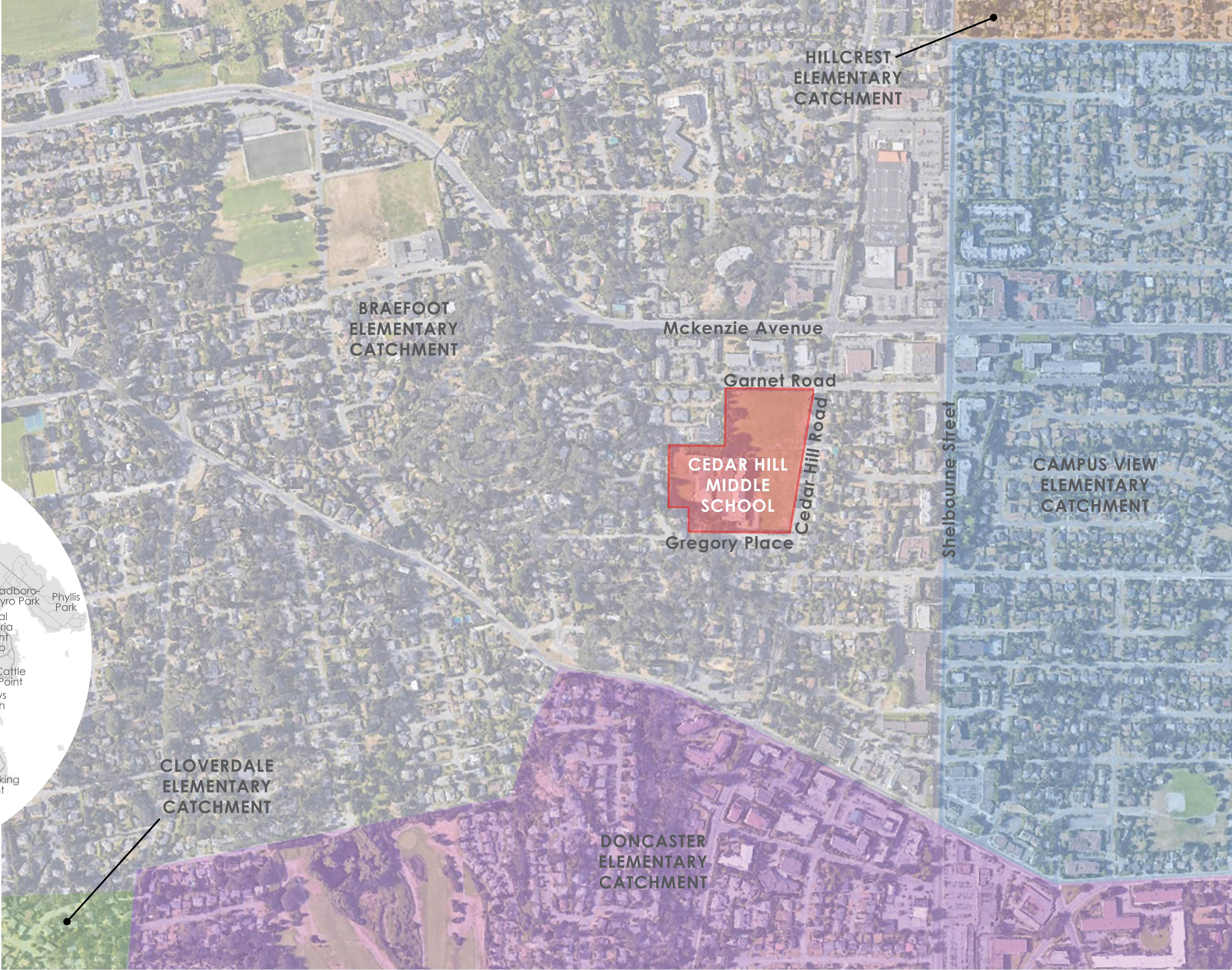
CEDAR HILL MIDDLE SCHOOL • GREATER VICTORIA SCHOOL DISTRICT #61 • MARCH 2022

Enrollment Projections

Current enrollment 515 students

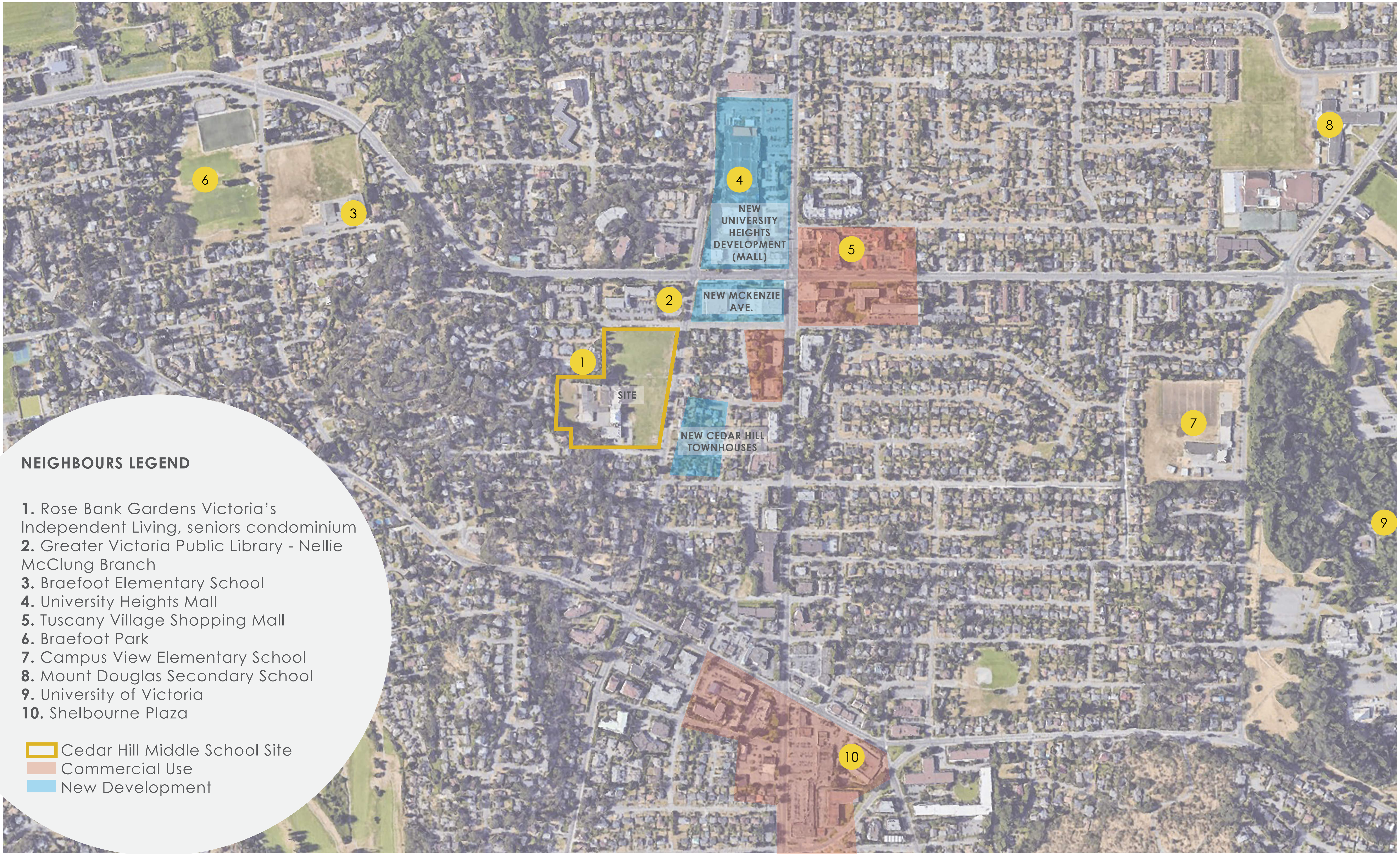
Replacement School 575 students

Future expansion for up to 5 classrooms (125 students)




3.1 ENROLLMENT + PROJECTIONS

CEDAR HILL MIDDLE SCHOOL • GREATER VICTORIA SCHOOL DISTRICT #61 • MARCH 2022



NEIGHBOURS LEGEND

- 1. Rose Bank Gardens Victoria's Independent Living, seniors condominium
- 2. Greater Victoria Public Library - Nellie McClung Branch
- 3. Braefoot Elementary School
- 4. University Heights Mall
- 5. Tuscany Village Shopping Mall
- 6. Braefoot Park
- 7. Campus View Elementary School
- 8. Mount Douglas Secondary School
- 9. University of Victoria
- 10. Shelbourne Plaza

-  Cedar Hill Middle School Site
-  Commercial Use
-  New Development

3.2 NEIGHBOURS

CEDAR HILL MIDDLE SCHOOL • GREATER VICTORIA SCHOOL DISTRICT #61 • MARCH 2022





COMMUNITY ENGAGEMENT SCHEDULE

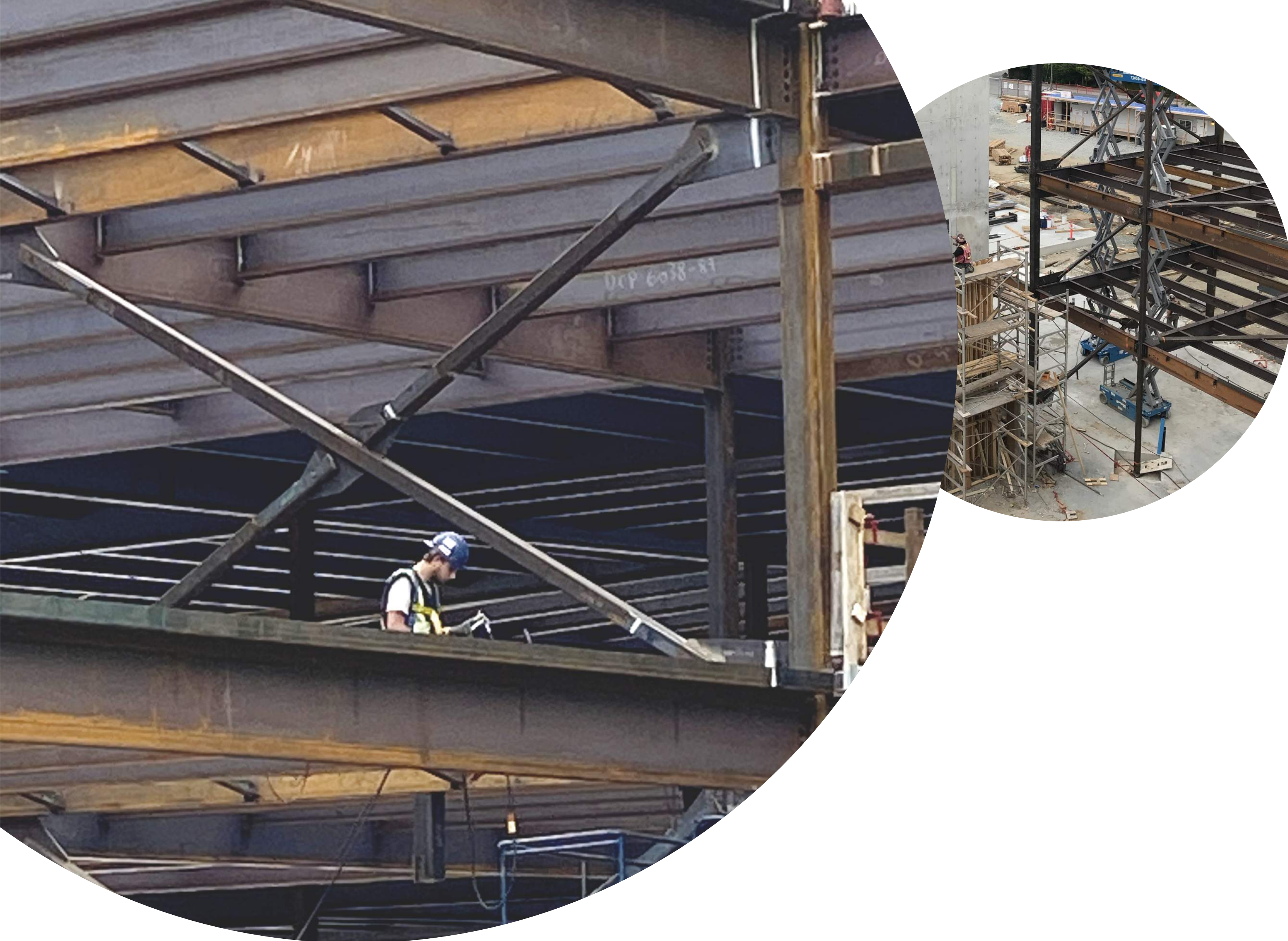
	Description	Date	Status
Visioning	Tours of Existing Middle Schools	October 2021	✓
	Steering Committee Visioning Session	October 22, 2021	✓
	Staff Visioning Session	October 28, 2021	✓
	Student Visioning Sessions	November 2021	✓
	Feeder School Student Visioning Sessions	November 2021	✓
	Public Information Session #1	November 9, 2021	✓
	Online Survey for Parents, PAC, Neighbourhood	November 9-26, 2021	✓
Programming	Consultation with Songhees and Esquimalt Nations	Ongoing	
	Steering Committee Programming Workshop	December 6, 2021	✓
	Consultation with Rose Bank Gardens Living	Mid December, 2021	✓
	Programming Workshops with School Staff	December 8, 2021	✓
	Final Programming Workshop with steering committee	December 14, 2021	✓
Schematic Design	Schematic Design W/shop #1 - Steering committee	December 6, 2021	✓
	Schematic Design W/shop #2 - Steering Committee	January 7, 2022	✓
	Schematic Design Workshop #3 + #4 - Staff	January 13 + 14, 2022	✓
	Public Open House #2	March 3, 2022	
	Schematic Design Final Review & Acceptance	End March, 2022	
Design Development	Cedar Hill Stakeholder Design Development Workshop #1	March 28 - 31, 2022 TBC	
	Cedar Hill Stakeholder Design Development Workshop #2	March 28 - 31, 2022 TBC	
	Cedar Hill Stakeholder Design Development Workshop #3	April 1 - 7, 2022 TBC	
	Cedar Hill Stakeholder Design Development Workshop #4	April 1 - 7, 2022 TBC	
	Public Open House #3	May 28, 2022 TBC	
	Approval to proceed to Construction Doc. Phase	June 1, 2022	

4.1 PROJECT TIMELINE

CEDAR HILL MIDDLE SCHOOL • GREATER VICTORIA SCHOOL DISTRICT #61 • MARCH 2022

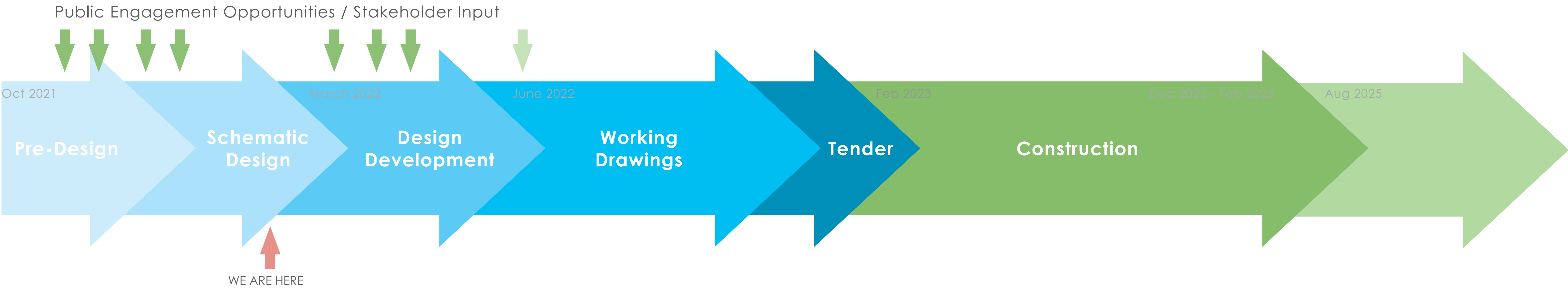


ARCHITECTS PLANNERS



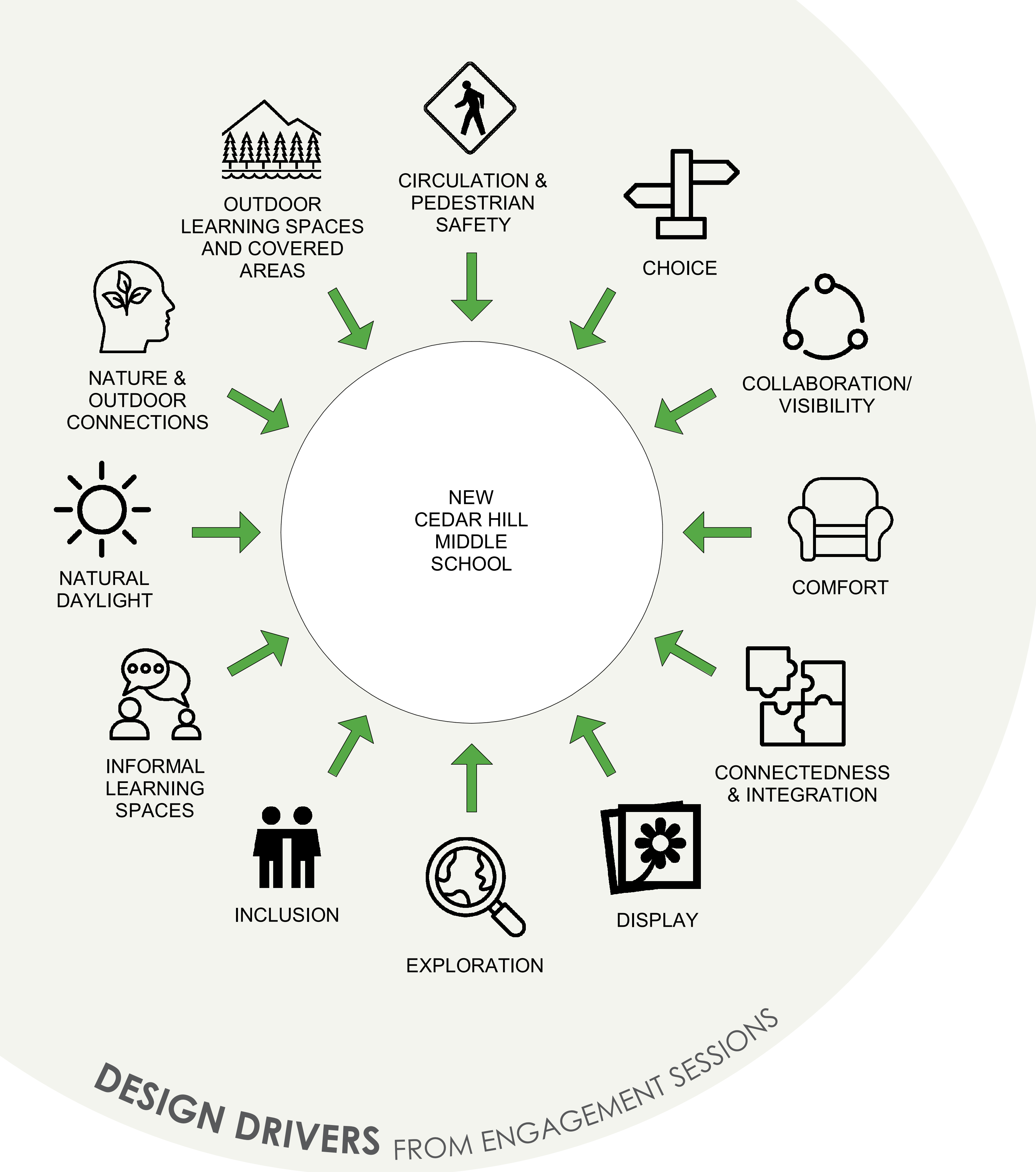
PROJECT SCHEDULE

PHASE	TIMELINE
Pre-design: Visioning + Programming	October - December 2021
First Public Information Meeting	November 9, 2021
Schematic Design Phase	January 2 - March 11, 2022
Second Public Information Meeting	March 3, 2022 - TODAY
Design Development Phase	March 14 - May 29, 2022
Third Public Information Meeting	May 28, 2022. TBC
Working Drawing Phase	June 1 - November 20, 2022
Building Permit Submission	August 24, 2022
Ministerial Approval	November 30, 2022
Tender	December 2022 - January 2023
Construction Phase (20 months)	February 2023 - August 2025



4.2 PROJECT TIMELINE

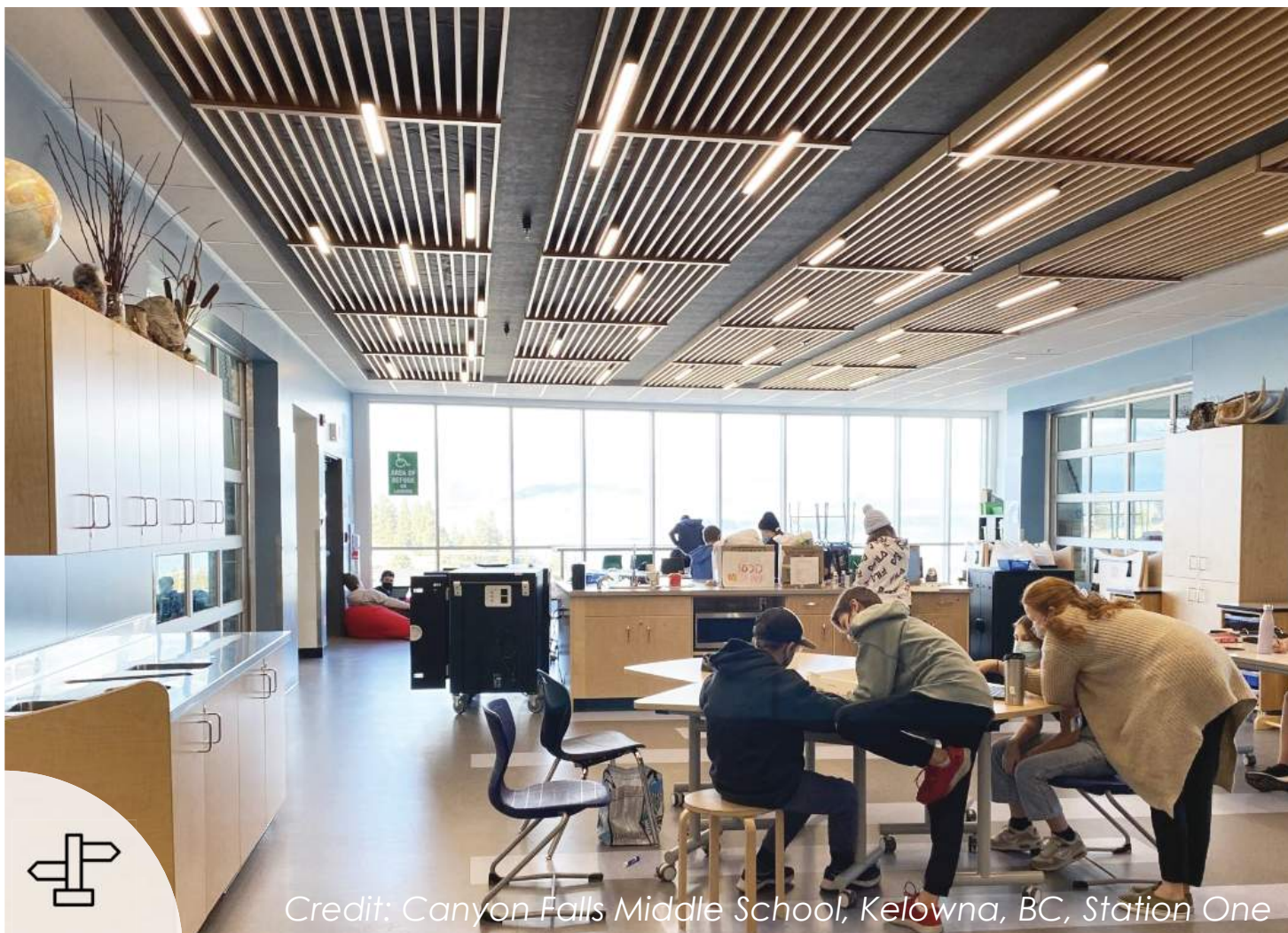
CEDAR HILL MIDDLE SCHOOL • GREATER VICTORIA SCHOOL DISTRICT #61 • MARCH 2022



Key Themes

Throughout the workshops, conversations, and surveys, six themes became evident:

- Access to nature;
- The importance of long-term environmental sustainability;
- The need for flexible and adaptable facilities that reflect current ways of learning and teaching;
- The desire for comfortable, welcoming spaces;
- The importance of outdoor play, outdoor education, and physical activity (including hands on outdoor learning + covered areas for inclement weather);
- The importance of maintaining a wide variety of learning options for students to explore (Music, Drama, Visual Arts, Tech. Education/Shop, Textiles, Culinary Arts, and STEM).



Credit: Canyon Falls Middle School, Kelowna, BC, Station One

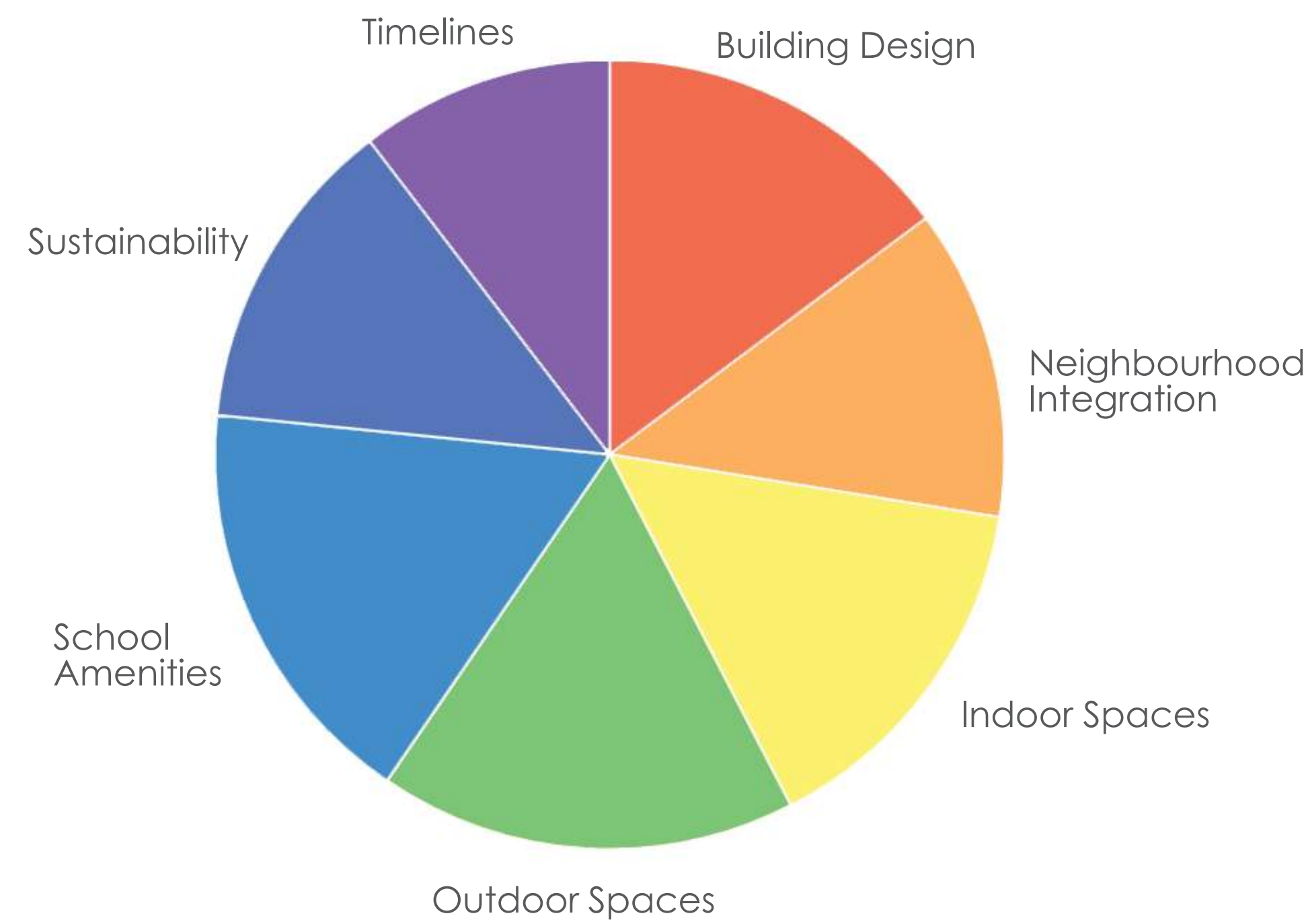


Design Drivers

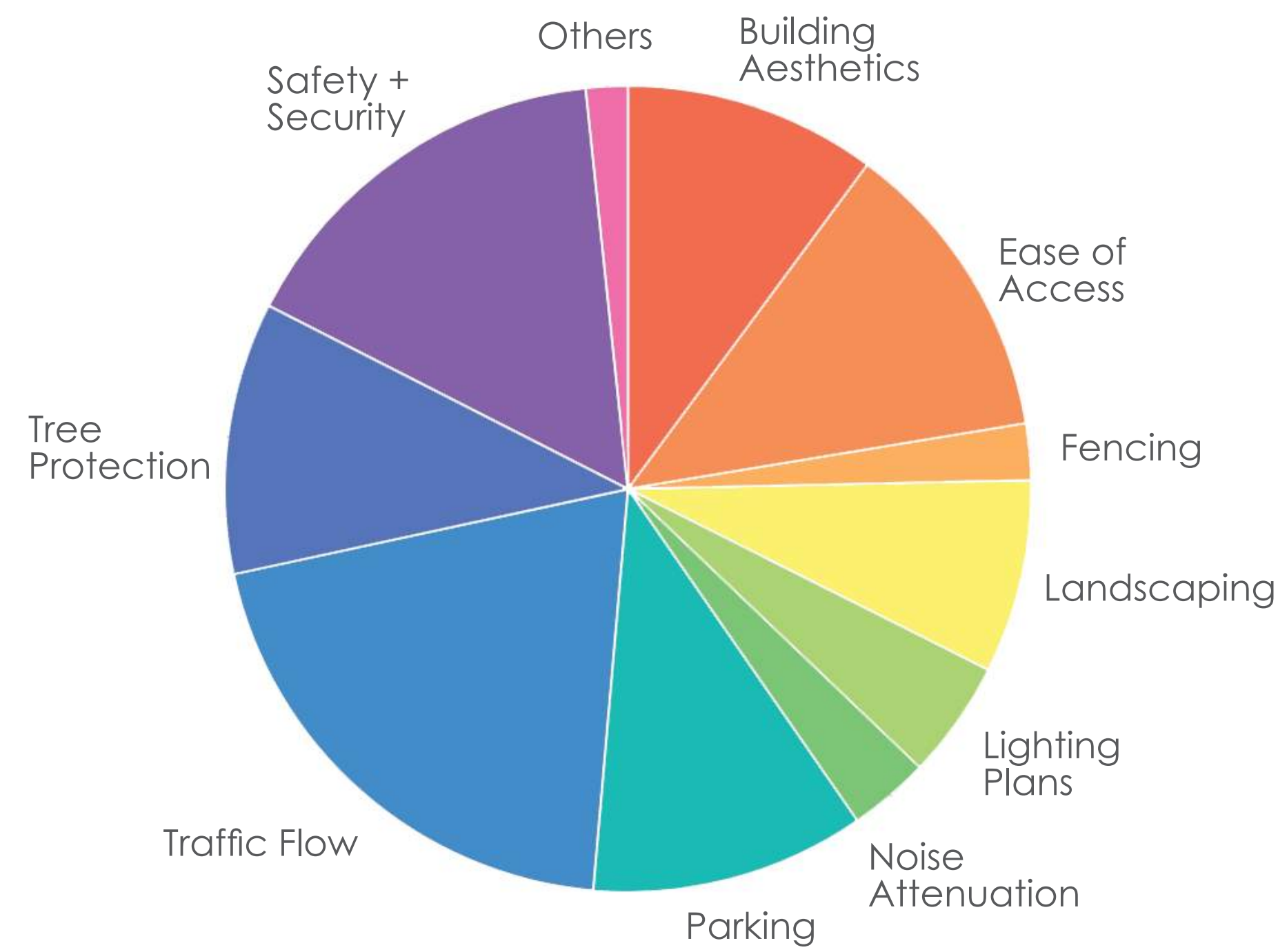
During the Visioning Process, a number of themes began to emerge. These themes or high-level design goals serve as “design drivers” that steer the design in the coming months.



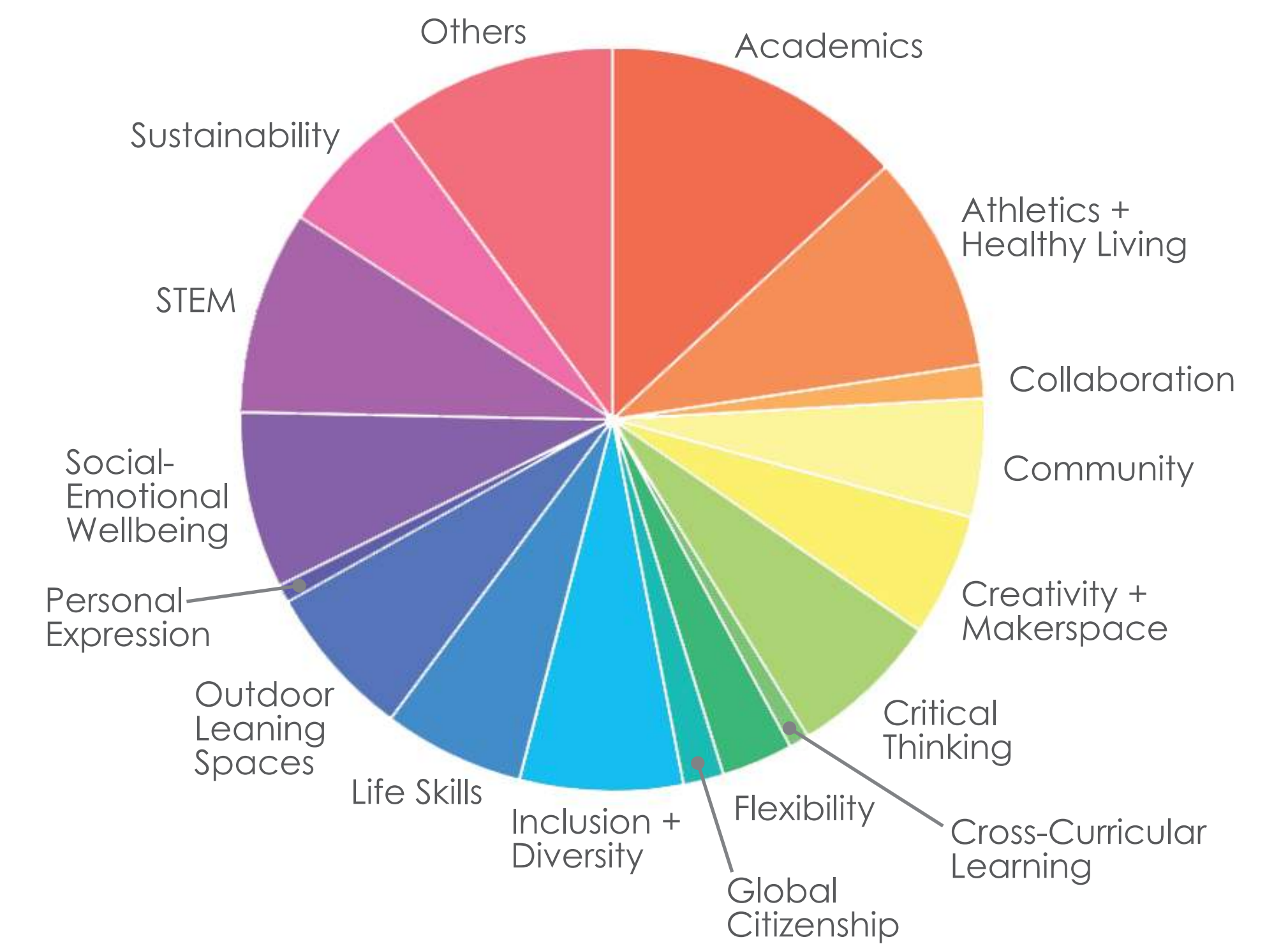
Design + Programming Interests



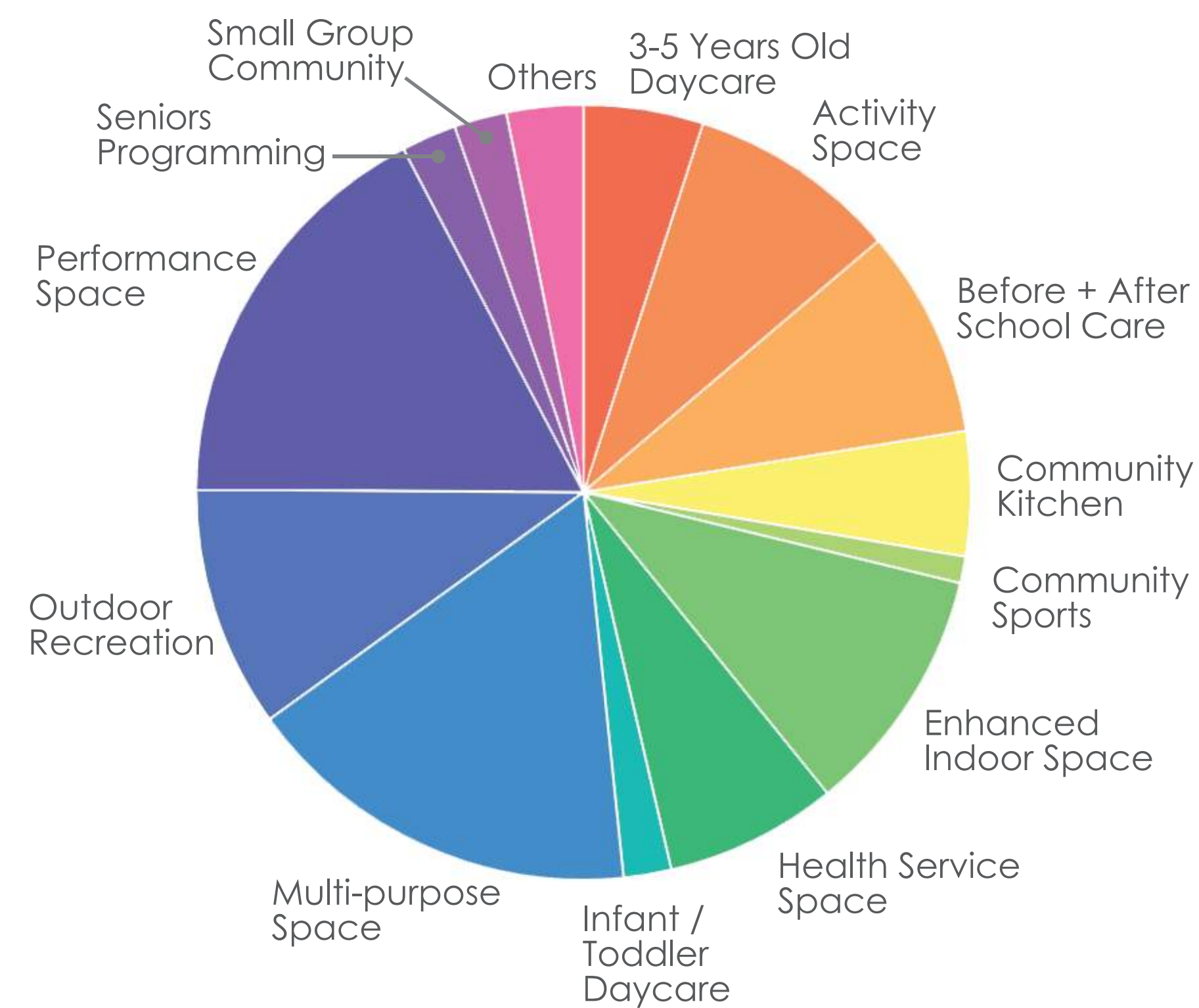
Impact to Surrounding Area Considerations



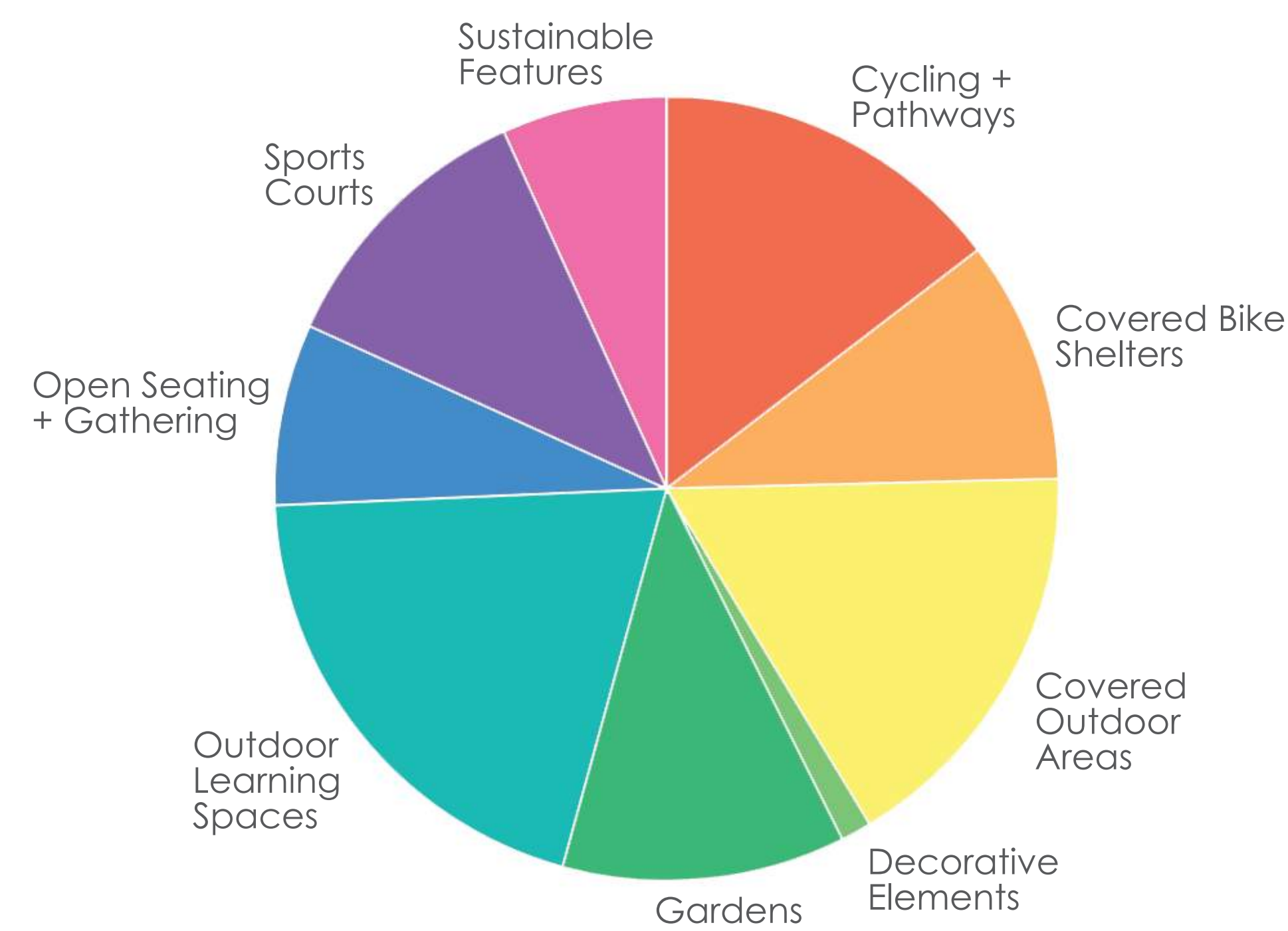
Learning Objectives / Themes



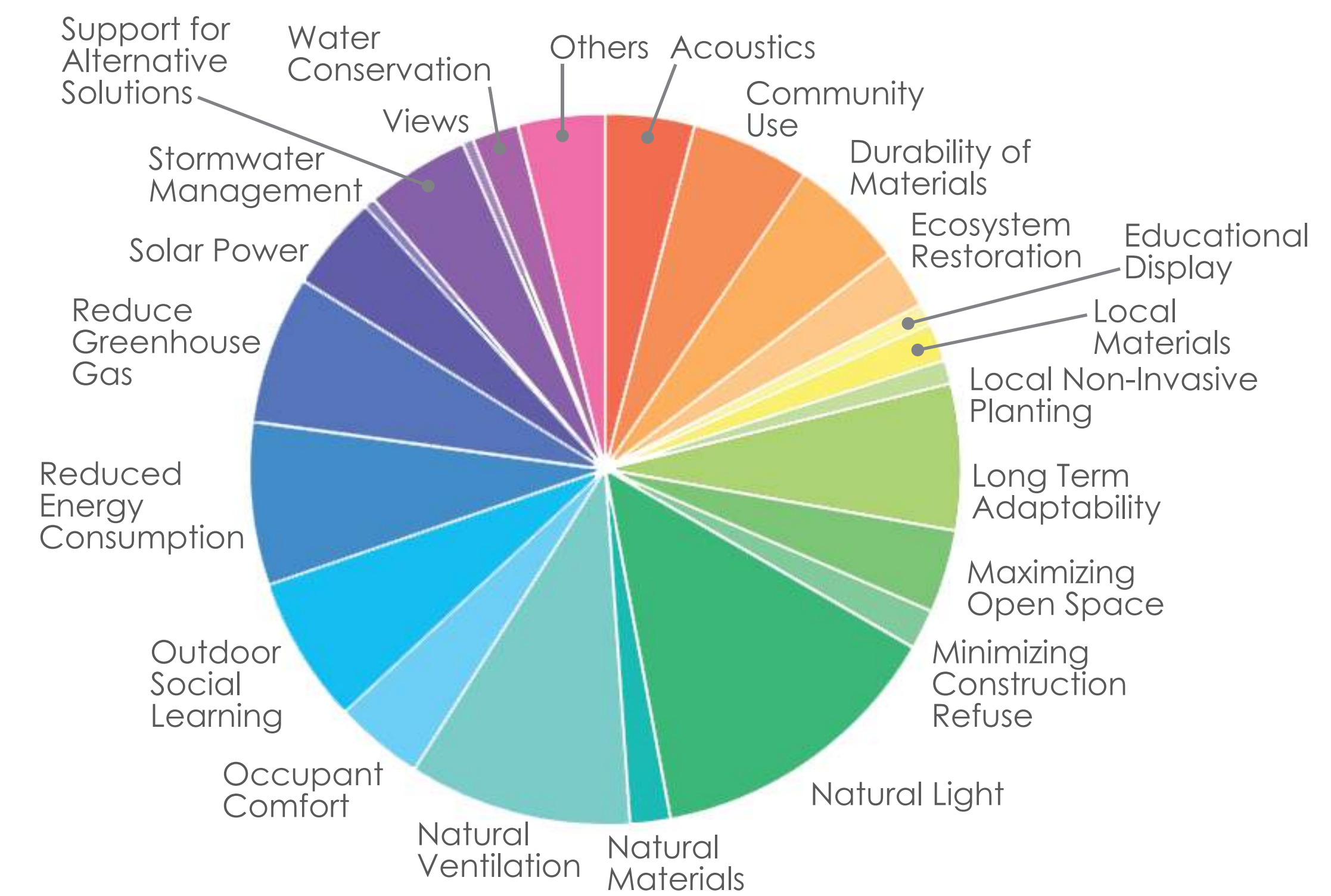
NLC Priorities



Outdoor Features



Sustainable Priorities



From November 9, 2021 Public Survey, 367 Respondents.

5.2 WHAT WE HEARD

CEDAR HILL MIDDLE SCHOOL • GREATER VICTORIA SCHOOL DISTRICT #61 • MARCH 2022



Greater
VICTORIA
School District

KMBR ARCHITECTS PLANNERS

Design Features:

- 575 students
- 64 parking stalls
- accessible parking
- 3 electric vehicle parking
- 6 Secure Bike Parking
- 72 non-secure bike parking
- 2 storey with ample daylight
- built to current accessibility standards
- spaces that better support contemporary, student-centric learning
- sustainable building design - designed for Net Zero Energy with solar panels and air-to-air and/or ground-source heat exchange

GREEN SPACE
ADJACENT TO
NEIGHBOURS

ENERGY EFFICIENT
BUILDING DESIGN

POTENTIAL
GEOTHERMAL FIELD
UNDER NEW PLAYFIELD
LOCATED ON EXISTING
SCHOOL FOOTPRINT

STEEP BLUFF
(NO CONSTRUCTION)

RETAIN ARBUTUS

GARNET ROAD

RETAIN EXISTING
NORTH FIELD DURING
CONSTRUCTION, IF
POSSIBLE

PATHS AND
CONNECTIONS

RETAIN AS MANY
EXISTING TREES AS
POSSIBLE

SOLAR PANELS
INSTALLED ON
2-STOREY ROOF

MAIN ENTRY POINT
VISIBLE FROM
GREGORY ROAD
AND CEDAR HILL
ROAD

KEEP EXISTING
DRIVEWAY
LOCATION (LAY
DOWN AREA DURING
CONSTRUCTION)

LAY DOWN
AREA DURING
CONSTRUCTION

POSSIBLE SECOND
DRIVEWAY TO EASE
TRAFFIC FLOW

N

GREGORY PLACE

MAIN
ENTRY

CEDAR HILL ROAD

6.0 PRELIMINARY PROPOSED DESIGN

CEDAR HILL MIDDLE SCHOOL • GREATER VICTORIA SCHOOL DISTRICT #61 • MARCH 2022

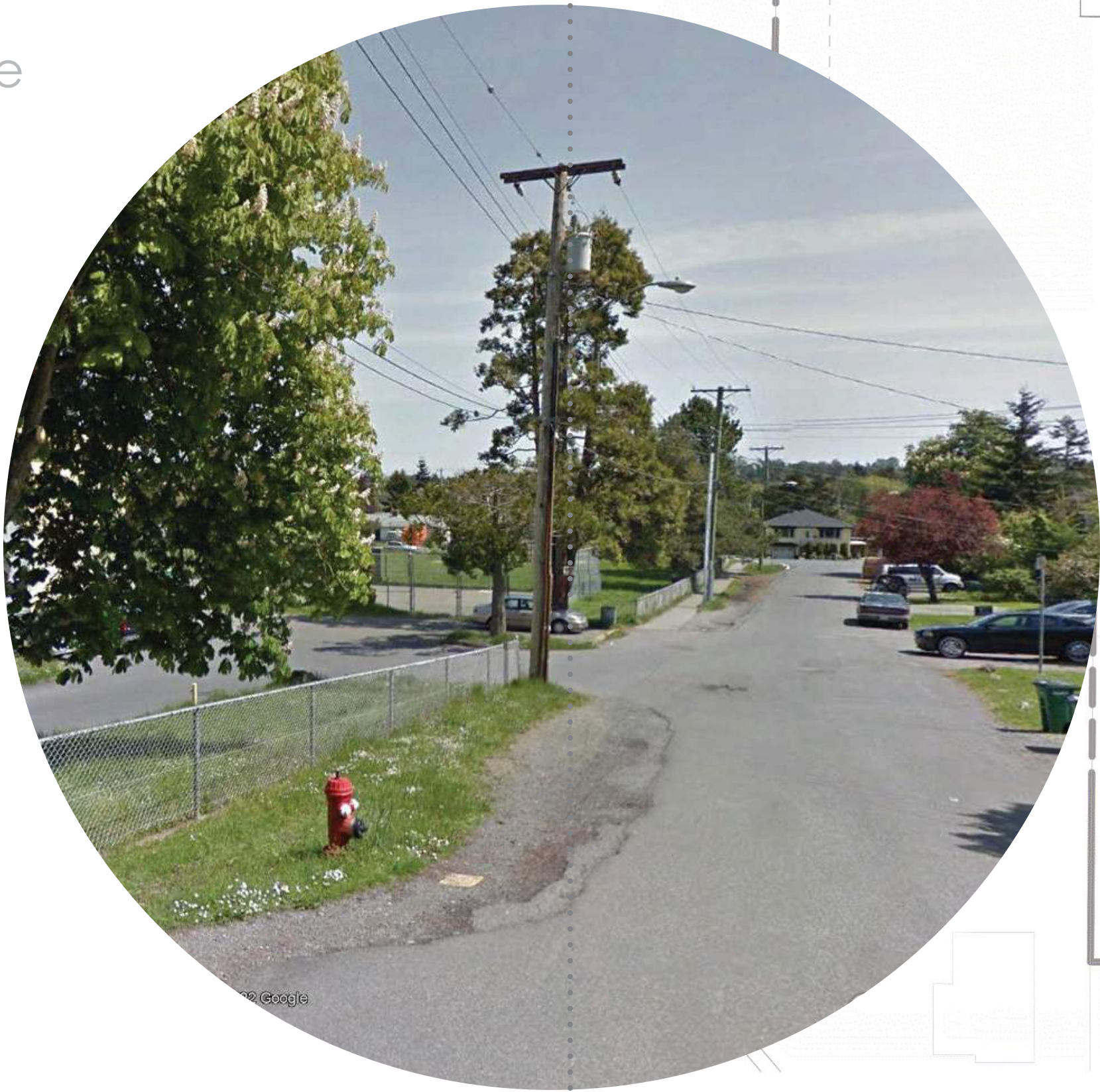
DESIGN INTENT IS TO RETAIN TREES WHERE POSSIBLE. SOME TREES WILL BE REMOVED FOR DRIVEWAY AND BUILDING ENTRIES, AND SOME FOR FIELD #2



- LEGEND**
- Removed trees
 - Retained trees
 - New trees
 - Retained Shrubs
 - Bluff (Trees and Shrubs)

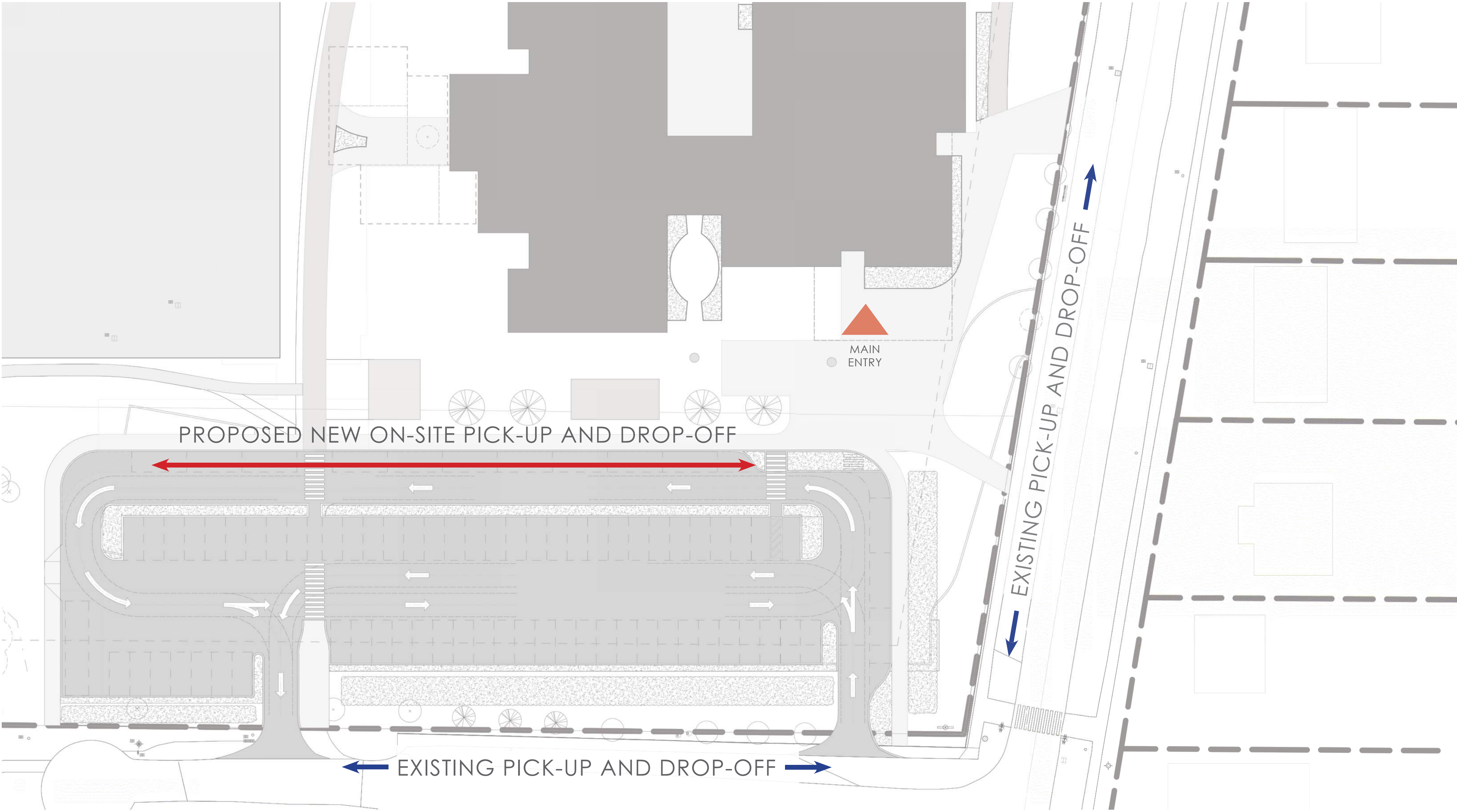
QUESTION: DO YOU SUPPORT ADDING
A SECOND DRIVEWAY TO IMPROVE
VEHICULAR CIRCULATION?

place sticky notes here



QUESTION: DO YOU SUPPORT ADDING
ONSITE PICK-UP AND DROP-OFF IN
ADDITION TO THE EXISTING PICK-UP AND
DROP-OFF ON THE STREET?

place sticky notes here

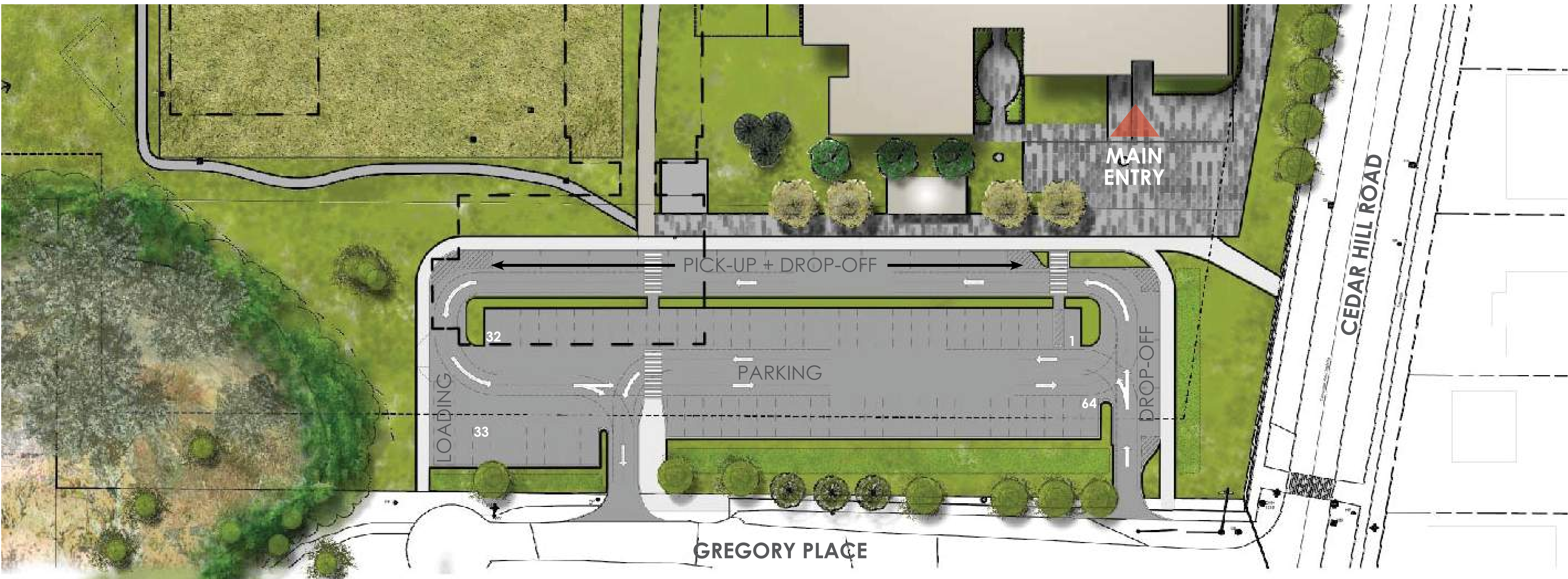


The Municipality has indicated that the site has good access to walking and cycling paths, and public transit. They support a reduction in the number of parking stalls to free up more green space on site. The Parking Bylaw requires between 61 and 64 stalls.

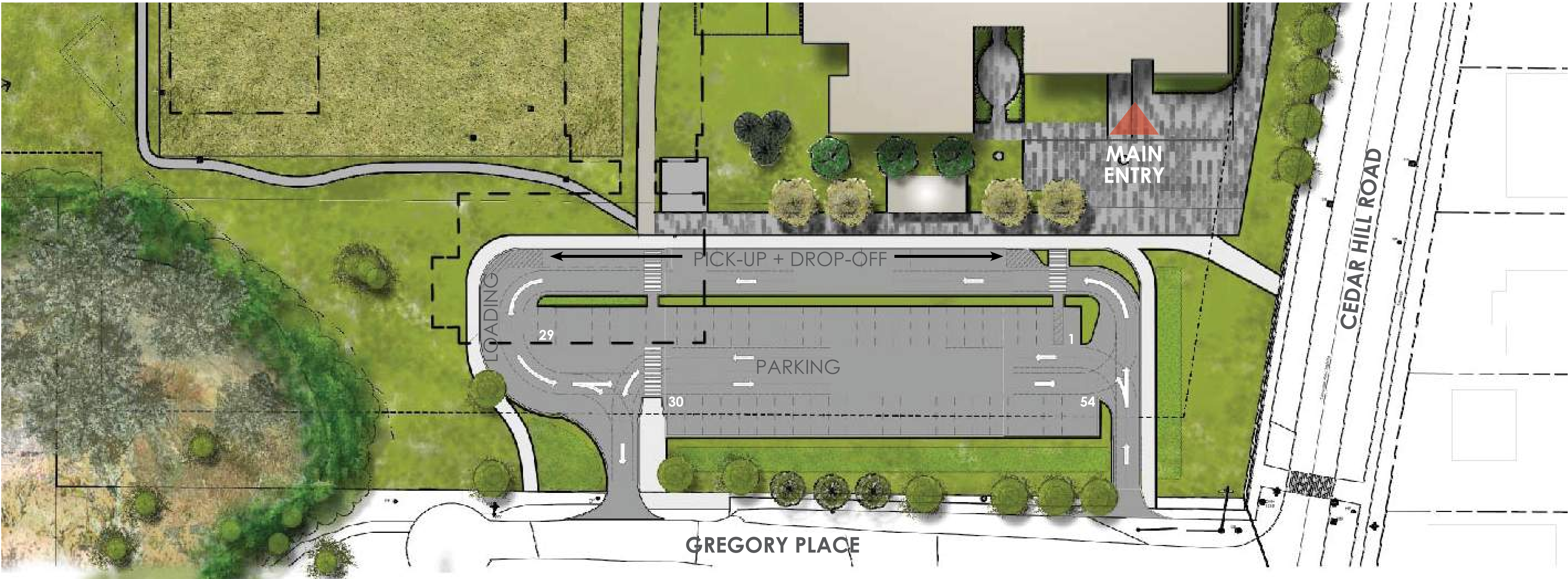
Question:

Would you support reducing the number of parking stalls on site by up to 15% to free up more green space on site?

place sticky notes here



OPTION 1: ±64 PARKING STALLS



OPTION 2: 54 PARKING STALLS (REDUCE BY 15%)

8.3 REDUCED PARKING OPTION








CEDAR HILL MIDDLE SCHOOL • GREATER VICTORIA SCHOOL DISTRICT #61 • MARCH 2022

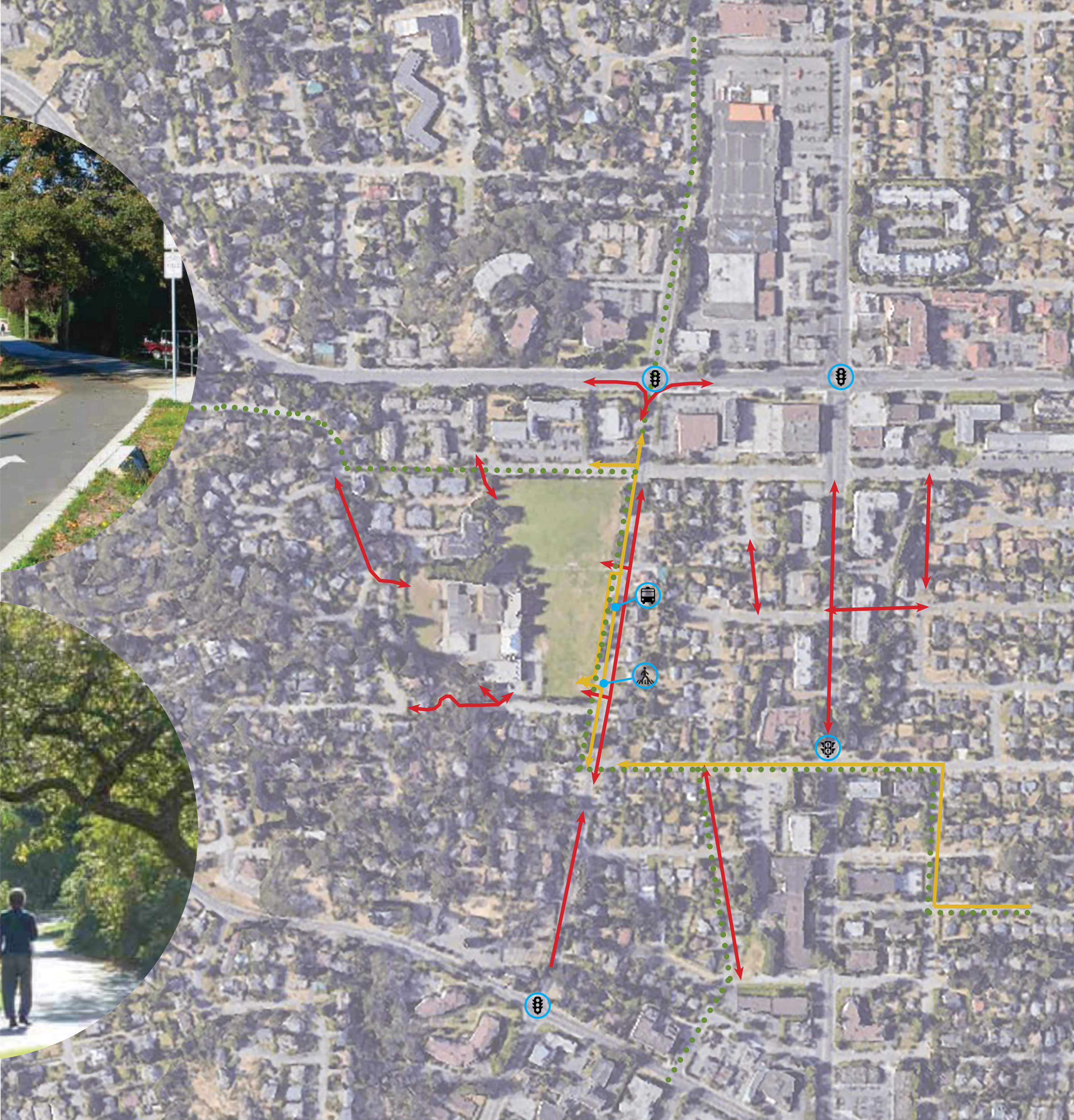
QUESTION: WHERE DO YOU WANT TO
SEE ACCESS TO THE SITE:
- FOR BIKES?
- FOR PEDESTRIANS?



place sticky notes on
adjacent board

LEGEND

-  Bus stop
-  Traffic signal
-  Controlled crossings
-  Pedestrian signal
-  Pedestrian connectivity
-  Cycling connectivity
-  Greenway



9.1 PEDESTRIAN AND BIKE ACCESS

CEDAR HILL MIDDLE SCHOOL • GREATER VICTORIA SCHOOL DISTRICT #61 • MARCH 2022



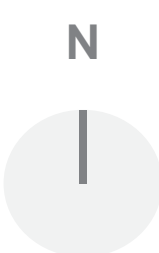
Greater
VICTORIA
School District

KMBR | ARCHITECTS PLANNERS

QUESTION: WHERE DO YOU WANT TO SEE
ACCESS TO THE SITE:

- FOR BIKES?
- FOR PEDESTRIANS?

place sticky notes on the
board without covering
the site



9.2 PEDESTRIAN AND BIKE ACCESS (NOTES)

CEDAR HILL MIDDLE SCHOOL • GREATER VICTORIA SCHOOL DISTRICT #61 • MARCH 2022



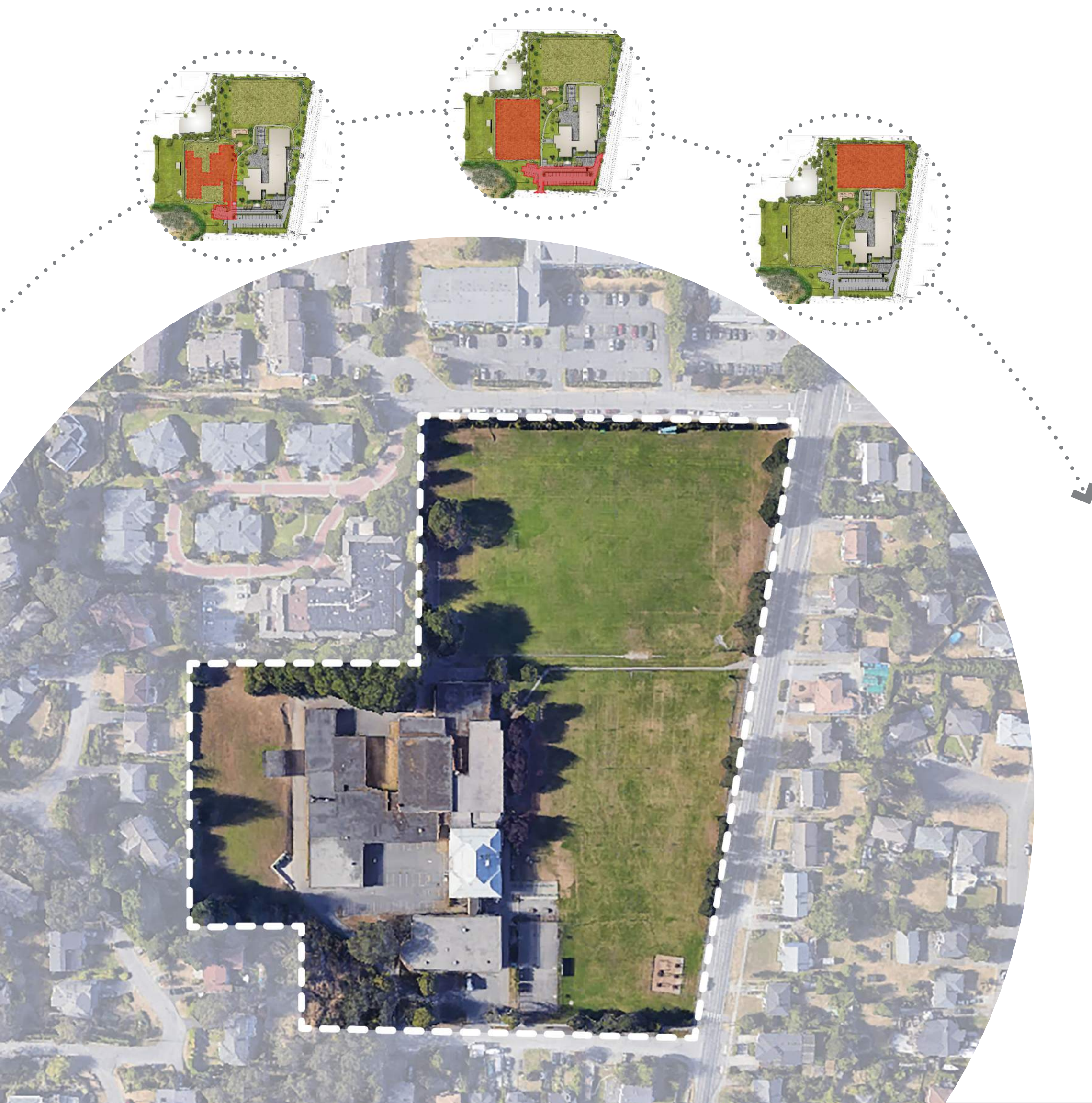
Greater
VICTORIA
School District

KIMBR ARCHITECTS PLANNERS

Question:

What site amenities would you like the school district to prioritize?

place sticky notes here



- Legend**
- | | |
|---------------------------------|--------------------------------|
| 1 Field 1 | 7 Secure Bike Storage |
| 2 Field 2 - Proposed Geothermal | 8 Non-Secure Bike Storage |
| 3 New Climbling Structure | 9 Entrance Courtyard |
| 4 Basketball + Tennis Courts | 10 Garbage Enclosure |
| 5 Gaga Ball | 11 Outdoor Seating / Classroom |
| 6 Outdoor Courtyard | 12 Existing Storage Enclosure |



10.0 SITE AMENITIES

CEDAR HILL MIDDLE SCHOOL • GREATER VICTORIA SCHOOL DISTRICT #61 • MARCH 2022

Questions:

What elements do you value the most and would like to see included in the new build?

What elements of the current building or site are most challenging?

place sticky notes here



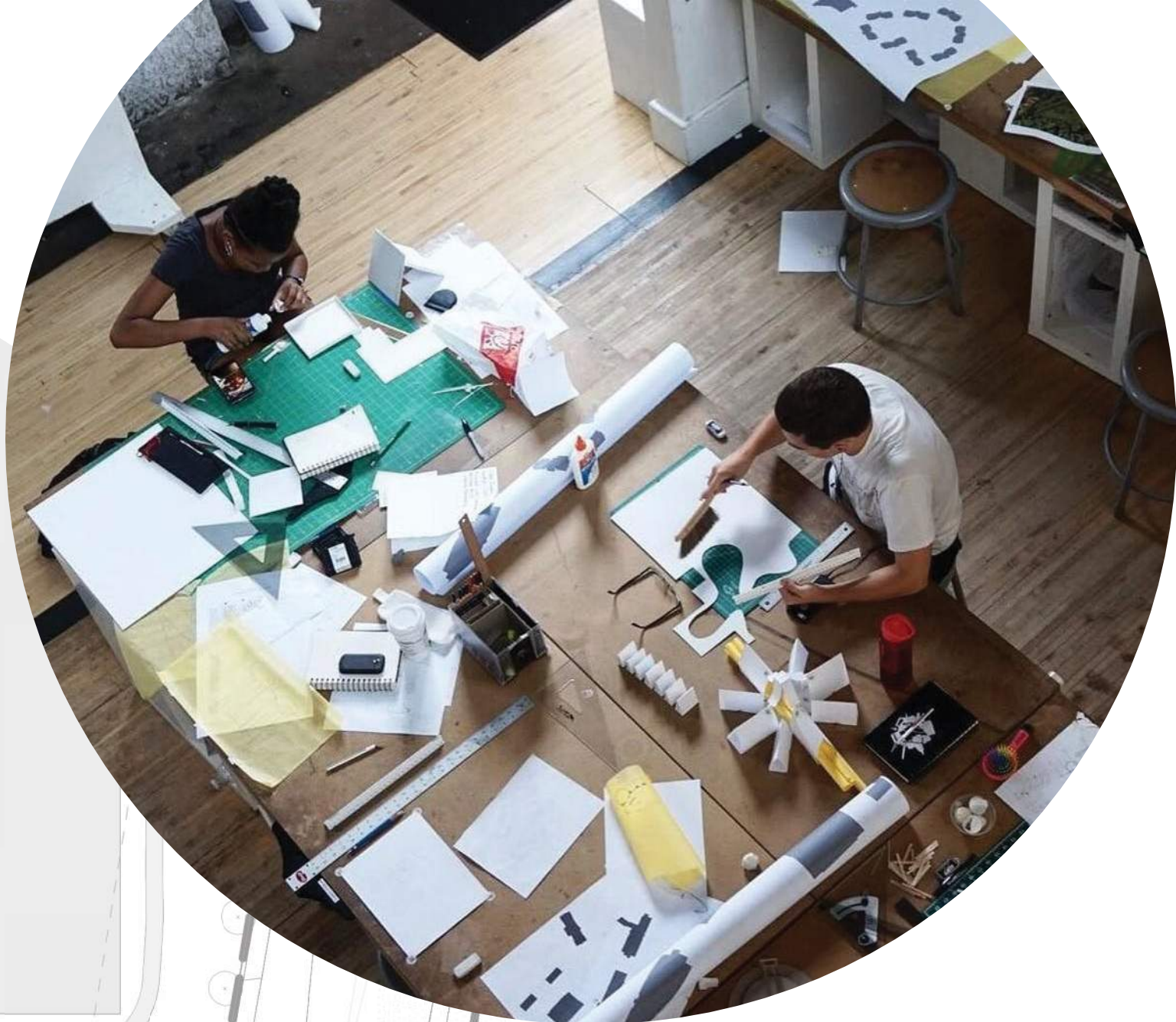
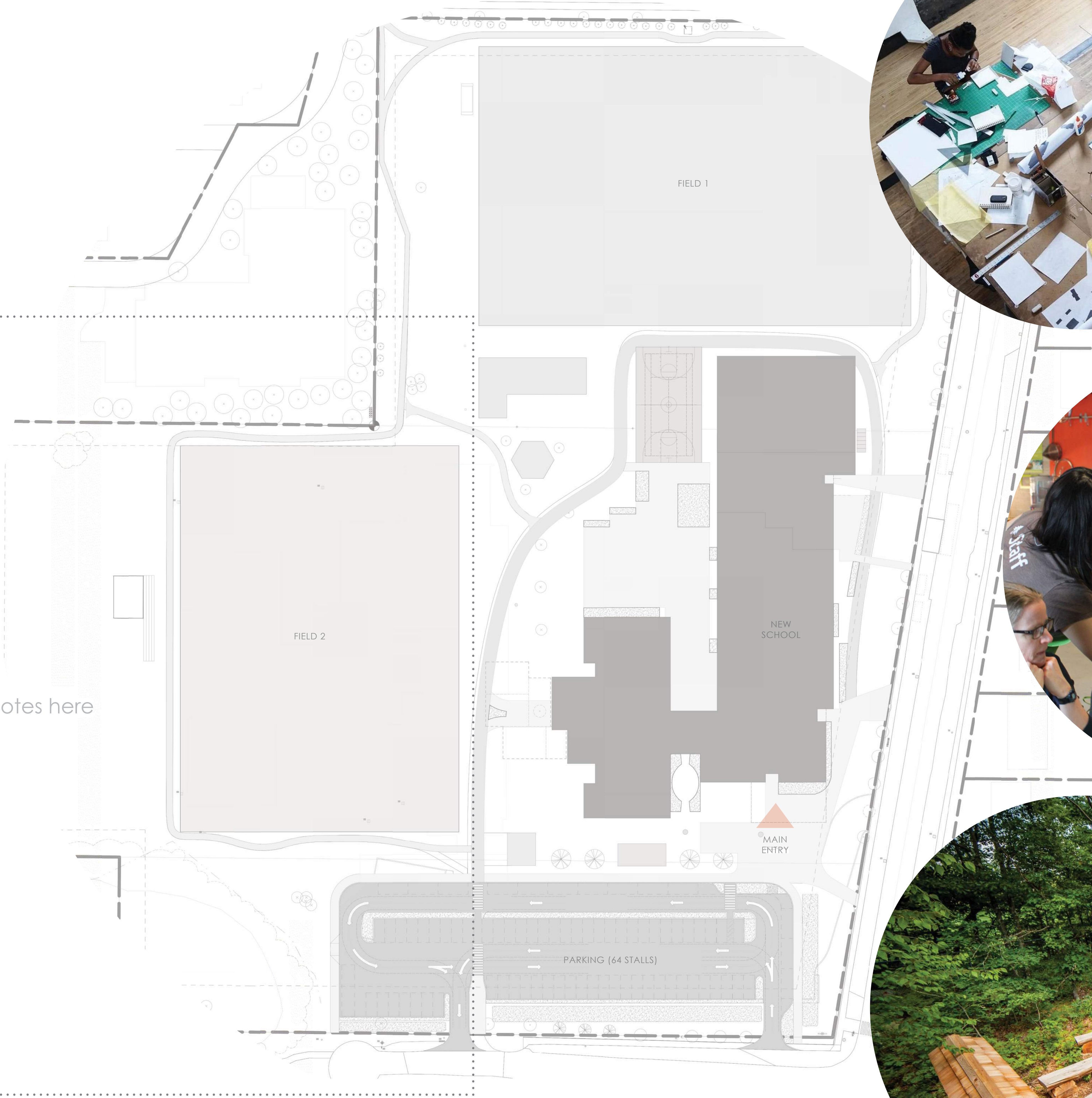
11.0 ELEMENTS TO RETAIN

CEDAR HILL MIDDLE SCHOOL • GREATER VICTORIA SCHOOL DISTRICT #61 • MARCH 2022



QUESTION: WHAT OTHER IDEAS/
NEEDS SHOULD BE CONSIDERED
WHEN PLANNING FOR THE
FUTURE OF CEDAR HILL MIDDLE
SCHOOL?

place sticky notes here



12.0 ADDITIONAL COMMENTS

CEDAR HILL MIDDLE SCHOOL • GREATER VICTORIA SCHOOL DISTRICT #61 • MARCH 2022