



GORDON HEAD MIDDLE SCHOOL

LEARNING AREAS.... GOALS



LITERACY
(FOCUS ON WRITING)

-FSA (2019)

STEM

(Science, Technology,
Engineering & Math)

-Staff & student interest

**Social Emotional
Learning**
(Physical + Mental)

(MDI, 2018)

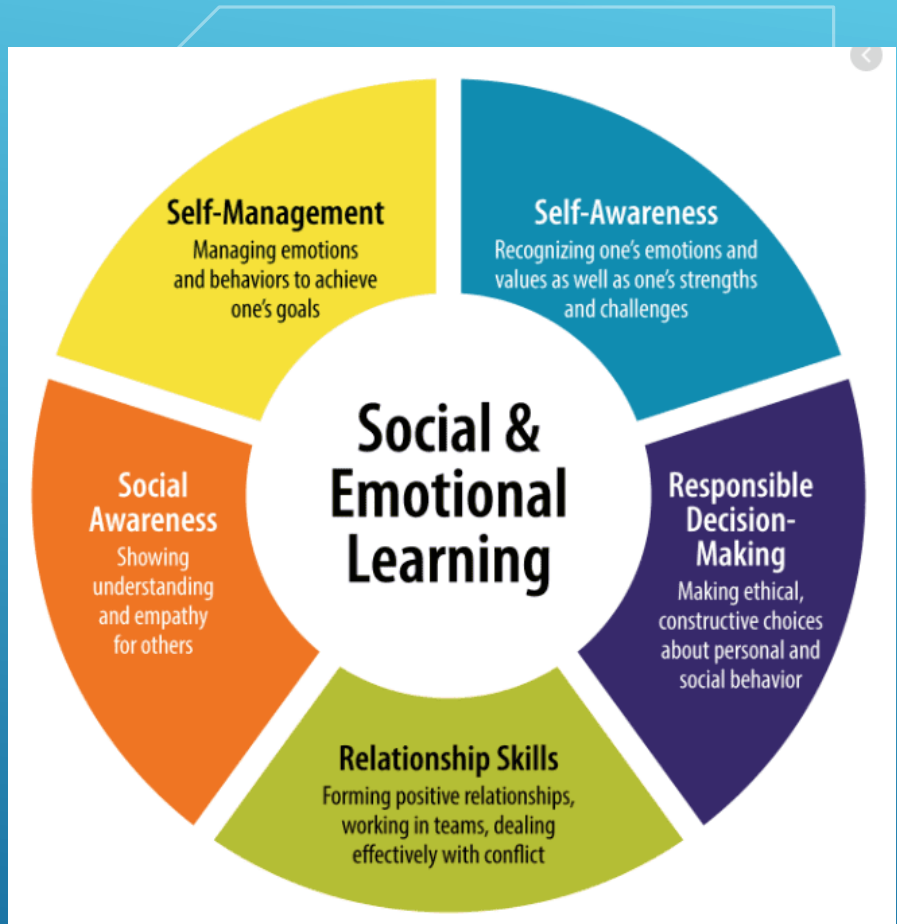
COVID 19 HIT....



and what we learned about our kids

- increased sense of isolation
- increased number of students feeling effects of depression
- increased sense of loneliness
- even greater connection to the digital world (gaming & social media)



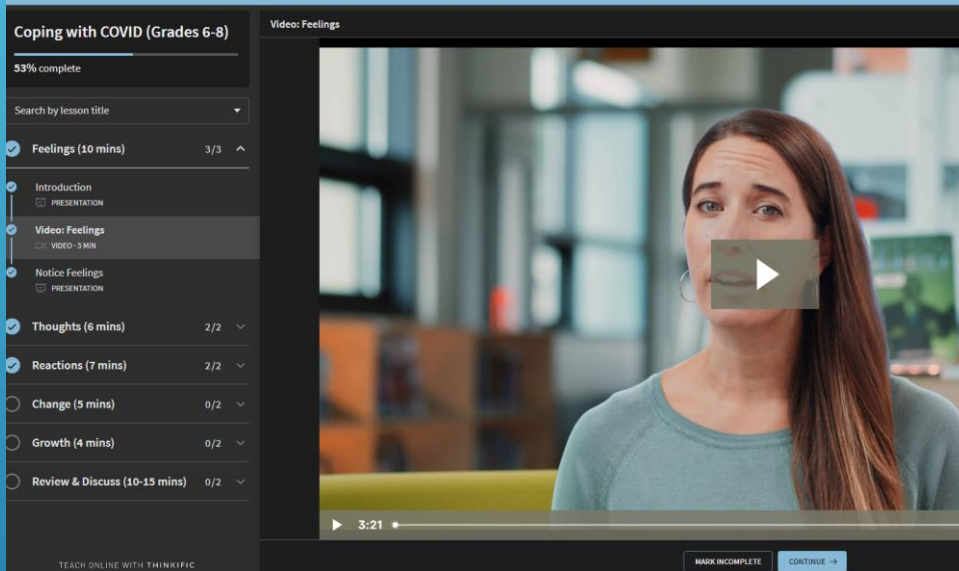


OUR FOCUS BECAME SOCIAL EMOTIONAL LEARNING

- Direct instruction – methods to provide recognition and intervention strategies for our students
- Indirect Instruction – methods to provide opportunities for students to re-engage with one another
- Advisory

Open Parachute – on line school well-being program

MINDFULNESS – instruction through Tall Tree Integrated Health



DIRECT INSTRUCTION



ADVISORY

morning starts with a circle – student time to share and connect

This would be helpful because if you are ever stressed or anxious this would clear your mind and body and it is amazing for your well being.

Daily outdoor activities



Games to connect face
to face



INDIRECT INSTRUCTION

Extra Curricular Activities



Nature Walks



INDIRECT INSTRUCTION