

SD61 Greening Application



Spectrum Indigenous Medicine Garden



School Garden and Cooking Pro-D Day

Presented by: Marcus Lobb (F2SBC), Aaren Topley (PHABC) and Janelle Hatch (Island Health)



Agenda

1. Introduction
2. Showcase of SD61 Gardens
3. Research and Statistics
4. Recommendations
5. Document Process and Procedures
6. Overview of Document
7. Next Steps
8. Questions and contacts



Colquitz Middle

Showcase of SD61 Gardens



Shoreline Middle



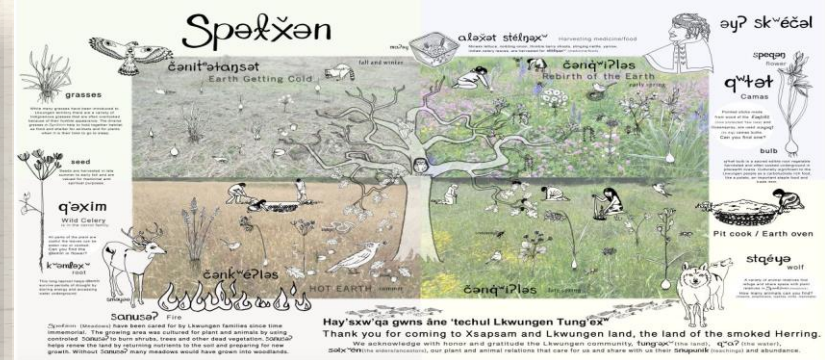
Rogers Elementary



Colquitz Middle

Harvest4Knowledge

Victoria High School Garden
matawlia si'sət sk^wəwlewtx^w ščəniŋət



Čən'inət Spring Celebration - 'to be planting' Spring Celebration

Vic High Learning Farm



Reynolds Secondary



Sprouting School Gardens Research

- Online School Garden Survey
- Administrator and/or School Garden Champions
- School Garden Observations
- Schools in School District 61 (n=24/44 schools)
- 16 schools had a functional garden and a fully completed the survey (response rate of 64%).



Monterey Middle School



Research Findings

Strengths

- Administrator Buy-in
- Networks
- Technical Assistance
- Garden Upkeep
- Volunteerism

Challenges

- Professional Development
- Garden Committee
- Educational Material
- School Garden Irrigation
- Classroom Time in the garden
- District-Wide School Garden Policy



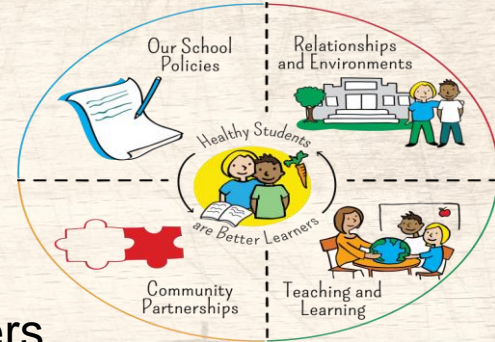
Recommendations

Community Partnerships

- Professional development for school staff
- District level coordination in directing volunteers or community partners to support schools

School Environment:

- Staff time dedicated to the garden
- School level Garden Committee



Marigold Elementary School

Recommendations

Teaching and Learning:

- Integration of garden in classes, programs or courses
- Curriculum support for teachers to engage all grade levels into the garden

Policy/Practice:

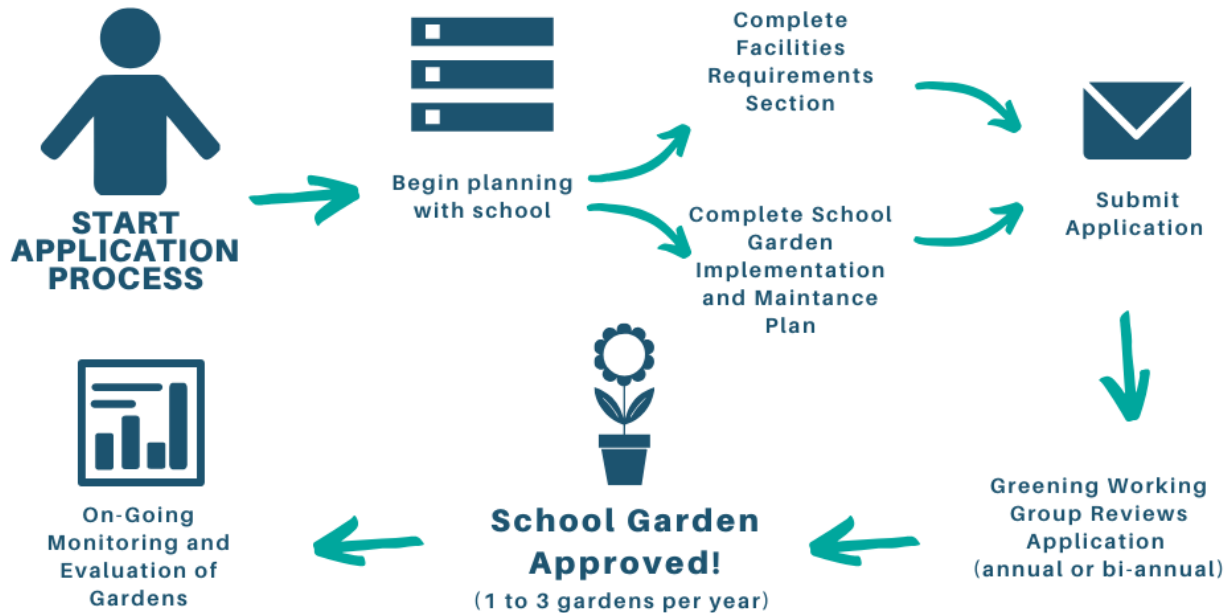
- Financial support for gardens
- Regular monitoring and feedback loops at the school level and district level
- District level school garden working group to set short and long term goals for school garden integration



Cloverdale Traditional
School

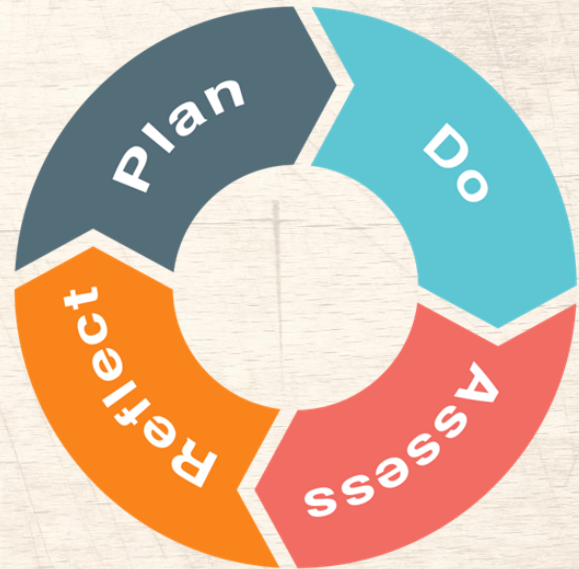


Greening Application (Proposed Process)



Overview of Sections within the Application

- Facilities Requirements
- Site Map of Garden
- School Garden Planning
- Maintenance Plan
- Sustaining the Garden Committee
- Learning and Education
- Evaluation

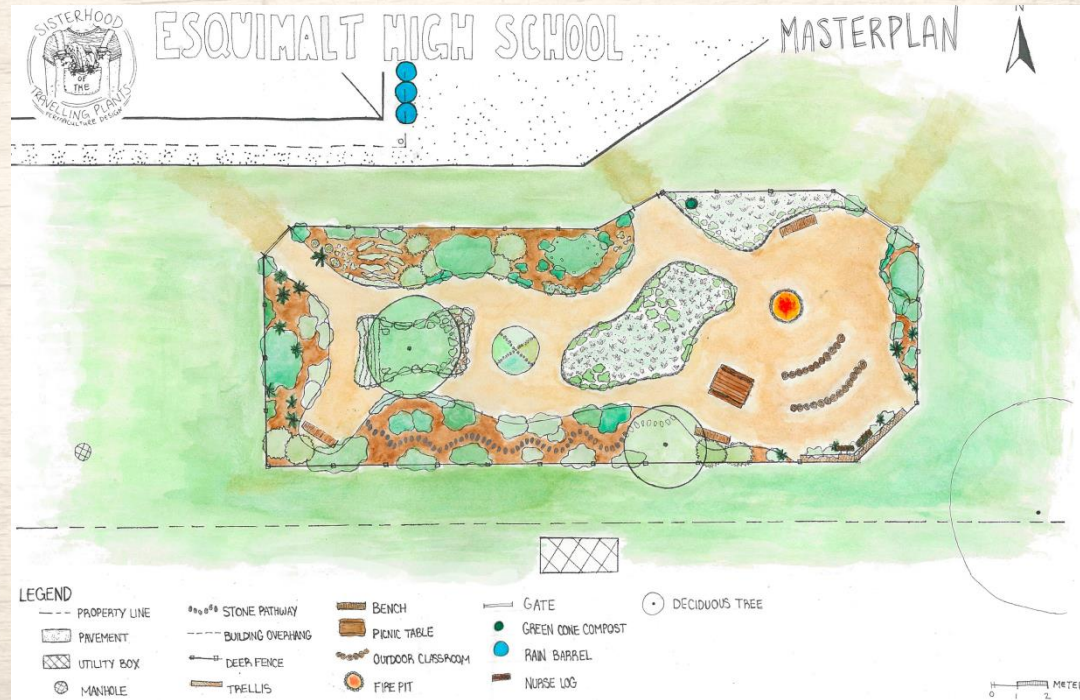


Facilities Requirements

- Fencing
- Irrigation / Water Access
- Signage
- Seating
- Small buildings
- Trees
- Perennial Plants



Site Map of Garden



School Garden Planning and Sustainability

- Creation of Garden Planning Committee (Garden Team Contacts)
- Goals Planning
- Structure of your committee, and process for documentation
- Details of garden design and how they will engage students.



Torquay Elementary

Maintenance Plan

- Seasonal Needs of Garden
- Activities by season
- Need for summer maintenance



Learning and Education Plan and Evaluation

School gardens are built with the intention of being learning spaces promoting mental health and academic learning. In this section, we want to understand the type of learning and/or mental health outcomes you want to see in your garden.



Next Steps

- Establishing a Greening Working Group
- Finalizing Greening Application
- Request existing gardens complete a similar form
- Have new gardens complete the application
- On-going evaluation/monitoring



Questions and Contacts

Marcus Lobb (F2SBC): capitalregion@farmtoschoolbc.ca

Janelle Hatch (Island Health): Janelle.Hatch@viha.ca



South Park Elementary