



# One *Learning* Community



# Vic High: Planning for the Future

---



One *Learning* Community



# Vic High: Overview

---

- Located at 1260 Grant Street
- Opened May 1, 1914
- School is approximately 15,000 square metres
- 1 of 7 high schools in District
- Several renovations have occurred over the years: most recent addition of the Fairey Technical Building in 2011
- Current enrolment is 850 students in grades 9 - 12
- Capacity is 850 students



# Vic High: Seismic

---

- BC Seismic Ranking Program ranks Vic High as High 1 (H1): *“Most vulnerable structure; at highest risk of widespread damage or structural failure; not repairable after event. Structural and non-structural seismic upgrades required.”*
- BC Government approving projects to structurally upgrade schools that have a “High” risk rating (H-1, H-2 or H-3).
- Structural upgrades will also correct any non- structural deficiencies.

# Long-term Facilities Plan

---

The Long-Term Facilities Plan guides the capital investment decisions for supporting a long-term vision for the District.

This plan takes into consideration:

- Demographics, Utilization and Capacity
- Programming and Future Needs
- Facility Condition
- Community Partnership and Enterprise
- Land and Leasing
- School specific information



## Long Term *Facilities* Plan

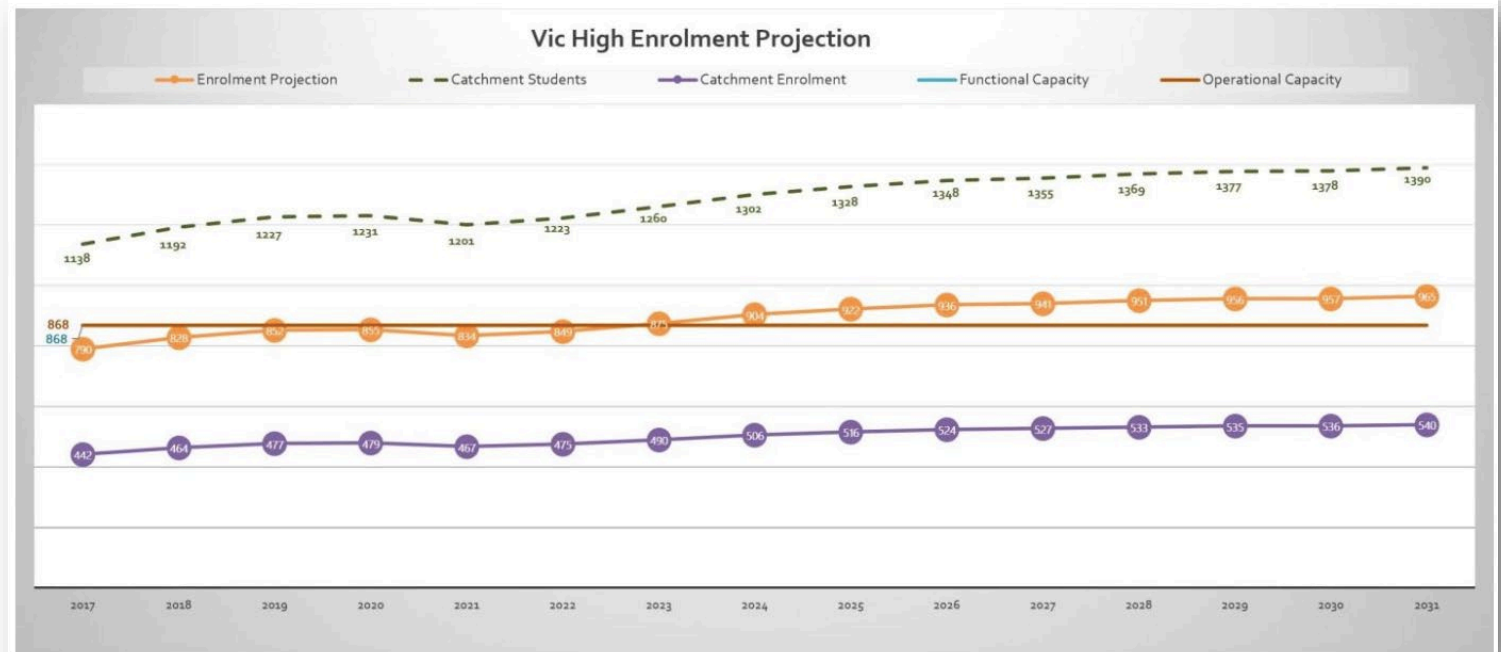


One *Learning* Community

# Vic High Projections

After years of declining enrolment, student enrolment is increasing.

There are currently 300 students in the Vic High neighbourhood catchment that cannot be accommodated at the school.



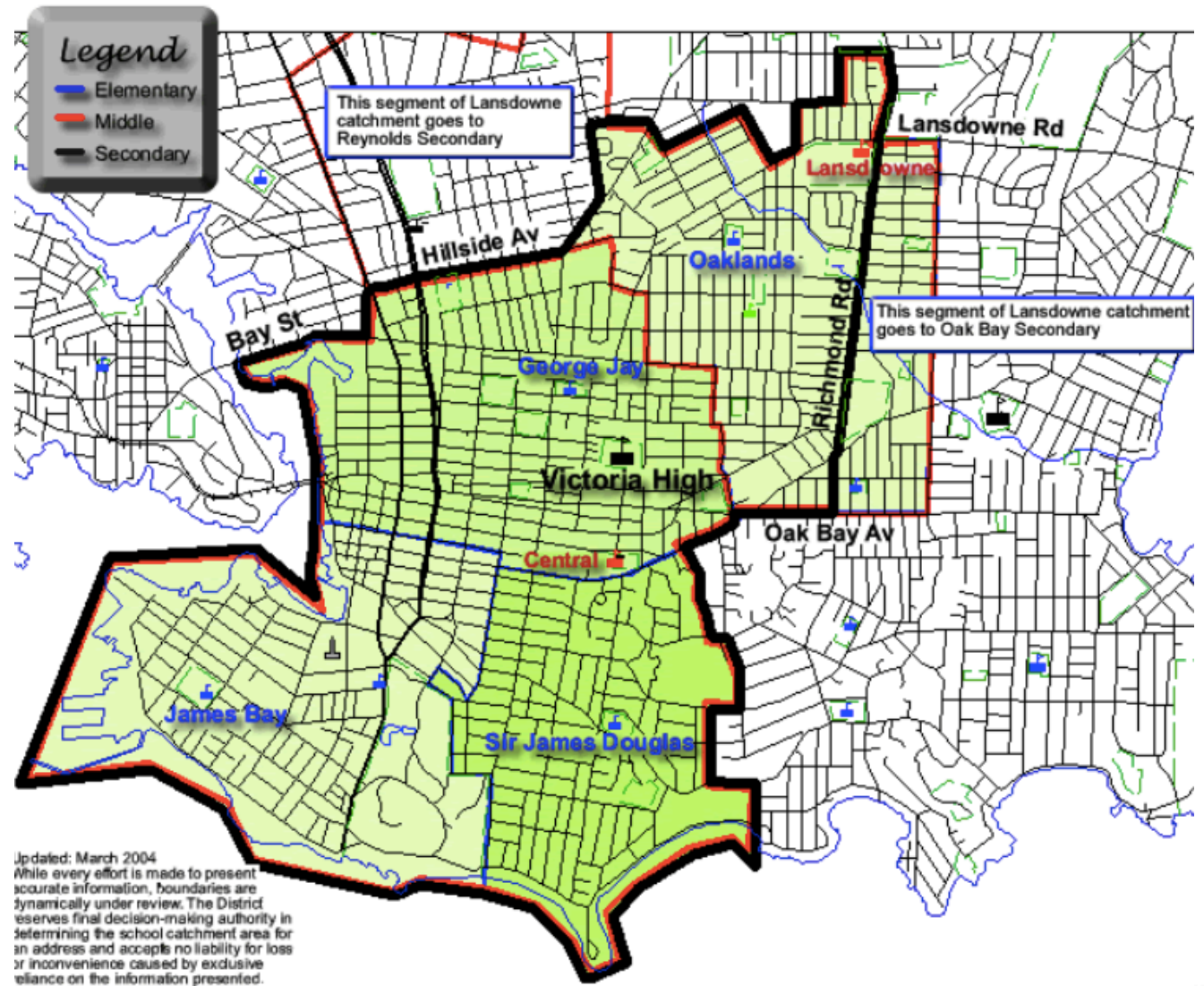


# School Catchment

Due to growth and changing demographics, the District has been re-evaluating catchment boundaries to balance enrolment.

Consultation has occurred during the 2018-19 school year.

*\*Please note this is the current catchment map for Vic High.*



# Considerations

---

- Capital and operating costs
- School capacity and projected student enrolment
- Educational needs
- Community amenities
- Environment
- Heritage
- Community values



# Range of Possibilities

---

- Seismic with upgraded building systems
- Retain the exterior and rebuild interior
- New school for 1000 students

One *Learning* Community



# Public Engagement

- Community stakeholder meetings
- Online survey open for a month
- Staff & Student Sessions
- Two Open Houses at Vic High:
  - Saturday, April 7, 2018, 9 a.m. – 12 noon
  - Wednesday, April 18, 2018, 5 p.m. – 7 p.m.





# What We Heard

- Prioritize student safety
- School needs to support growing student population
- Catchment area students must be able to attend the school
- Architectural Heritage Significance
- Protect the heritage building
- School is seen as Fernwood Landmark
- Increase community access – after hours access, community space, child care
- Environmental considerations
- Improve school amenities

One *Learning* Community

## Victoria High School: *Planning for the Future*



The Greater Victoria School District is planning for the future of Victoria High School. The school has an H-1 seismic ranking, the highest level of priority need.

Victoria High School has been an important institution in our community for more than 100 years. The School District is seeking community input to inform decision-making by the Board of Education about how to best support student learning for the next 100 years.

### Victoria High Open Houses:

<b>Saturday, April 7, 2018</b>	<b>Wednesday, April 18, 2018</b>
9 a.m. – 12 noon	5 p.m. – 7 p.m.
Victoria High Gymnasium	Victoria High Gymnasium

For more information:  
[www.sd61.bc.ca](http://www.sd61.bc.ca)



One *Learning* Community

 [www.sd61.bc.ca](http://www.sd61.bc.ca)

 Greater  
VICTORIA  
School District



# Vic High: Planning for the future

---

- The Board of Education approved a determined preferred option for school in June 2018
- School district submitted seismic options to the Ministry for funding approval
- Project Definition Report was developed to support the District's recommendation



# Preferred Option

---

- The '*Seismic Plus Enhancements (1000) Plus NLC*' Option
  - Retain the exterior of building
  - Enhance interior
  - Upgrades; including new concrete stairwell, mechanical system, new fire sprinkler system
  - Build a two-storey addition on the east side to accommodate 200 more seats
  - Neighbourhood Learning Centre
- Estimated costs = \$73.3 Million

# Additional Upgrades

---

- Upgrades the District would need to cover:
  - Heritage Features (e.g., exterior masonry rehabilitation)
  - Stair Vestibule Upgrades
  - Addition for increased capacity



# Where we are in the process...

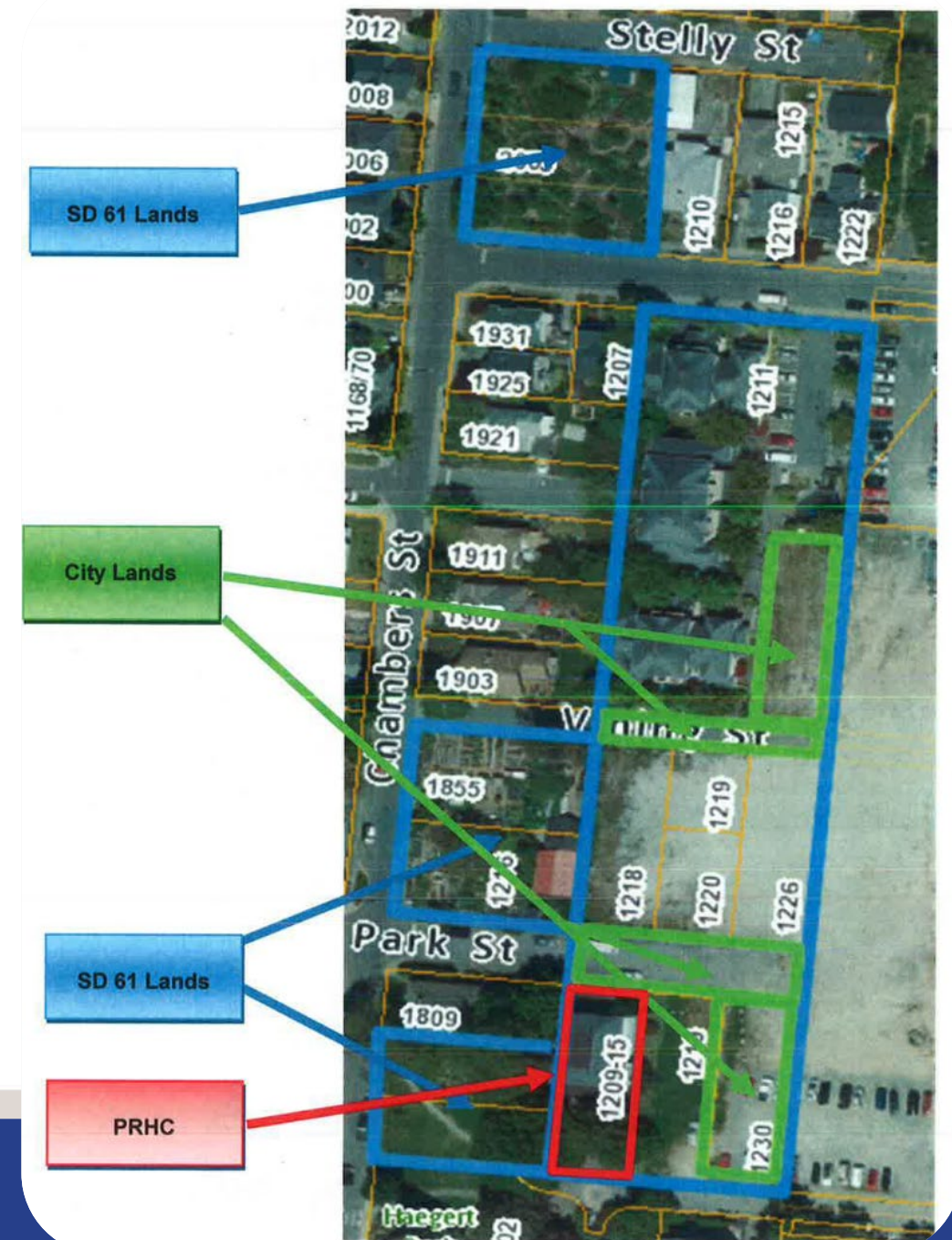
---

- District is waiting to hear from Ministry about funding (\$\$)
- District is seeking ways to move forward with the higher cost seismic project:
  - Potential Disposition of land near the school
  - Potential use of Proceeds of Disposal
- In Fall 2018, the District signed a letter of intention (LOI) with CRHC and the City of Victoria to exchange land.

# Letter of Intent

- SD61 transfer ownership to the City of Victoria
  - Compost Centre, Haegert Park, and Spring Ridge Commons
- City of Victoria transfer to the SD61
  - Two lots including two road closures
- BC Housing transfers Tonto Rosette to SD61
- SD61 becomes sole owner of the development parcel
- SD61 leases the development parcel to the CRHC for a 60 year lease term
- Approved by City of Victoria's Council and SD61 Board in September 2018

One *Learning* Community



# FAQ Questions

---

- Why is the District considering disposition?
- Has the land already changed hands?
- Why didn't the District consult earlier?



# Potential Amenities

---

During the 2018 public consultation, the District heard from students, staff and the community that they desired:

- An Astronomy Deck
- A New track
- Updated spaces for Arts
- Flexibility of Space (e.g. after hours access, Daycare Space,)

*What amenities would you like to see?  
Please leave feedback on comment card.*

# Next Steps

---

- District is waiting to hear from the Ministry on project approval and associated funding.

# Questions & Answer

---

Provide additional feedback on a comment card.

If you have additional enquiries please contact us at:

[Community@sd61.bc.ca](mailto:Community@sd61.bc.ca)