


Victoria High School Safe Learning Spaces

A wide-angle photograph of Victoria High School. On the left is a large, multi-story brick building with a prominent arched entrance. To the right is a modern, single-story building with large glass windows and a distinctive orange-colored roof structure. A paved walkway leads from the foreground towards the buildings, with a person walking away from the camera. A basketball court is visible on the right side of the image. The sky is blue with some clouds.

Presentation to: SD61 School Board
By: Corey Kowal
Date: September 16, 2019

PURPOSE

- To refute the suggestion that the land behind Vic High is surplus.
- To ensure the use of this land is retained for educational purposes



YOU DON'T KNOW
WHAT YOU'VE
GOT TILL
IT'S GONE.

FOR CONSIDERATION & DISCUSSION

- Safety
- Mental health
- Student & staff pride
- Neglected Land Space



“Public schools, which provides some of the same functions as neighbourhood and community parks, are under the greatest threat of change and potential loss of open space.”

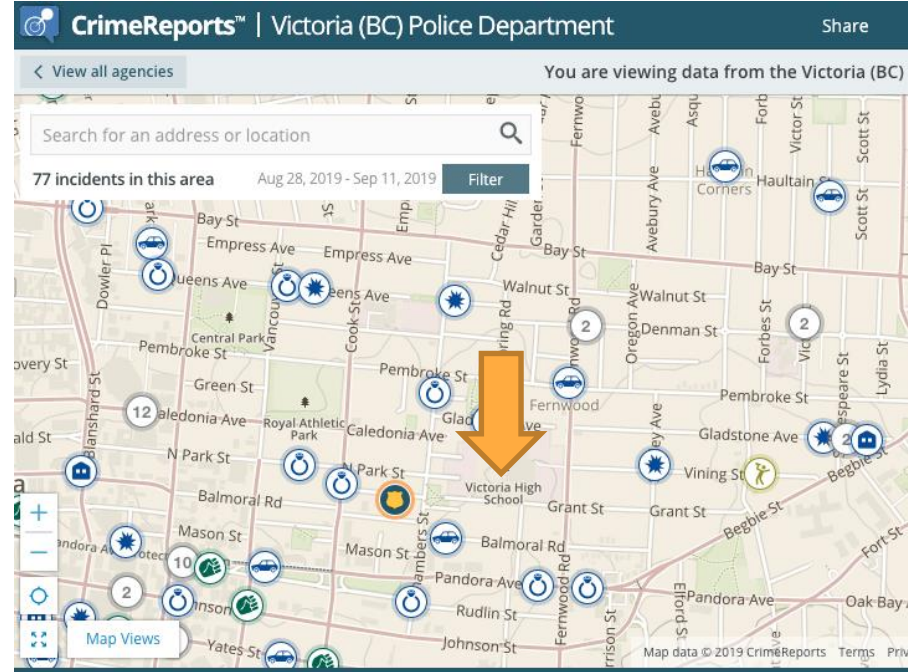
1.0 COMMUNITY SAFETY

Vic High School Students & Staff

- Keep kids safe in an inner-city setting
- ~77 crime related activities reported

Loss of land will:

- Increase student exploration of off-site areas
- Increase staff and student interactions with discordant people in community



1.0 TRAFFIC SAFETY

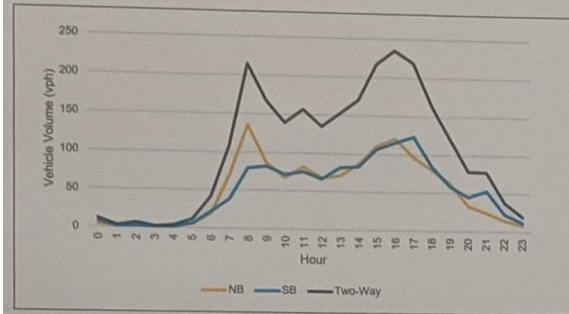


Chambers St.

Grant St.



Chambers Street 24-hr Traffic Profile
weekday, 2019



CHAMBERS ST.

1996 - 1200 vehicles/day

2011 - 1900 vehicles/day

2019 - 2500 vehicles/day

SOURCE: Chambers traffic stats from the CRHC Transportation Study

2.0 MENTAL HEALTH

NATURAL ENVIRONMENT EXPOSURE = HEALTH BENEFITS



SOURCE: [Ref NECR204 www.gov.uk](http://www.gov.uk)

3.0 LAND EQUITY & STUDENT PRIDE

EQUALITY

VS.

EQUITY



EQUALITY = SAMENESS
GIVING EVERYONE THE SAME THING
It only works if everyone starts from the same place



EQUITY = FAIRNESS
ACCESS TO SAME OPPORTUNITIES
We must ensure equity before we can enjoy equality

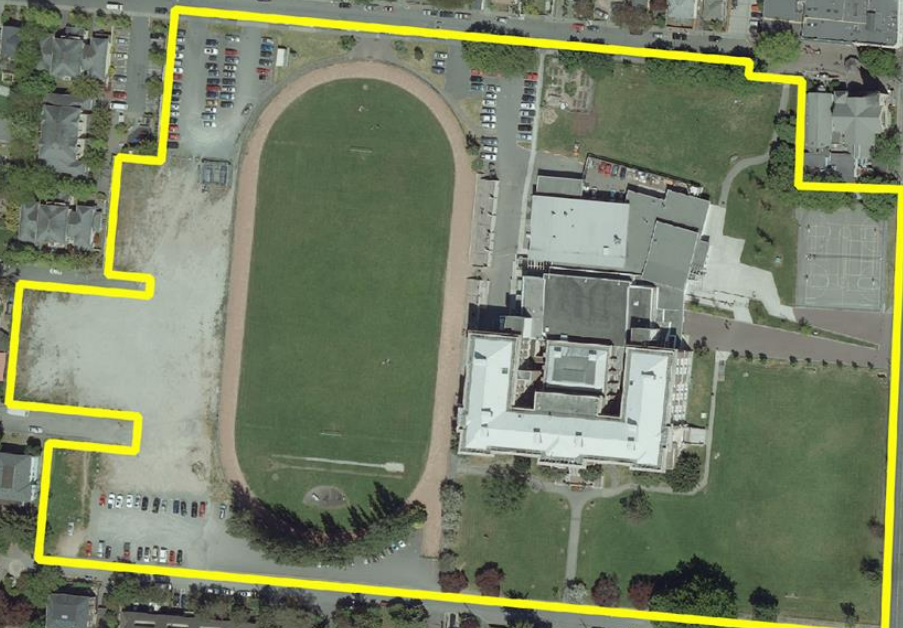
2001

Vic High

0 50 100 m



2017



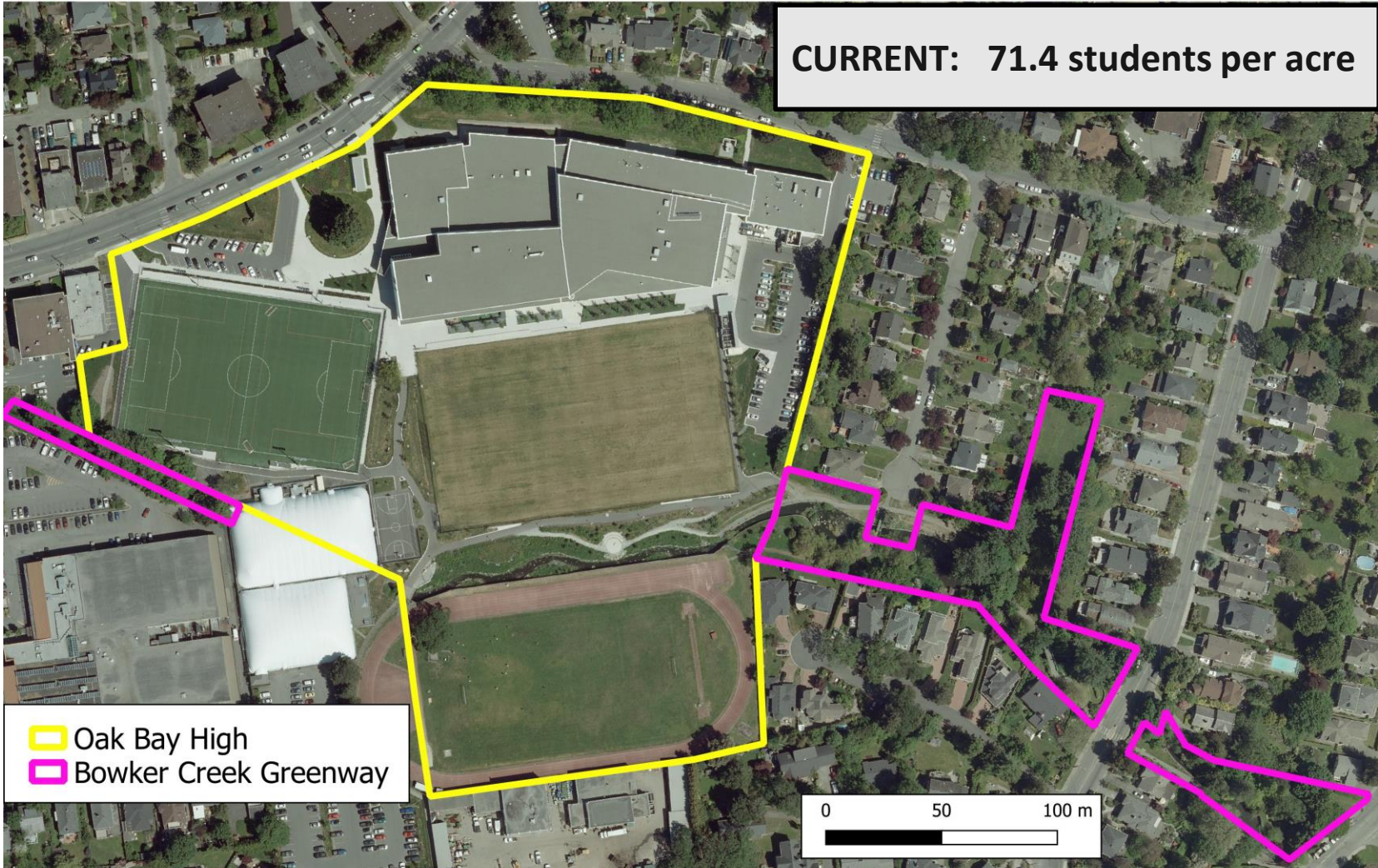
Vic High



PROJECTED: 86 students per acre

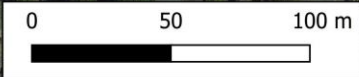
0 50 100 m



CURRENT: 71.4 students per acre





 Oak Bay High
 Bowker Creek Greenway






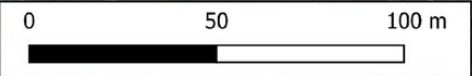
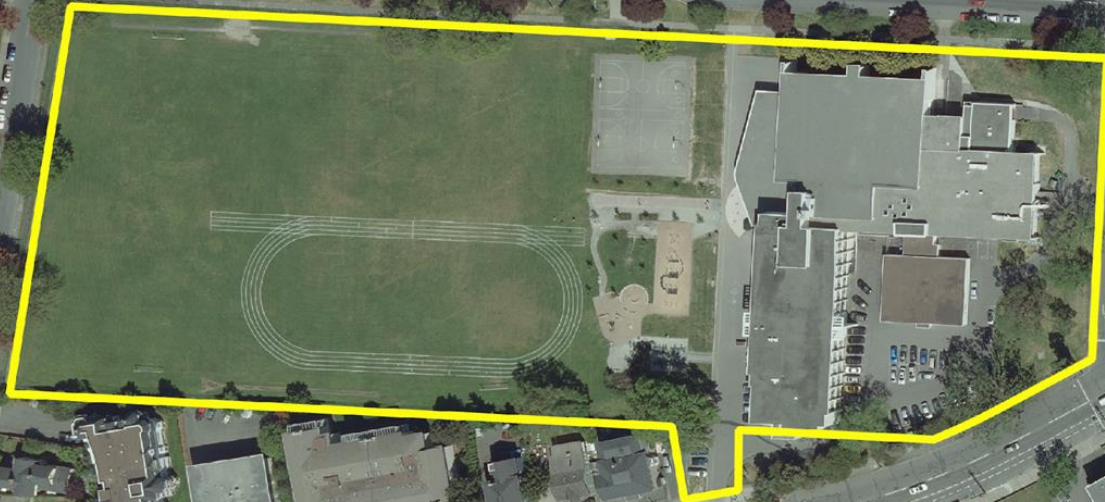
HILLSIDE AVE

BLANSHARD ST

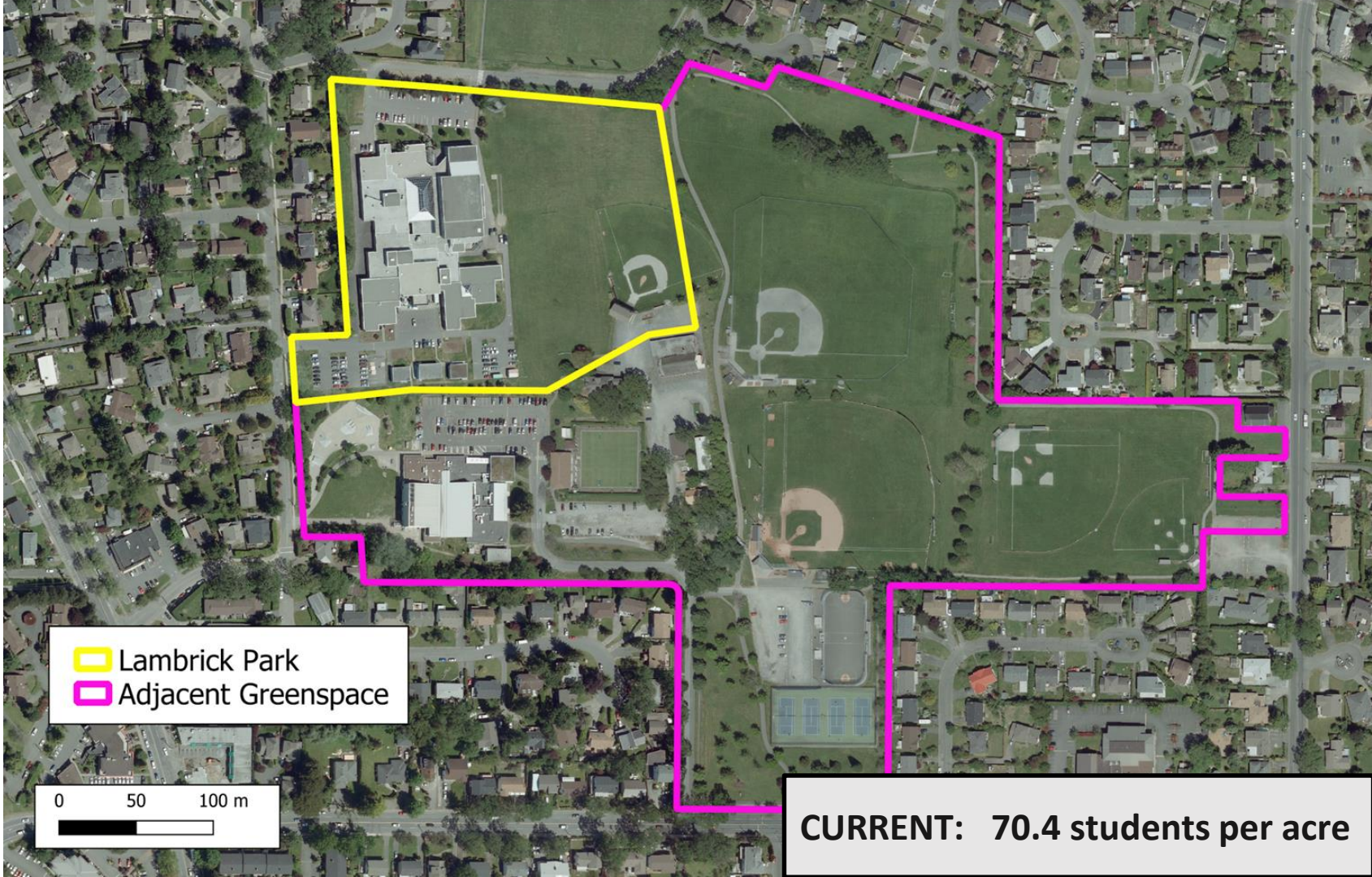
 SJ Willis
 Topaz Park



0 50 100 m


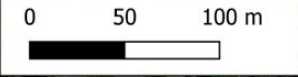
**Esquimalt
High**



CURRENT: 73.0 students per acre



 Lambrick Park
 Adjacent Greenspace



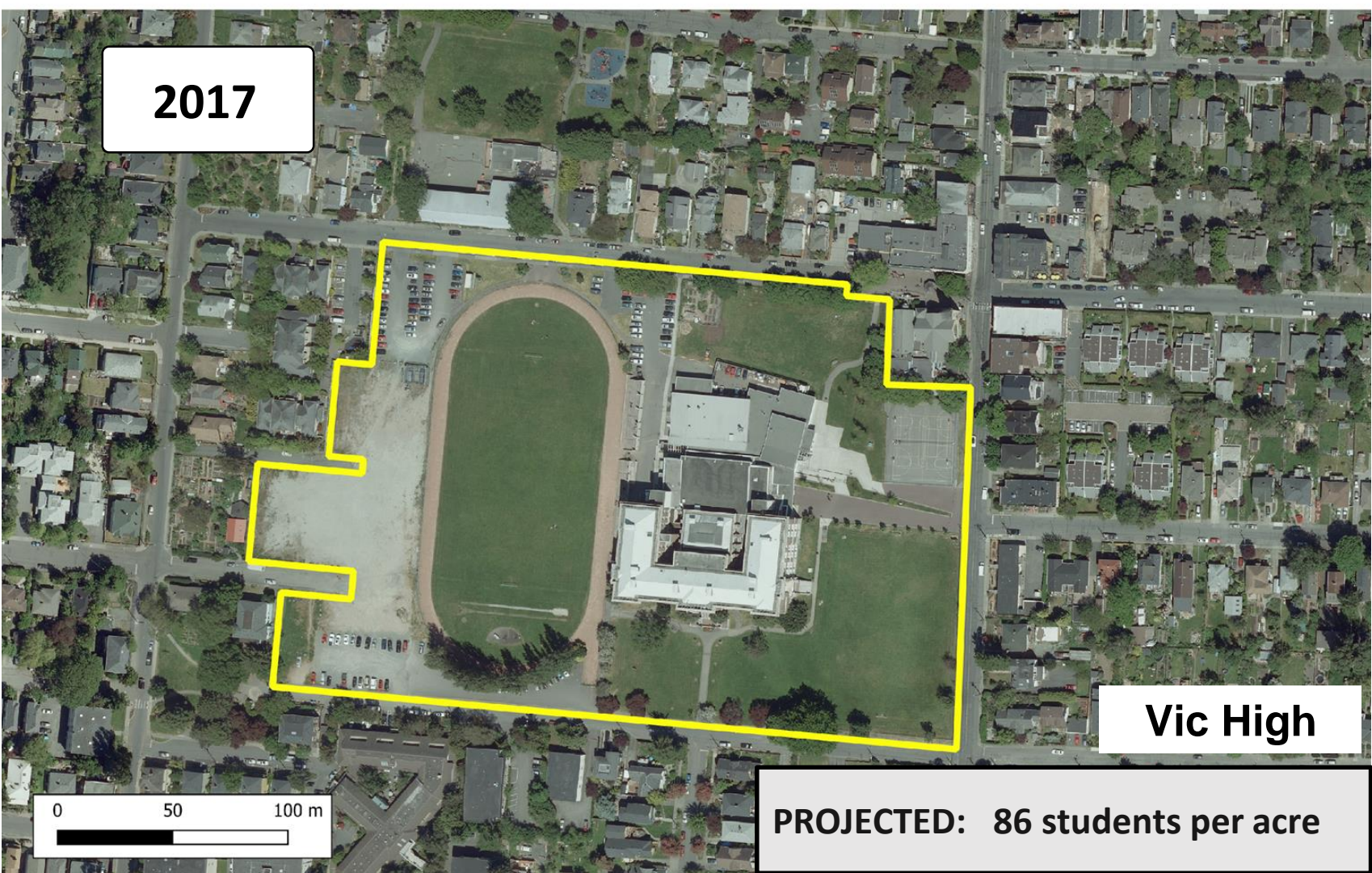
CURRENT: 70.4 students per acre

2017

Vic High

0 50 100 m

PROJECTED: 86 students per acre



4.0 YEARS OF NEGLECT

- Fairey Tech removal 2011
- Remediation plan never materialized
- Community patience mistaken for apathy
- Funding source for SD61
- CRHC opportunity



5.0 CONCLUSION

We need:

- Responsible land use decision-making
- A cohesive site plan for Vic High with its stakeholders
- Equity within our family of high schools
- Recognition that this land is vital to Vic High and to the community

Once the land is gone - it's gone!

