

# Proposed Alternative to Phase 3 SP Catchment

May 2019

# What's the “domino effect”

District staff have indicated that they *can redraw boundaries and address over capacity in schools*

and

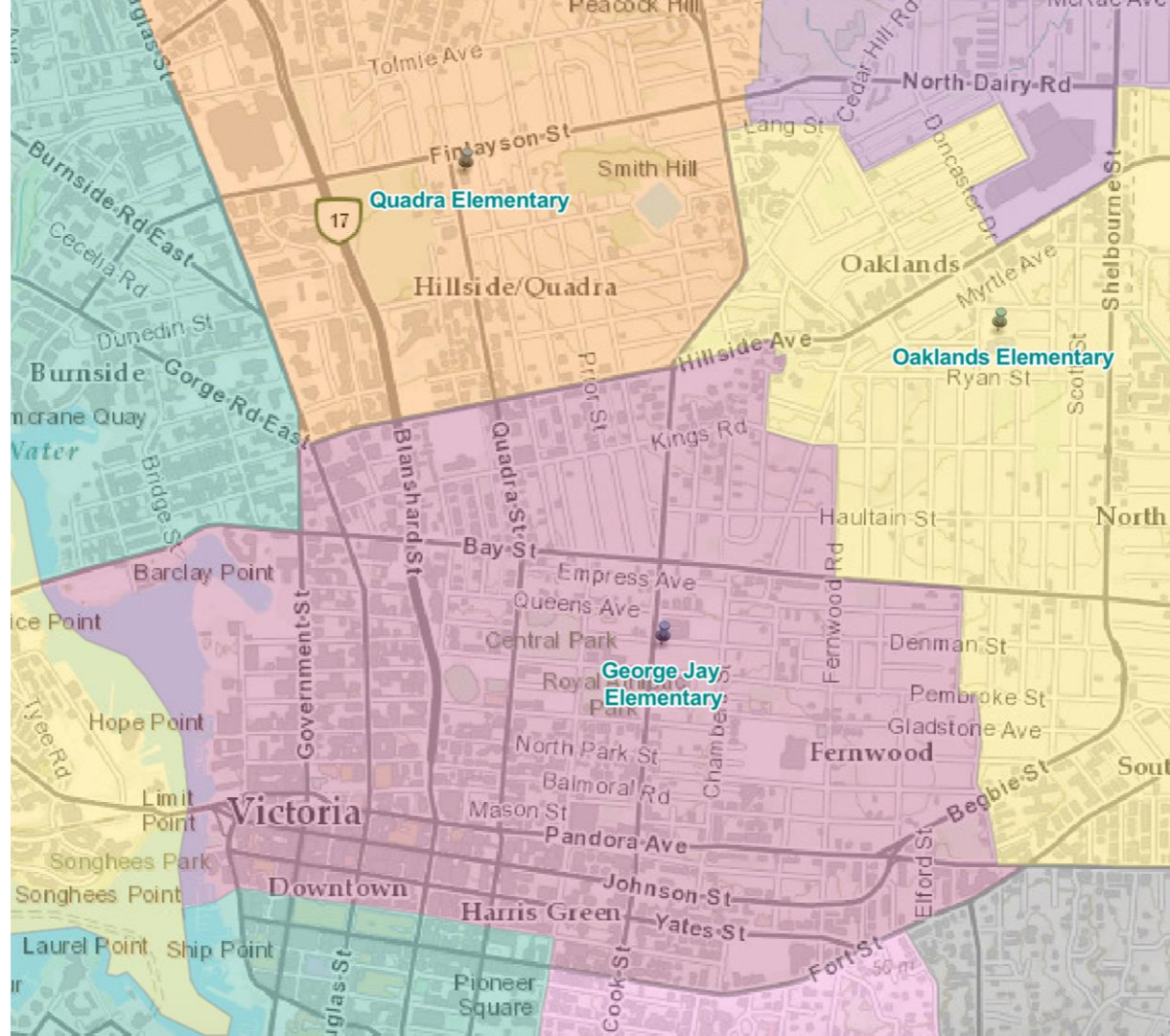
maintain South Park Family School's  
District-wide catchment

A South Park catchment  
is ineffective and  
unnecessary



## Causes of Overcrowding:

- Rapid growth in high density areas with over capacity schools
- Stagnant or declining growth in areas with under capacity schools



# A South Park Catchment

# A South Park Catchment

Exceeds Official Capacity by 2024



# “Right Sized”

- South Park School is too small to alleviate capacity pressures in the George Jay catchment



# A South Park Catchment

	Target Enrol.	Official Capacity	Seats for Growth	Status
JB	182	196	14	FULL
SP	182	196	14	FULL
GJ	-			No impact



Proposed September 20

# Our proposal



# Our proposal meets and exceeds the Phase 3 Proposal

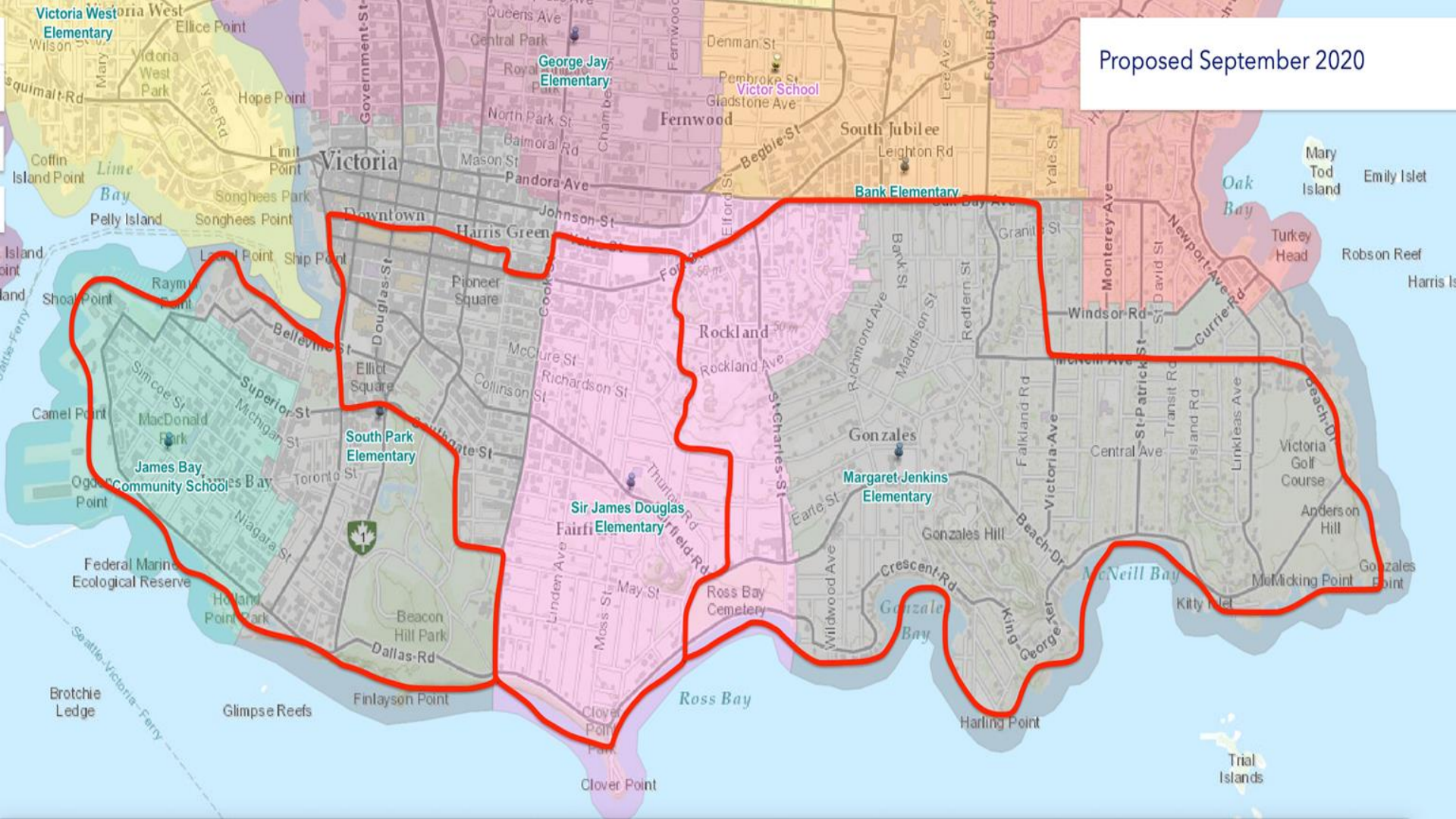
Our proposal:

- Adheres to the the District's principles
- Same targeted enrolment for JB/SJD

And:

- Enhances capacity for growth
- Alleviates overcrowding at GJ
- Shifts enrolment from high density areas to catchments with growth capacity
- Maintains SPFS as a District Program

Proposed September 2020



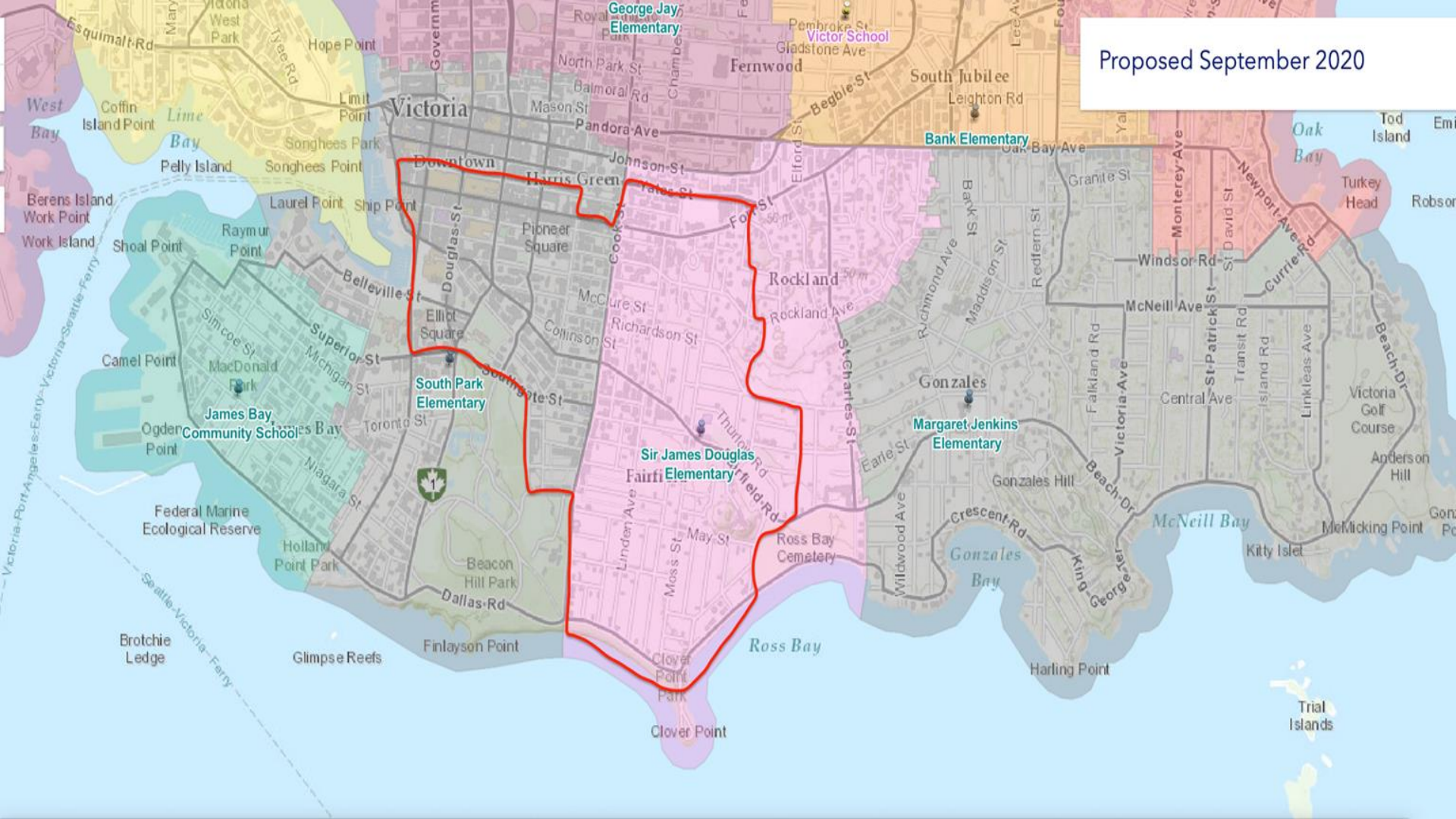
# James Bay

- Targeted enrolment = 182
- Projected students (English) = 222
- Expected transfers to SPFS = 40-45
- **Proposed enrolment remains = 182**



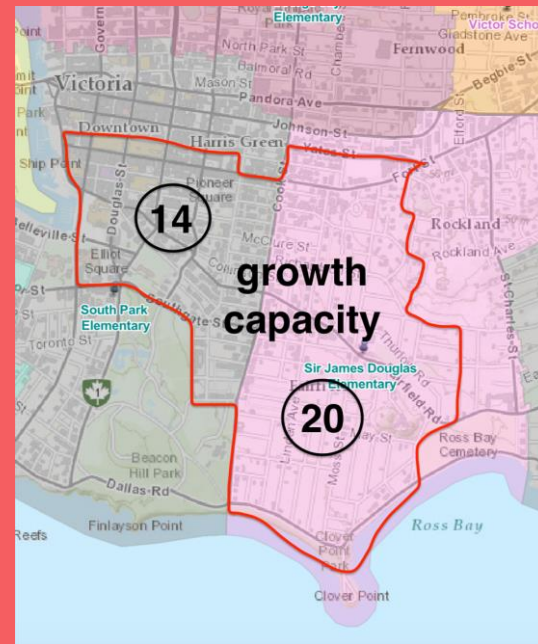


Proposed September 2020



# Sir James Douglas

- Official capacity= 460
- Targeted enrolment = 426
- Projected students = 476
- Expected transfers to SPFS = 30-35
- # students shifted to MJ = 49-54
- **Projected enrolment = 426**



# Margaret Jenkins

- Official capacity = 487
- Targeted enrolment = 448-462
- Projected enrolment = 410-420
- # students SJD to MJ = 49-54
- **Projected enrolment = 464-474**

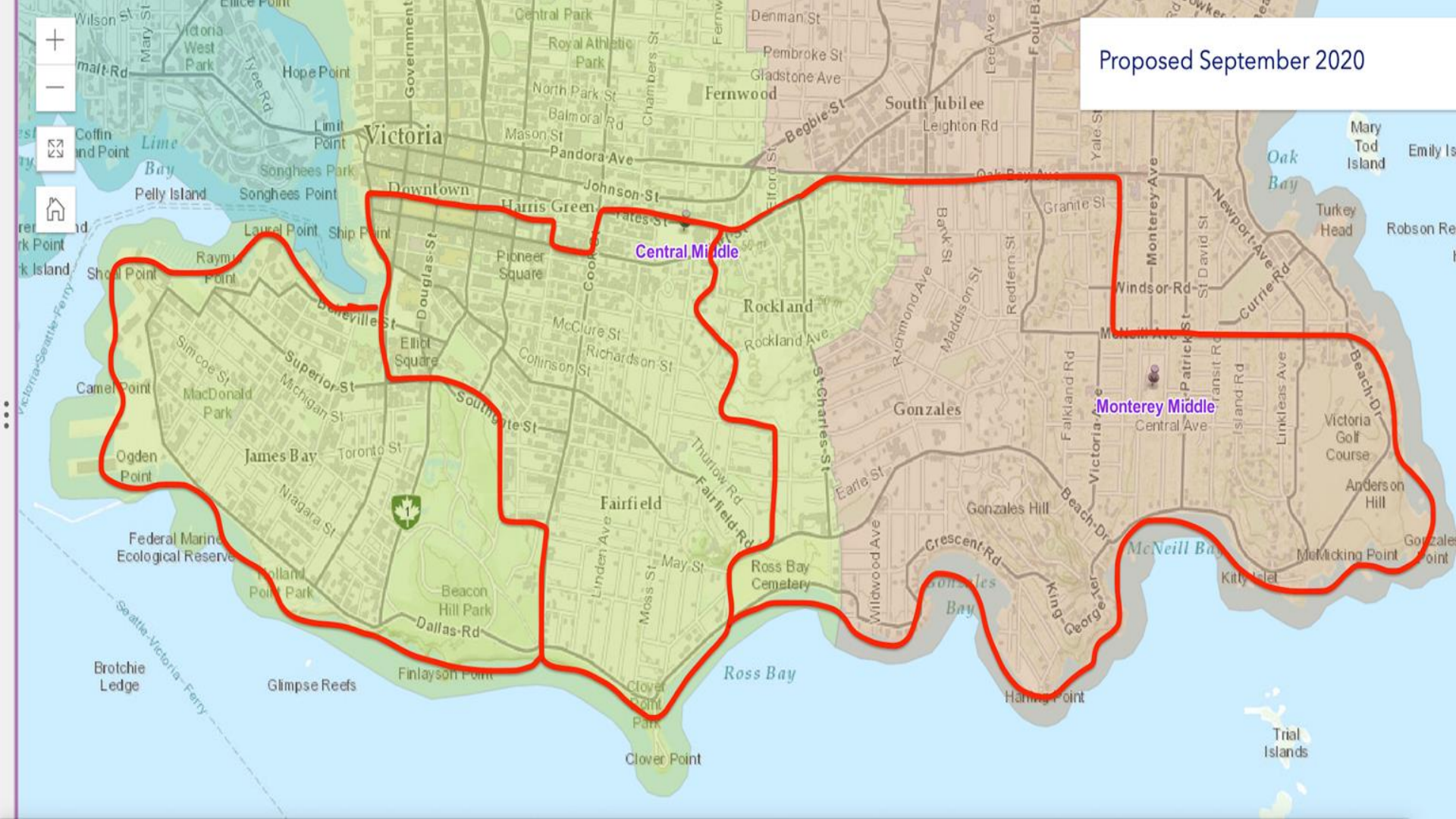


- “Right Sized” catchments
- Reduced enrolment for Central
- Additional capacity for growth in GJ





Proposed September 2020



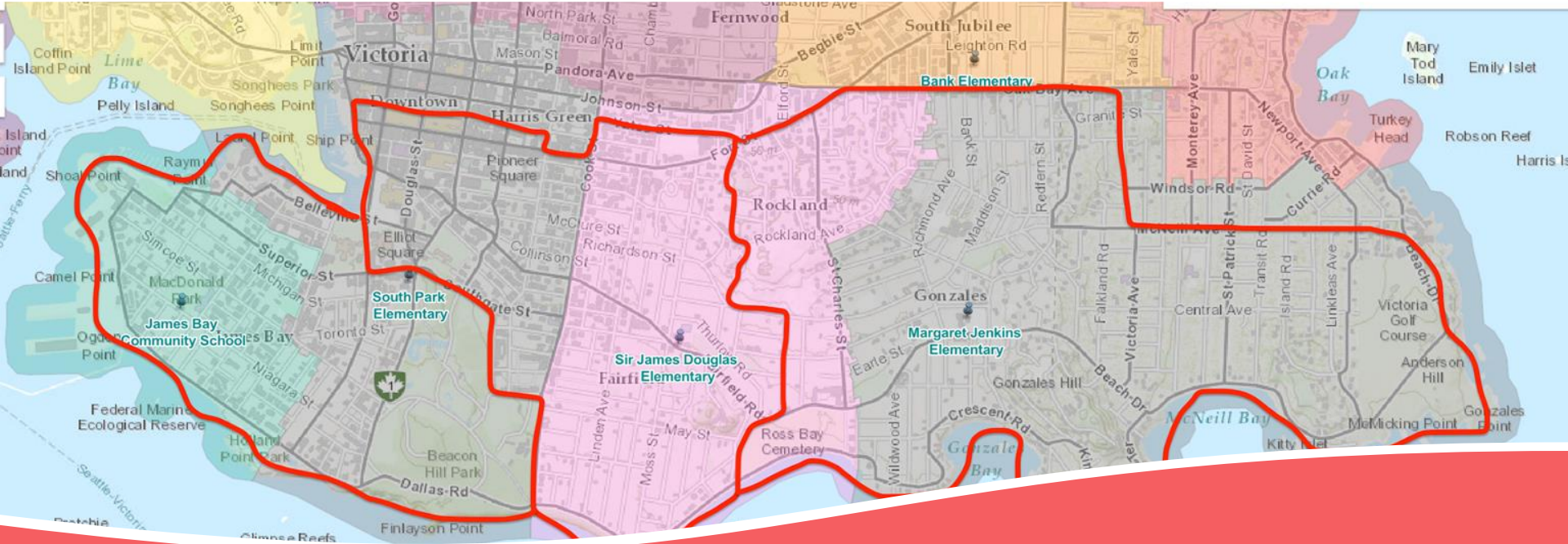
- “Right Sized” catchments
- Reduced enrolment for Central
- Additional capacity for growth in GJ



# SP Catchment Vs. District Wide – Impact

	Phase 3 - SP catchment	SPFS District Wide
JB target enrol.	182	182
SJD target enrol.	440	426
SP target enrol.	182	
GJ enrol.	-	Reduce (-29)
Central enrol.	-	Reduce (-54)
Monterey enrol.	-	Add (+54)
Avail. Spaces for growth JB/SJD/SP	48	150





**South Park Family School Can Maintain its District-Wide Access**