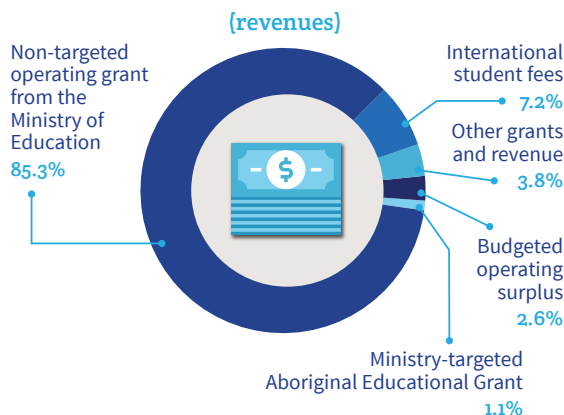


Snapshot 2019-2020

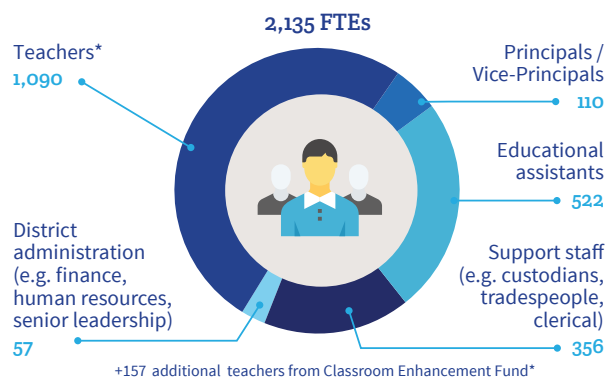
One *Learning* Community

Operating Budget: \$208.2 million

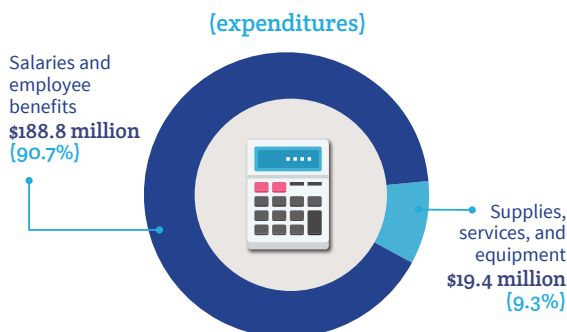
Where the money comes from



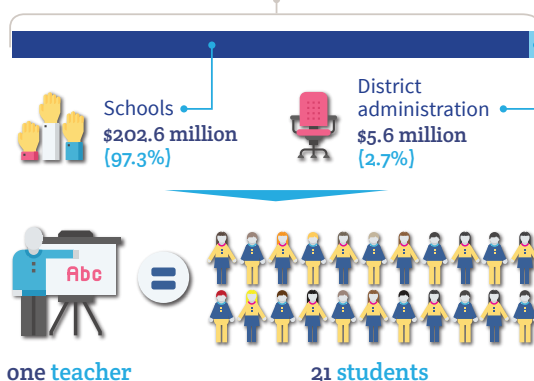
Our staff team



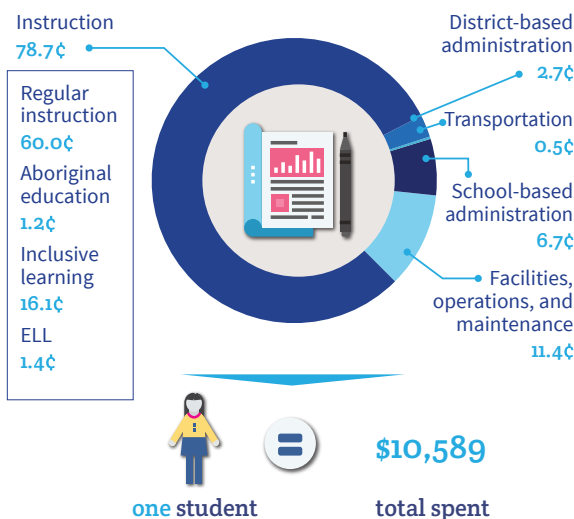
Where the money goes



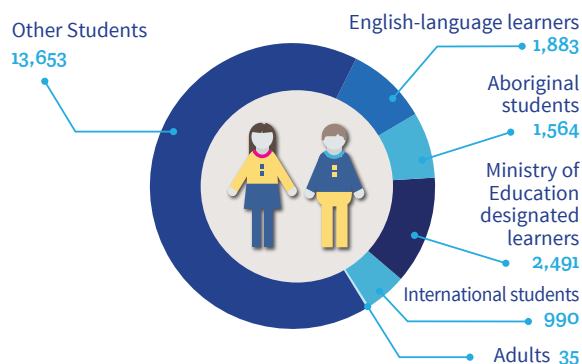
\$208.2 million operating budget



How each dollar is spent



Our student population = 20,616



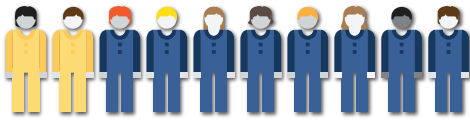
Enrolment is projected to grow over the next 10 years

French immersion

Bonjour!

4,000 students

are enrolled in French immersion



That's **2** out of every **10** students.

Inclusive learning



\$33.5 million (in 2019-2020)

Increase of \$1.8 million from 2018-2019



\$1.1 million

Fluid and flexible learning spaces in schools

Graduation rates



88% graduating

Graduation levels are above provincial average for the past three years

Careers and pathways



6,300 students

participated in pathways & partnerships programs in 2018-2019

New class size composition



\$18.3 million

to restore collective agreement class size and composition language in 2018-2019 resulting in 120 additional classes

Our schools



- 27** Elementary schools
- 10** Middle schools
- 7** Secondary schools
- 1** Continuing/alternate education centre
- 1** School for most complex student needs

Planned capital investments



\$3.9 million

Roofs, electrical and mechanical upgrades, carpentry, and painting



\$1.5 million

roof and energy upgrades at Richmond Elementary



\$700,000

in windows and floor upgrades at Mt. Douglas Secondary and Lansdowne Middle



\$210,000

to build universally accessible playgrounds



\$266,000

for new buses

We anticipate additional capital funds for seismic upgrades at a number of sites including Victoria High School

Engaging our community



30+

Public Board of Education and committee meetings



178,500

Website visitors monthly



45

Parent Advisory Councils



Boundary Review

5,100+ community members participated in the survey
400+ attended the open houses



Providing public education to students in:

6 municipalities

(Victoria, Oak Bay, Esquimalt, View Royal, Saanich, and Highlands)

2 First Nation territories

(Esquimalt First Nation and Songhees First Nation)



Greater
VICTORIA
School District

sd61.bc.ca

Greater Victoria School District No. 61

556 Boleskine Rd, Victoria, BC, V8Z 1E8

250.475.3212 | **f** **t** **@sd61schools**

Our Mission:

We nurture each student's learning and well-being in a safe, responsive, and inclusive learning community.

Our Vision:

Each student within our world-class learning community has the opportunity to fulfill their potential and pursue their aspirations.