

My son is in kindergarten at Oaklands
and my daughter will start K in 2020
I will have to send them to 2 different
schools? Please tell me she will
have sibling priority to go to
Oaklands and not have to go to
Victor? [redacted] contact info on back →

Bring th

What do you think about the proposed boundaries?

- schools of choice should be kept as such; other
boundaries can be shrunk to deal with overcrowding issues.

So if you have schools ^{or shifted} A B and C, and A and B are over-

What are some other neighbourhood-specific considerations? Crowded and C

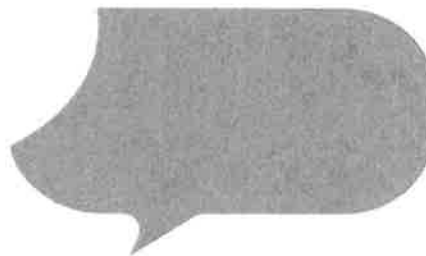
is not, you
shrink A's
catchment, move
B's towards A
and shrink it,
and expand C's

Any other comments?

A ~~strong~~ healthy school district should have
many schools of choice (or even all schools
of choice) to reflect a diverse population



SD61 Catchment Boundary Review



*Don't forget to leave
your feedback!*

Bring this comment form to the open house and share your thoughts.
Please hand in the form before you leave.

What do you think about the proposed boundaries?

Look Fair

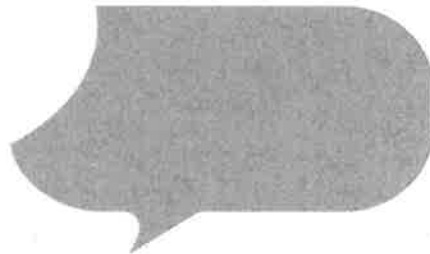
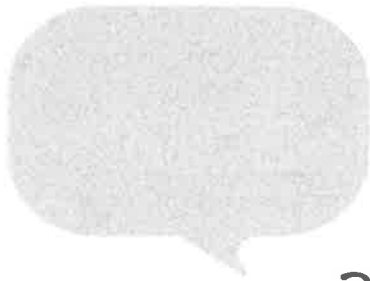
What are some other neighbourhood-specific considerations?

Any other comments?

*RICHMOND — How will the Kids do their exploratories?
- Will the weather affect their schedules?*



SD61 Catchment Boundary Review



*Don't forget to leave
your feedback!*

Bring this comment form to the open house and share your thoughts.
Please hand in the form before you leave.

What do you think about the proposed boundaries?

I understand that certain schools are full however taking away schools of choice is not the answer.

What are some other neighbourhood-specific considerations?

Cloverdale Traditional School is a culturally and economically diverse school that emphasizes heightened parental involvement which results in a stronger collective and inclusive community - why take that away??

Any other comments?

There are better options to solve the overcrowding, they need to be explored.



SD61 Catchment Boundary Review



*Don't forget to leave
your feedback!*

Bring this comment form to the open house and share your thoughts.

Please hand in the form before you leave.

What do you think about the proposed boundaries?

I am very disappointed in the proposed removal of elementary schools of choice (especially South Park) without proper consultation. It seems to me that the SD's lack of

What are some other neighbourhood-specific considerations?

questions in your survey is an indication that a decision had been made before the survey went out. Can we not look at

Any other comments?

options that might include elementary schools of choice that might also address overcrowding? CONSULT FAIRLY WITHOUT BIAS!



SD61 Catchment Boundary Review

***Don't forget to leave
your feedback!***

Bring this comment form to the open house and share your thoughts.
Please hand in the form before you leave.

What do you think about the proposed boundaries?

Our daughter got accepted into Cloverdale Traditional School for Kindergarten 2019/2020. As parents, we took great care and consideration into making the decision relating to our children. We believe our daughter will thrive in the

What are some other neighbourhood-specific considerations?

More traditional school ~~and~~ / school of choice.

school of
choice program. →

Any other comments?

If changes are made to be made to improve the learning environment for our children, more emphasis should be put on how resources are used efficiently and effectively. More efforts to attract qualified teachers/educators to work and stay in our community.

→ (continued from front)

While she will be able to continue at Cloverdale up to Gr. 5, it disappoints us to think that the school will no longer be a traditional school. During our ~~the~~ research of options of Kindergarten programs, we have heard ~~so~~ so many great things about the traditional program. Why take that away from the community? Instead maybe more ~~traditio~~ schools should offer the traditional program.

Open House - Key Questions:

***We need these (and other!) questions to be asked by South Park supporters at tonight's meeting. Please indicate if there is a question you would like to ask. Questions do not have to be asked in a particular order.**

***Also - Help us prioritize questions by putting a star next to the questions you think are important**

Question	Asked By	Response / Follow up
<p>IMPACT: Neither the published proposal documents nor the presentation made by Mark Walsh at the Board meeting on Jan 28 contain any mention of the impact of eliminating Elementary Schools of Choice. What does it mean to the District to lose these two flagship educational programs? How exactly did the District consider and justify the loss that is implied in this decision? In particular, please describe the steps used by the School District to evaluate the impact of the closure of the South Park elementary school of choice on students, parents, staff, community and the district as a whole?</p> <p><i>*I want to ask this question: (Name)</i> <i>*I think this question is important: *</i></p>		
<p>SURVEY: Please explain the steps taken and process covered to create the questions included and excluded from the survey used to inform this boundary proposal. It is notable that questions about access to District Programs of Choice referred to either French Immersion or High School Programs of Choice. Why were no questions about preference for and support of elementary schools of choice included in the survey? Is this not a clear bias against elementary non french schools of choice by effectively excluding all data by NOT asking these questions?</p>		

	<p><i>*I want to ask this question: (Name)</i> <i>*I think this question is important: *</i></p>		
	<p>ALTERNATIVES: What alternative solutions were considered that involved preserving elementary schools of choice? Why were these alternative solutions rejected?</p> <p><i>*I want to ask this question: (Name)</i> <i>*I think this question is important: *</i></p>		
	<p>VALUE OF CHOICE: The quantitative survey results suggest that access to programs of choice is important to the respondents. Within the survey, these questions related to French Immersion or High School programs of choice while no questions about Elementary Schools of Choice were asked. Given that data was not collected on the importance of elementary schools of choice are valued, how can the district justify eliminating them? In fact, in his presentation to the Board on Jan 28, Mr Walsh stated that the survey results reflected that people "... want to be close to our catchment school in elementary and middle, but we want access to those programs [of choice, in highschool]" - given the absence of questions about choice at the elementary level, what data exists to support the notion that respondents desired this access to educational choices at high school level but not at the elementary level?</p> <p><i>*I want to ask this question: (Name)</i> <i>*I think this question is important: *</i></p>		
	<p>Please describe the relevant feasibility studies, assessments of alternatives relating to the decision to close South Park Family School as a program of choice, and please provide me with a copy.</p> <p><i>*I want to ask this question: (Name)</i> <i>*I think this question is important:</i></p>		

<p>School District Regulation 110 on Equity defines equity as having fair and equal opportunity in accordance to individual's needs, to participate in and enjoy the benefits of an educational program. The regulation obligates the School District to use equity as the lens through which it makes decisions regarding the distribution of financial resources, human resources and programming? Did the School District analyse its catchment boundary proposal in light of its obligations under Policy 110, especially in the context of closing of Victor, South Park and Cloverdale elementary at the same time as committing to expand early French immersion access? Please provide me with a copy of the analysis, including any special needs assessment for the district.</p> <p><i>*I want to ask this question: (Name)</i> <i>*I think this question is important:</i></p>		
<p>School District Policy 5119.5 Student Retention (Preventative/Remedial) places emphasis on both student services and student retention, and states that preventative strategies be developed and utilised. This issue is pressing given the underreported practice of excluding children with disabilities from schools. South Park Family Schools plays a significant part in student retention at the elementary level by serving a portion of the population who lack trust in public schools, who consider home-schooling as a viable alternative, and who turn to South Park as a last resort after having unsuccessful experiences in other schools. Has the School district analysed the proposal to close South Park Family School's educational program of choice through the lens of Policy 5119.5?</p> <p><i>*I want to ask this question: (Name)</i> <i>*I think this question is important:</i></p>		

	<p>District Policy 5131.4 Substance Abuse states that the Board shall encourage and support the early intervention into problems of substance abuse among students through the utilisation of school as well as community resources. One important preventative factor in preventing future substance abuse and mental health concerns is to have safe and caring adults at school to which kids can turn to if they experience difficulty. South Park Family School, its philosophy predicated on active parent involvement sets a clear expectation in the students that there are safe and caring adults at school, which expectation endures throughout the child's education. Has the School District analysed the proposal to close the educational program of choice at South Park Family School through the lens of District Policy 5131.4?</p> <p><i>*I want to ask this question: (Name)</i> <i>*I think this question is important:</i></p>		
	<p>In Policy 6120.1 Programs of Choice the Board recognises its obligation, consistent with the School Act, to provide an educational program for all students of school age, and clearly states that it is the goal of the Board to offer programs promoting excellence in instruction and optimal achievement for all students. South Park has traditionally had a role in fostering an environment for more experiential learners. South Park Family School has for the last 45 years been a leading school for the development of new programs and strategies for the progress of excellence in education in Victoria as a result of its culture of trust between parents, students and children. The decision to leave sports, challenge and French programs of choice unchanged would seem to suggest that the School District is valuing the needs of secondary, middle learning over the needs of elementary school learners. Has the School District</p>		

	<p>analysed the proposal to close the educational programs of choice at South Park Family School, Victor School, and Cloverdale Traditional School, while at the same time as expanding the early French immersion program of choice, through the lens of District Policy 6120.01?</p> <p><i>*I want to ask this question: (Name)</i> <i>*I think this question is important:</i></p>		
	<p>1. What was the breakdown of respondents for the survey by catchment, parent/students, others?</p> <p><i>*I want to ask this question: (Name)</i> <i>*I think this question is important:</i></p>		
	<p>1. The Barager projections for the period 2017 – 2033 suggest that enrolment in elementary schools will peak in 2020, in middle schools in 2024, and in high school in 2027, and decrease from then. It seems a shame that portables couldn't be used to relieve the pressures on the elementary schools projected over the next year. Are enrolment projections being overblown? Please provide us with copies of all projections models created for the elementary school new catchment boundary proposal.</p> <p><i>*I want to ask this question: (Name)</i> <i>*I think this question is important:</i></p>		
1.	<p>The qualitative responses to the District's survey show that our greater community considers socio economic diversity in schools as a core value. The catchment model presented by the school district favour home owners who can afford to live in affluent neighbourhoods. South Park Family School and Cloverdale Traditional school are accessible to individuals across the district, and as a result, are more socio-economically diverse. Has the School</p>		

	<p>district considered the impact of the proposed changes from the perspective of the socio-economic diversity of our school district?</p> <p><i>*I want to ask this question: (Name)</i></p> <p><i>*I think this question is important:</i></p>		
1.	<p>Policy 3711 sets out a clear process regarding School Closures, and defines School Closure as a significant realignment of educational programs and states that it will not be considered for a school that has a high level of structured involvement in the community. Why was the process set out in Policy 3711 not followed with respect to Victor, Cloverdale and South Park?</p> <p><i>*I want to ask this question: (Name)</i></p> <p><i>*I think this question is important:</i></p>		
1.	<p>Did the School District consider the extent to which the overcrowding at George Jay elementary school is as result of the District's choice to expand the early French Immersion program there?</p> <p><i>*I want to ask this question: (Name)</i></p> <p><i>*I think this question is important:</i></p>		
1.	<p>Has the District considered expanding the number of district-wide Elementary Schools of Choice as an alternative solution to catchment challenges? If not, why has this not been considered given the success of the existing schools of choice? In the case of the highly successful Coastal Kindergarten program the District has been quoted as saying the reason the programs were ended was because the demand was too high. Is the District doing the same here? Choosing to get rid of schools of choice because lots of people would like to go to them, rather than seeing that as a sign that more schools of choice should be created?</p> <p><i>*I want to ask this question: (Name)</i></p>		

[illegible]



SD61 Catchment Boundary Review

*Don't forget to leave
your feedback!*

Bring this comment form to the open house and share your thoughts.
Please hand in the form before you leave.

What do you think about the proposed boundaries?

KEEP ELEMENTARY SCHOOLS
OF CHOICE OPEN CATCHMENT
+ PRESERVE UNIQUE PROGRAMS

What are some other neighbourhood-specific considerations?

WHY ARE OTHER CATCHMENTS
NOT BEING CHANGED? (WILLOWS?)

Any other comments?

THIS PUBLIC CONSULTATION
PERIOD IS CRIMINALLY SHORT!



SD61 Catchment Boundary Review



*Don't forget to leave
your feedback!*

Bring this comment form to the open house and share your thoughts.
Please hand in the form before you leave.

What do you think about the proposed boundaries?

Not happy with the proposal for elementary schools. Schools of choice play a valuable role in the district for children + families. Would love to see if they have any other ideas to address the problems.

What are some other neighbourhood-specific considerations?

George Jay was low enrollment so French Immersion was introduced and now they're experiencing crowding. To alleviate the pressure on George Jay, South Park can become a catchment school ... I cannot support French Immersion

Any other comments?

Any other ideas to solve these problems? Programs of choice over special programs at schools of choice!
Would have loved to see a proposal that offered an option A + an option B.
I don't support the proposal to eliminate schools of choice in Victoria



SD61 Catchment Boundary Review



***Don't forget to leave
your feedback!***

Bring this comment form to the open house and share your thoughts.
Please hand in the form before you leave.

What do you think about the proposed boundaries?

as a parent of a child in South Park Family School, I oppose the removal of its Designation as a program of choice.

What are some other neighbourhood-specific considerations?

Hopefully there is another option to accommodate the overflow of the 3 schools at capacity. South Park alleviates some overflow of these schools as 1/2 of our student body are from James Bay Elementary, Sir James Doug + George Jay

Any other comments?

Please continue, and add more programs of choice for Elementary students. They are of value to the district, and community.



SD61 Catchment Boundary Review

***Don't forget to leave
your feedback!***

Bring this comment form to the open house and share your thoughts.
Please hand in the form before you leave.

What do you think about the proposed boundaries?

I think that it is sad that you plan change South Park school from a very valuable Family school to place where there is no obligations or opportunities for parents to contribute.

What are some other neighbourhood-specific considerations?

The fact that our address is a ^{safe} ten minute walk from South Park, but future people will not have an opportunity to go there.

Any other comments?

South Park Family School is a very special place, please do not ruin it for future generations.



SD61 Catchment Boundary Review



*Don't forget to leave
your feedback!*

Bring this comment form to the open house and share your thoughts.
Please hand in the form before you leave.

What do you think about the proposed boundaries?

The removal of schools of choice can't be an option that should even be on the table.

What are some other neighbourhood-specific considerations?

Any other comments?

The lack of other options considered other than shutting down schools and destroying communities is shocking. This cannot be the only solution. We need to get creative and KEEP CHOICE Schools in our city. The wait lists show how much ppl want them. Listen.



SD61 Catchment Boundary Review

*Don't forget to leave
your feedback!*

Bring this comment form to the open house and share your thoughts.
Please hand in the form before you leave.

What do you think about the proposed boundaries?

It is shocking and inappropriate that losing schools of choice has not been discussed or acknowledged.

What are some other neighbourhood-specific considerations?

Losing schools of choice affects all districts. And the entire community

Any other comments?



SD61 Catchment Boundary Review

*Don't forget to leave
your feedback!*

Bring this comment form to the open house and share your thoughts.
Please hand in the form before you leave.

What do you think about the proposed boundaries?

What are some other neighbourhood-specific considerations?

I am very disappointed with the way proposed changes were presented at this meeting (Feb 6). There should have been an open public meeting with a formal, verbal presentation with opportunity for questions.

Any other comments?

- Outline ① The history of why this is being done
② Proposal(s) for changes to I.F. need at least three proposals. ③ Comments from individuals on the proposals
④ What options will go back to the Board.*



SD61 Catchment Boundary Review

*Don't forget to leave
your feedback!*

Bring this comment form to the open house and share your thoughts.
Please hand in the form before you leave.

What do you think about the proposed boundaries?

I don't want Victor school, S.P. school
or Cloverdale to ~~be~~ have boundaries.

What are some other neighbourhood-specific considerations?

Schools which are closed should
be opened. Schoolboard should
pressure govt to build new schools.

Any other comments?

The ~~re~~ proposal was sent out without
considered opinion. More research is
needed.

SD61 Catchment Boundary Review



***Don't forget to leave
your feedback!***

Bring this comment form to the open house and share your thoughts.
Please hand in the form before you leave.

What do you think about the proposed boundaries?

The changes to the boundaries will not
alleviate the over burden on the existing schools

What are some other neighbourhood-specific considerations?

Some families want the choice to send their children
to schools outside of the catchment. ~~Schools~~
Families have very few rights in public school, don't take
programs of choice at the elementary levels away.

Any other comments?

Don't destroy a successful program(s)
in a knee-jerk response to a bigger problem.
Eliminating South Park Family School & Cloverdale Traditional
will not help over populations in other schools.



SD61 Catchment Boundary Review



***Don't forget to leave
your feedback!***

Bring this comment form to the open house and share your thoughts.
Please hand in the form before you leave.

What do you think about the proposed boundaries?

I understand boundaries need to change but it feels like you are forcing us to rubber stamp something you already decided. Move The International students and open up Uplands. For our family Gonzales going to Landsdowne for French makes no sense.

What are some other neighbourhood-specific considerations?

There are no direct bus routes from South Oak Bay to Landsdowne - There is no safe direct ~~bus~~ bike path. It's NOT a safe rot to school! Put French in Moncton. Taking 2 buses to and from school in grade 6 makes no sense. Will there be school buses?

Any other comments?

It appears a class for LFI will open up in Central. Please consider grandparenting in the 3-6 kids in South Park who are now considered out of catchment. They are being separated from their cohort. The kids sitting next to them in class today will do LFI and my kid is shut out at a vulnerable age.



SD61 Catchment Boundary Review

*Don't forget to leave
your feedback!*

Bring this comment form to the open house and share your thoughts.
Please hand in the form before you leave.

What do you think about the proposed boundaries?

I think the schools of choice need to be valued and kept. It is crazy to destroy systems that work so well at addressing the needs of unique students

What are some other neighbourhood-specific considerations? & communities

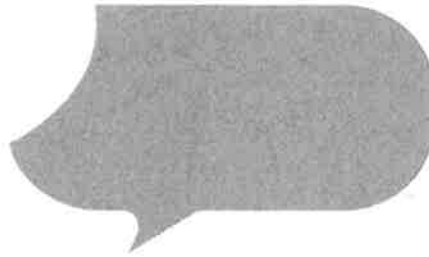
Find a way to keep our schools of choice!!

Any other comments?

I am disappointed in the lack of question answer period where all can hear concerns addressed publicly. I would like to hear others concerns and suggestions as well.



SD61 Catchment Boundary Review



*Don't forget to leave
your feedback!*

Bring this comment form to the open house and share your thoughts.
Please hand in the form before you leave.

What do you think about the proposed boundaries?

*I appreciate some things need to happen as SD61
looks to the future. That said, I think some
unintended consequences have not been considered.
Not all children learn the same, so it behooves
us to have several learning models available.*

What are some other neighbourhood-specific considerations?

Any other comments?

Thank you .



SD61 Catchment Boundary Review

*Don't forget to leave
your feedback!*

Bring this comment form to the open house and share your thoughts.
Please hand in the form before you leave.

What do you think about the proposed boundaries?

What are some other neighbourhood-specific considerations?

Greater access to program of choice
shows up as a theme from previous
consultation. Closing schools of choice
removes choice all together. This is an
unacceptable response to this community
desire.

Any other comments?



SD61 Catchment Boundary Review

*Don't forget to leave
your feedback!*

Bring this comment form to the open house and share your thoughts.
Please hand in the form before you leave.

What do you think about the proposed boundaries?

*YOU'VE BYPASS^{ED}ED COMMUNITY
INVOLVEMENT ~~FOR~~*

What are some other neighbourhood-specific considerations?

Any other comments?

*THE LEGACY OF SOUTH PARK
WILL OUTLIVE YOUR TERM OF OFFICE*



SD61 Catchment Boundary Review



***Don't forget to leave
your feedback!***

Bring this comment form to the open house and share your thoughts.
Please hand in the form before you leave.

What do you think about the proposed boundaries?

A claverdale

*I worry that the culture surrounding Southpark A
will be lost. Families united with a common goal
aspirations for their kids. Gossip victor is just
an awful idea dreamt up without consideration*

What are some other neighbourhood-specific considerations?

*for the
families
affected.*
*The culture of Southpark, as my child
attends brings great wealth to the neighbourhood.
more schools like this - not less!*

Any other comments?

*no families can afford to move into Jones bay /
downtown areas. i don't believe the population
of children in the area will increase. add class-
rooms to the current JBCC if needed.*

SD61 Catchment Boundary Review

We choose South park



*Don't forget to leave
your feedback!*

Bring this comment form to the open house and share your thoughts.
Please hand in the form before you leave.

What do you think about the proposed boundaries?

I am very concerned that eliminating South Park, Cloverdale and Victor schools of choice will result in a loss of differentiated options for parents in SD61. ~~##~~ Differentiated options ~~are~~ ^{are} very important to a district serving families with diverse needs.

What are some other neighbourhood-specific considerations?

Acceptance at South Park Family School informed our choice of neighborhood when we recently moved to Victoria. Although close, our address is outside the proposed catchment boundary!

Any other comments?

I sincerely hope that SD61 staff and trustees consider the value provided to the entire district by schools offering differentiated experiences to students. This value will be lost forever if these three schools are changed from "choice" to catchment.

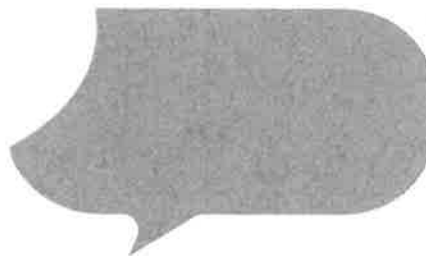
One *Learning* Community

 www.sd61.bc.ca  

 Greater
VICTORIA
School District



SD61 Catchment Boundary Review



*Don't forget to leave
your feedback!*

Bring this comment form to the open house and share your thoughts.
Please hand in the form before you leave.

What do you think about the proposed boundaries?

What are some other neighbourhood-specific considerations?

Any other comments?

I am greatly concerned about losing elementary
schools / programs of choice.



SD61 Catchment Boundary Review

*Don't forget to leave
your feedback!*

Bring this comment form to the open house and share your thoughts.
Please hand in the form before you leave.

What do you think about the proposed boundaries?

*there was no consideration given to schools of
choice being maintained.*

What are some other neighbourhood-specific considerations?

*schools of choice are good for kids, families,
communities and districts at large. they are
valuable and sought after. They alleviate
burdens of catchment schools. the numbers speak
for themselves.*

Any other comments?

*Please don't take away our
choice. concerned clverdale
parent.*



SD61 Catchment Boundary Review

Must be
answered
Southpark Family
SSS@gmail.com

***Don't forget to leave
your feedback!***

Bring this comment form to the open house and share your thoughts.
Please hand in the form before you leave.

What do you think about the proposed boundaries?

This list is from the families
of Southpark.

What are some other neighbourhood-specific considerations?

Any other comments?

Open House - Key Questions:

- 1. Please describe the steps used by the School District to evaluate the impact of the closure of the South Park educational program of choice on its students?**
- 2. Please describe the relevant feasibility studies, assessments of alternatives relating to the decision to close South Park Family School as a program of choice, and please provide me with a copy.**
- 3. School District Policy 110 Equity recognises that the District contains equity seeking populations, and recognises that equal, where everyone treated the same, is not always equitable, and defines equity as having fair and equal opportunity in accordance to individual's needs, to participate in and enjoy the benefits of an educational program. The policy obligates the School District to use equity as the lens through which it makes decisions regarding the distribution of financial resources, human resources and programming.**

Did the School District analyse its catchment boundary proposal in light of its obligations under Policy 110, especially in the context of closing of Victor, South Park and Cloverdale elementary at the same time as committing to expand early French immersion access?

Please provide me with a copy of the analysis, including any special needs assessment for the district.

- 4. School District Policy 5119.5 Student Retention (Preventative/Remedial) confirms a decision of the Board that its administration and staff place emphasis on both student services and student retention, and implement a board policy that preventative strategies be developed and utilised. This issue is pressing given the underreported practice of excluding children with disabilities from schools. South Park Family Schools serves a portion of the population who lack trust in public schools, who consider home schooling as a viable alternative, and who turn to South Park as a last resort after having unsuccessful experiences in other schools. As such I believe South Park should be seen as playing a significant part in student retention at the elementary school level.**

Has the School district analysed the proposal to close South Park Family School's educational program of choice through the lens of Policy 5119.5?

- 5. District Policy 5131.4 Substance Abuse confirms the Board's shared responsibility together with the community for addressing problems associated with the use and abuse of mood altering substances. The**

Policy states that the Board shall encourage and support the identification of an early intervention into problems of substance abuse among students through utilisation of school as well as community resources. One important preventative factor in preventing future substance abuse and mental health concerns is to have safe adults at school. If having safe adults at school is an expectation that is initiated in elementary and endures through the child's education, youth are more likely to turn to their school community for support and easily access supportive adults rather than peers. South Park's educational program is predicated on active parental involvement in the school, and the visible trust and collaboration between the teachers and the parents provide a clear signalling to the students that there are safe and caring adults in the school, and sets the expectation for the duration of their education.

Has the School District analysed the proposal to close the educational program of choice at South Park Family School through the lens of District Policy 5131.4?

6. In Policy 6120.1 Programs of Choice the Board recognises its obligation, consistent with the School Act, to provide an educational program for all students of school age, and clearly states that it is the goal of the Board to offer programs promoting excellence in instruction and optimal achievement for all students. Each student arrives at their full potential differently. South Park has traditionally had a role in fostering an environment for more experiential learners. South Park Family School has for the last 45 years been a leading school for the development of new programs and strategies for the progress of excellence in education in Victoria as a result of its culture of trust between parents, students and children and inclusion. The decision to leave sports, challenge and French programs of choice unchanged would seem to suggest that the School District is valuing the needs of secondary, middle learning.

Has the School District analysed the proposal to close the educational programs of choice at South Park Family School, Victor School, and Cloverdale Traditional School, while at the same time as expanding the early French immersion program of choice, through the lens of District Policy 6120.01?

7. What was the breakdown of respondents for the survey by catchment, parent/students, others?
8. Why are the boundary lines untouched for Oak Bay Schools?
9. The Barager projections for the period 2017 – 2033 suggest that enrolment in elementary schools will peak in 2020, in middle schools in 2024, and in high school in 2027, and decrease from then onward.

(It seems a shame that portables couldn't be used) **Why can't portables be used to relieve the (short term) pressures on (some) elementary schools projected over the next year.**

Are (concerns) over enrolment projections being overblown?

Please provide us with copies of all projections models created for the elementary school new catchment boundary proposal.

10. The qualitative responses to the District's survey show that our greater community considers socio economic diversity in schools as a core value. The catchment model presented by the school district favour home owners who can afford to live in affluent neighbourhoods, and we note boundary lines have been untouched for Oak Bay Schools. South Park Family School and Cloverdale Traditional school, accessible to individuals across the district, are as a result, socio-economically diverse.

Has the School district considered the impact of the proposed changes from the perspective of the socio-economic diversity of our school district and equal distribution of resources?

11. Please explain the steps taken and process covered to create the questions included, and the questions excluded from, the survey being used to inform this boundary proposal.

It is notable that questions about middle and high school French, Sports and Challenge programs were included in the survey, yet there were no questions about preference and support of elementary schools of choice included from the question bank in the survey. **Why?**

Is this not a clear bias against elementary schools of choice by effectively excluding all data by NOT asking these questions?

Were these questions deliberately excluded in order to justify an agenda already decided upon, i.e. to close elementary schools of choice?

How can such a blatantly biased data gathering process be allowed to be used to effectively end elementary schools of choice in SD61?



SD61 Catchment Boundary Review

- includes correspondence with Simon B,
Shelley Green, maps documenting
difference in distance.



*Don't forget to leave
your feedback!*

Bring this comment form to the open house and share your thoughts.
Please hand in the form before you leave.

What do you think about the proposed boundaries?

The concern that I outlined in the attached emails was
not addressed. This is an extremely fair ask & a simple
fix. Please review and call with any questions. Thank you!

What are some other neighbourhood-specific considerations?

Half of my road "Middowne Road" is in the Campus View
Catchment & half is in Willows (North side of Street vs. South side).
2.7 km walk vs. 1.3 km walk. Less safe. Splitting across the
street friends up.

Any other comments?

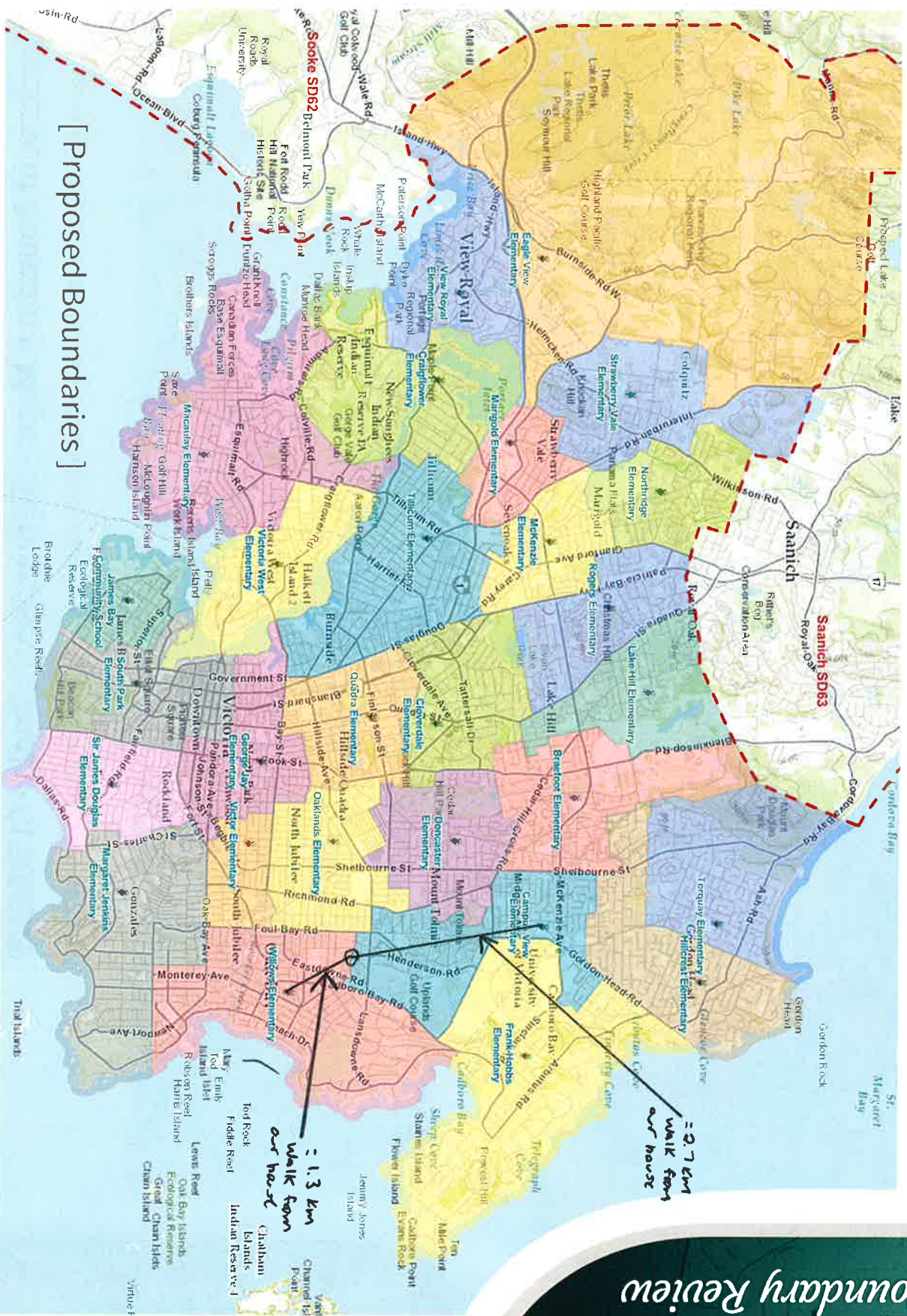
I recognize this isn't easy. Thank you for your efforts & for
doing a very difficult job. Please call me with any
questions.



SD61 Catchment Boundary Review

Access all interactive catchment boundary maps at www.sd61.bc.ca/schools/school-catchment-boundaries/

* Please Review * Midtown Road Catchment Boundary Maps - Elementary Schools - PROPOSED

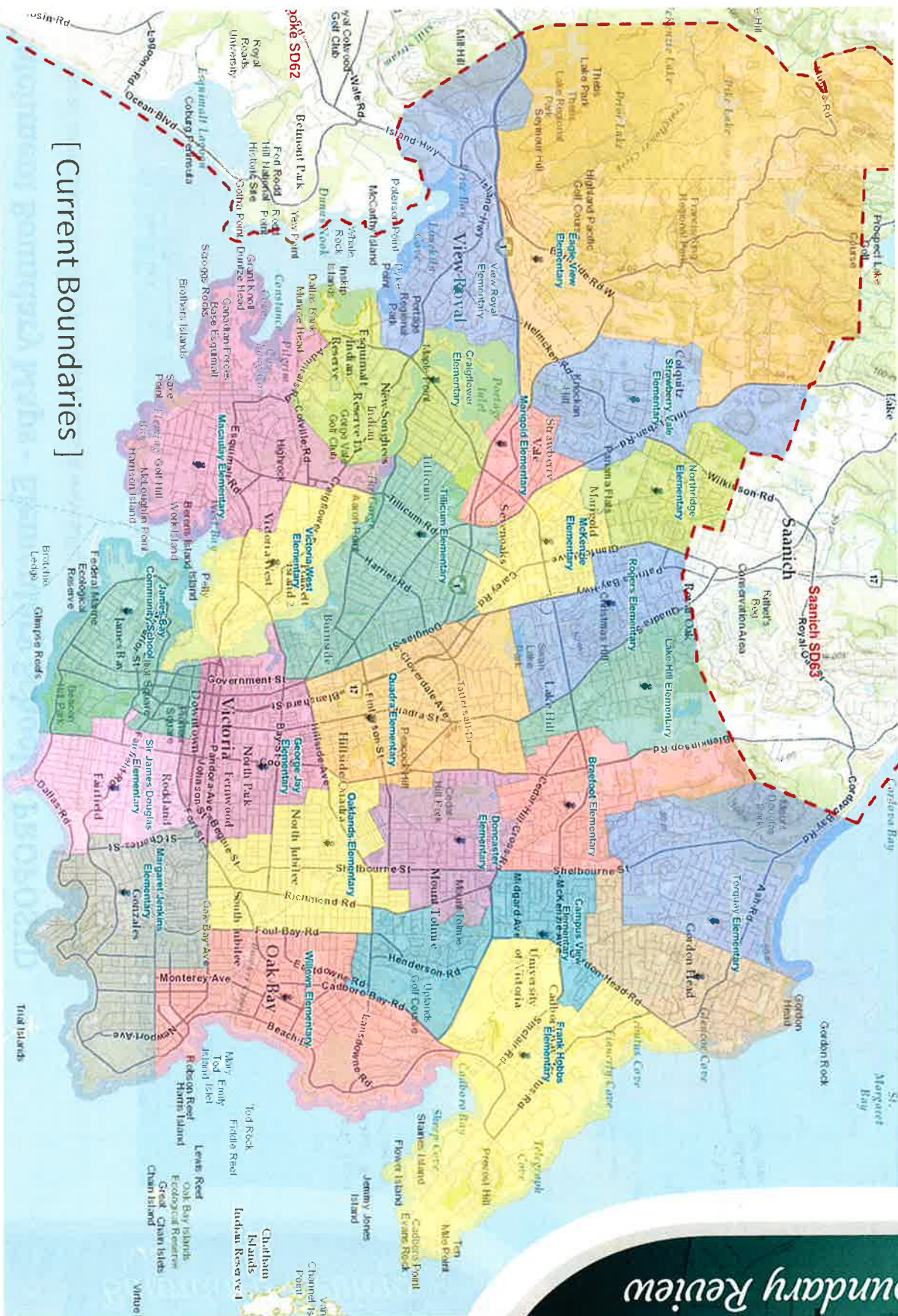


[Proposed Boundaries]

Catchment Boundary Maps - Elementary Schools - CURRENT

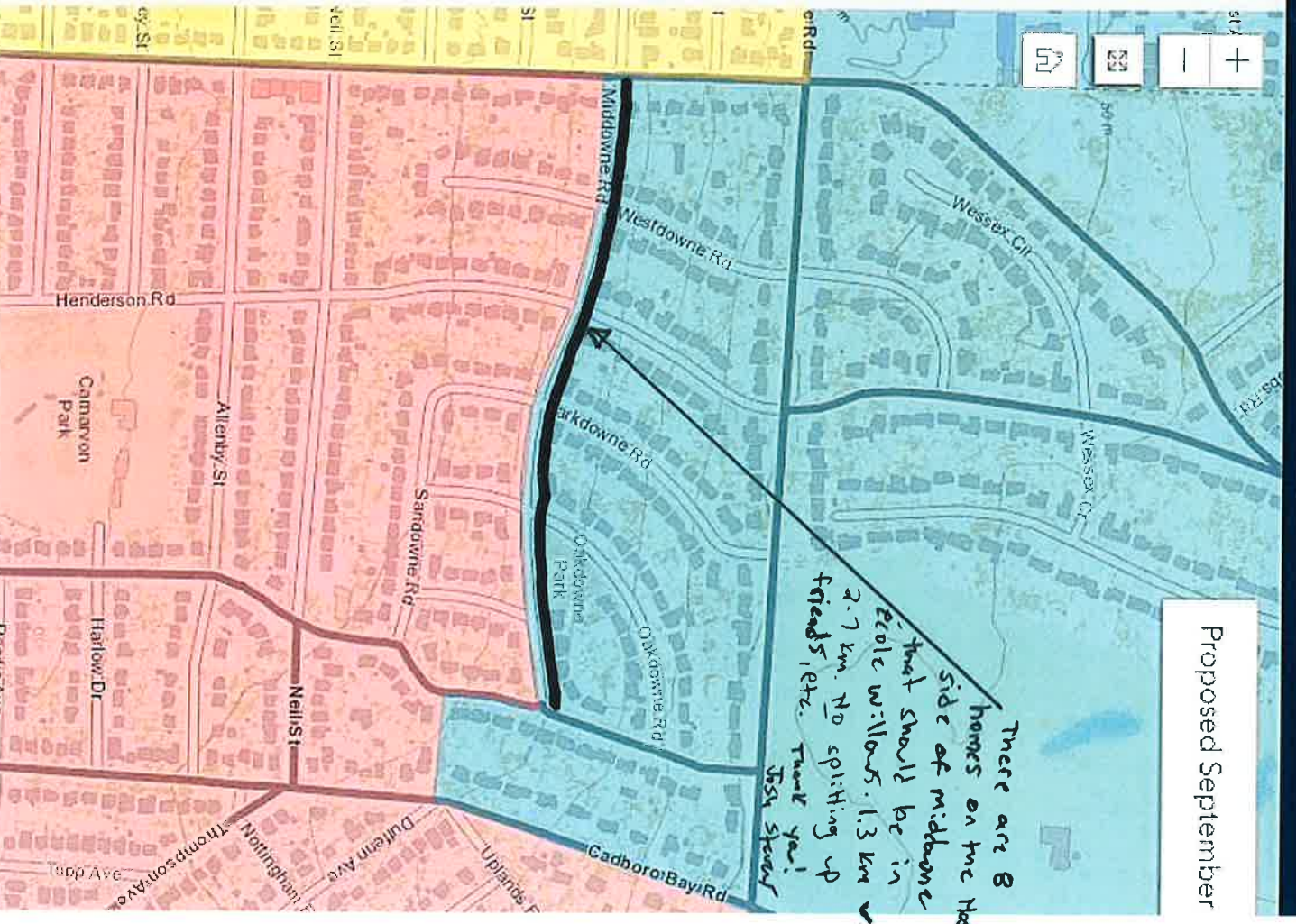
Access all interactive catchment boundary maps at www.sd61.bc.ca/schools/school-catchment-boundaries/

[Current Boundaries]



SD61 Catchment
Boundary Review





[REDACTED]

From: [REDACTED]
Sent: January 7, 2019 12:54 PM
To: 'Green, Shelley'
Subject: RE: Upcoming Review on School Boundaries - Please Look Closely at Middowne Road in North Oak Bay - [REDACTED]

Hi Shelley,

Welcome back! Happy New Year.

I wanted to follow-up on my ask below. Prior to the District boundaries being redrawn (hopefully positively for the North side of Middowne Road), would it be possible to ensure that my daughter is able to attend Willows?

Thank you!

[REDACTED]

From: [REDACTED]
Sent: December 21, 2018 11:50 AM
To: 'Green, Shelley' <sgreen@sd61.bc.ca>
Subject: RE: Upcoming Review on School Boundaries - Please Look Closely at Middowne Road in North Oak Bay - [REDACTED]

[REDACTED]

Hi Shelley,

I hope that this finds you well.

We have replied to the survey (which was great by the way) and are now anxiously awaiting the results/decisions (recognize that is still a way out).

In the interim, I was wondering if there was any way that our daughter [REDACTED] could receive a seat at Willows for this upcoming September? Again, our road (Middowne Road) has approximately 15 homes on it, and is divided down the middle so that the homes on the South side of the road are in the Willows catchment (950 meter walk from our house), and the homes on the North side of the road are in the Campus View catchment (2.44 km walk from our house).

I have raised this to you (and Simon) already, am hopeful that once the 'new' lines are redrawn all will be good, but in the interim, I would love to ensure that [REDACTED] is able to attend Willows in September.

Thank you very much Shelley! Your transparency and communication are truly appreciated.

[REDACTED]

From: Green, Shelley [<mailto:sgreen@sd61.bc.ca>]
Sent: November 13, 2018 03:19 PM
To: [REDACTED]
Subject: RE: Upcoming Review on School Boundaries - Please Look Closely at Middowne Road in North Oak Bay - [REDACTED]

[REDACTED]

[REDACTED]

We are all set to send out the survey on Monday. We will be informing the board tonight, letting schools know on Wednesday/Thursday, media the same and then put it out officially on Monday.
Shelley

From: [REDACTED]
Sent: Tuesday, November 13, 2018 2:43 PM
To: Green, Shelley <sgreen@sd61.bc.ca>
Subject: Re: Upcoming Review on School Boundaries - Please Look Closely at Middowne Road in North Oak Bay - [REDACTED]
[REDACTED]

Hi Shelley,

I wanted to follow up on this. I have not received a survey. Has it gone out yet?

It's really important to us that we get the boundaries redrawn to include us in the Willows/Monterrey/Oak Bay High catchment. I will stay on it until I know that that is being considered.

Appreciate any update you can provide.

[REDACTED]

On Oct 17, 2018, at 7:13 AM, Green, Shelley <sgreen@sd61.bc.ca> wrote:

Good Morning [REDACTED]

Thank you for your e-mail. I appreciate the complexity of your concerns and will certainly share it with our boundary working group. I am sure they will keep this information on their "radar" as they move through the process. If there are any questions we will not hesitate to give you a call.
I am sure you have seen the process outline. Our survey will be coming out in the coming weeks. Some of the questions will like closely to what you have stated below so I encourage you to fill in the survey as that will help us move in clear directions as we move through this challenging process.
If you have further thoughts please feel free to share them with our team.
Once again [REDACTED] thank you for reaching out to us. Your concerns are appreciated.
[REDACTED]

From: [REDACTED]
Sent: Tuesday, October 16, 2018 10:16 PM
To: Green, Shelley <sgreen@sd61.bc.ca>
Cc: [REDACTED]
Subject: Upcoming Review on School Boundaries - Please Look Closely at Middowne Road in North Oak Bay - [REDACTED]

Good evening Shelley

My name is [REDACTED] and I am reaching out with regard to the upcoming review on School District Boundaries. I believe that we are in a bit of a unique situation with respect to catchment boundaries, and was hoping that you could take a couple of minutes to review my note below and take it into consideration when making decisions around the new boundaries.

First, for full transparency, I reached out to Simon Burgers about this on April 3rd, 2016. He called me back the following day and we had a conversation where he stated that he was not able to make any adjustments to the boundaries at that time, but that the District does conduct reviews “from time to time” and I should reach out then. That is what I am doing now 😊.

Some Background:

We have two children—[REDACTED] and [REDACTED] and will likely be entering school in September. For [REDACTED] first year of school, we opted to send him to South Park to take advantage of the Coastal Kindergarten program. It was an excellent program, and we chose to keep in at South Park until the middle of grade 2, when we ultimately decided to withdraw him from South Park and enrol him in the Distributed Learning program through SIDES for the remainder of grade 2 and now into grade 3 (my wife is card carrying BCTF Teacher, and has done a fantastic job with his education). Our decision to withdraw [REDACTED] from South Park was based on a couple of issues—one of which was the distance of the school from our home. The school was just over 6 km from our house, and the 40+ minute twice daily travel time was not ideal—especially after the unique Coastal Kindergarten ‘allure’ was no longer there. As mentioned above, I did reach out to Simon to see whether or not he could arrange for [REDACTED] to be admitted to Willows but it did not work out.

Regarding the current catchment boundaries:

We live on the North side of a small street that runs East/West called Middowne Road in North Oak Bay. As it pertains to our street, my wife and I believe that the catchment boundary is fundamentally wrong. As it stands today, every home on the even numbered (South) side of Middowne is in the Willows/Monterrey/Oak Bay High catchment, and everyone on the odd numbered (North) side of the street is in the Campus View/Arbutus/Mount Douglas Secondary catchment. While I understand that at some point a line must be drawn, I ask that the line splitting our street down the middle be reconsidered. There are only ten (10) homes on Middowne Road on the North side of the street, and we are likely the only people with school aged children (today) on the North side of Middowne Road.

<image001.png>

As you can see from the graph above, Campus View is more than twice as far away from our house as Willows, and both the Middle and High School options are significantly further as well. Beyond the consideration of convenience, the School District must also consider the safety factor of requiring a student to travel twice as far as is required to a school daily. I am formally calling this out as a concern at this point. Also, as you are very likely aware, a recent study conducted by Germany-based Education International showed that long journeys to school have a negative impact on students’ health and on their education achievement levels.

As it pertains to Elementary school, here is an ‘as the crow flies’ representation that shows the distance between our home and the two elementary schools:



My recommendation/ask is that the ten (10) houses the North (even numbered) side Middelwene Road be moved into the Willows/Monterrey/Oak Bay catchment. As it pertains to this particular street, it make no sense to have half in the Willows and half in Campus View. Please see the map below, for a visual representation of what I am suggesting. I have not formally reviewed the demographics on the North side of the street, however, again, I can tell you that I believe today our two children are the only two that would be considered school aged.

Here is an overview of our street (our house is in the upper circle), and the person across the street is in the Willows/Monterrey/Oak Bay catchment.

<image003.jpg>

And a street view (please note the street is very small).



Thank-you for your consideration in this matter Shelley. If you have any questions or require clarification on any part of this, please do not hesitate to reach out. We are committed to ensuring that both of our children have the best possible opportunities and education, and we really do appreciate your support in this ask.

Have a great week.

