



One *Learning* Community



Greater
VICTORIA
School District



Greater
VICTORIA
School District

School District No. 61

Catchment Boundary *Review*

Increasing Enrolment

Limited Space

Class size and
Composition Language

Ratio of Catchment to
Non-catchment

One *Learning* Community



Greater
VICTORIA
School District

Background

- *Declining enrolment for years*
- *More flexibility for students to transfer*
- *District has seen an additional 1,000 (FTE) students since 2015/16 school year*

Considerations

- *Capacity of Schools*
- *Commuting to School*
- *Safe Routes to School*
- *Student Projections*
- *Student Transfers*
- *Staffing*
- *Programs of Choice*
- *Elementary Schools of Choice*



Capacity of Schools



Age of Current Infrastructure



Seismic Program



Future Housing Starts



Transportation



Safe Routes to School



Student Enrolment Priorities



Enrolment Projections



Current Student Enrolment



Student Transfers



Staffing



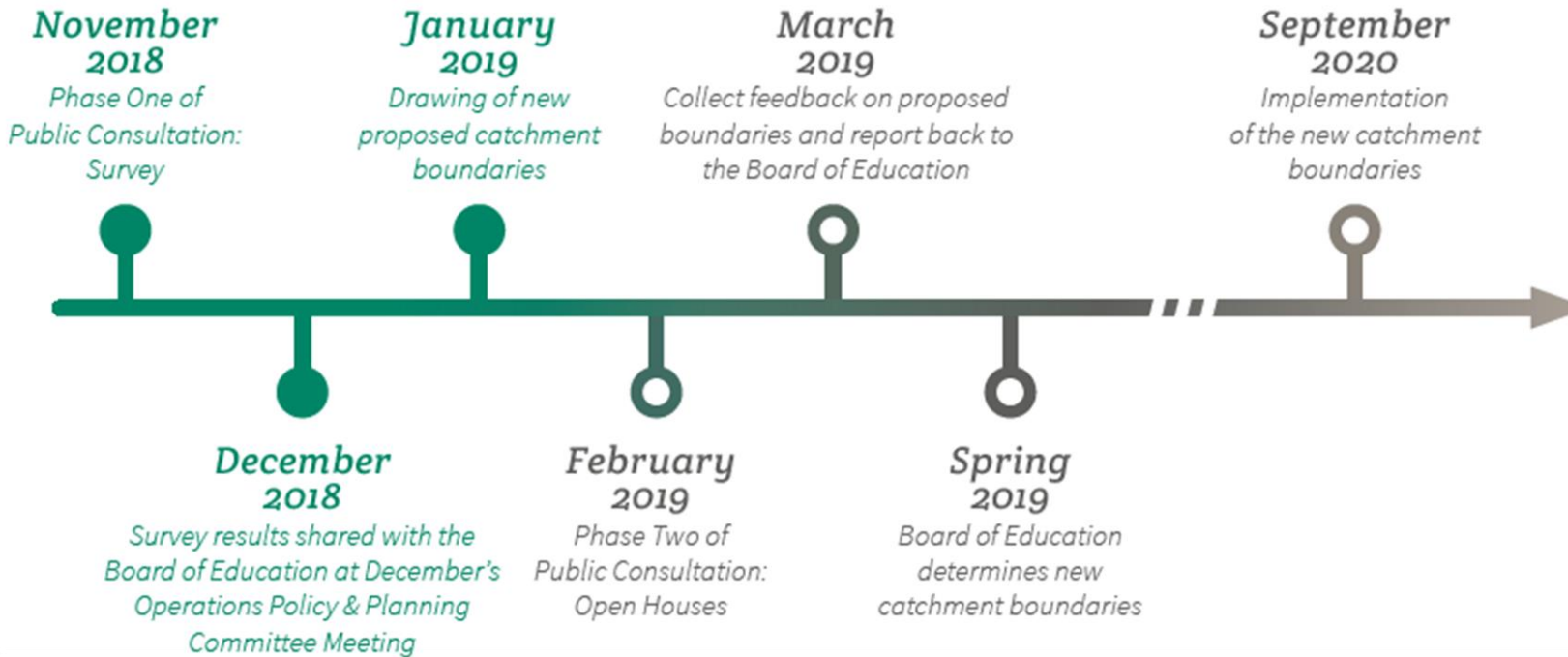
*Programs of Choice
(French Immersion,
Sports Academies, etc.)*



*Schools of Choice
(Cloverdale,
South Park)*

Boundary Review

Where Are We in the Process?



What We Heard – Survey Results

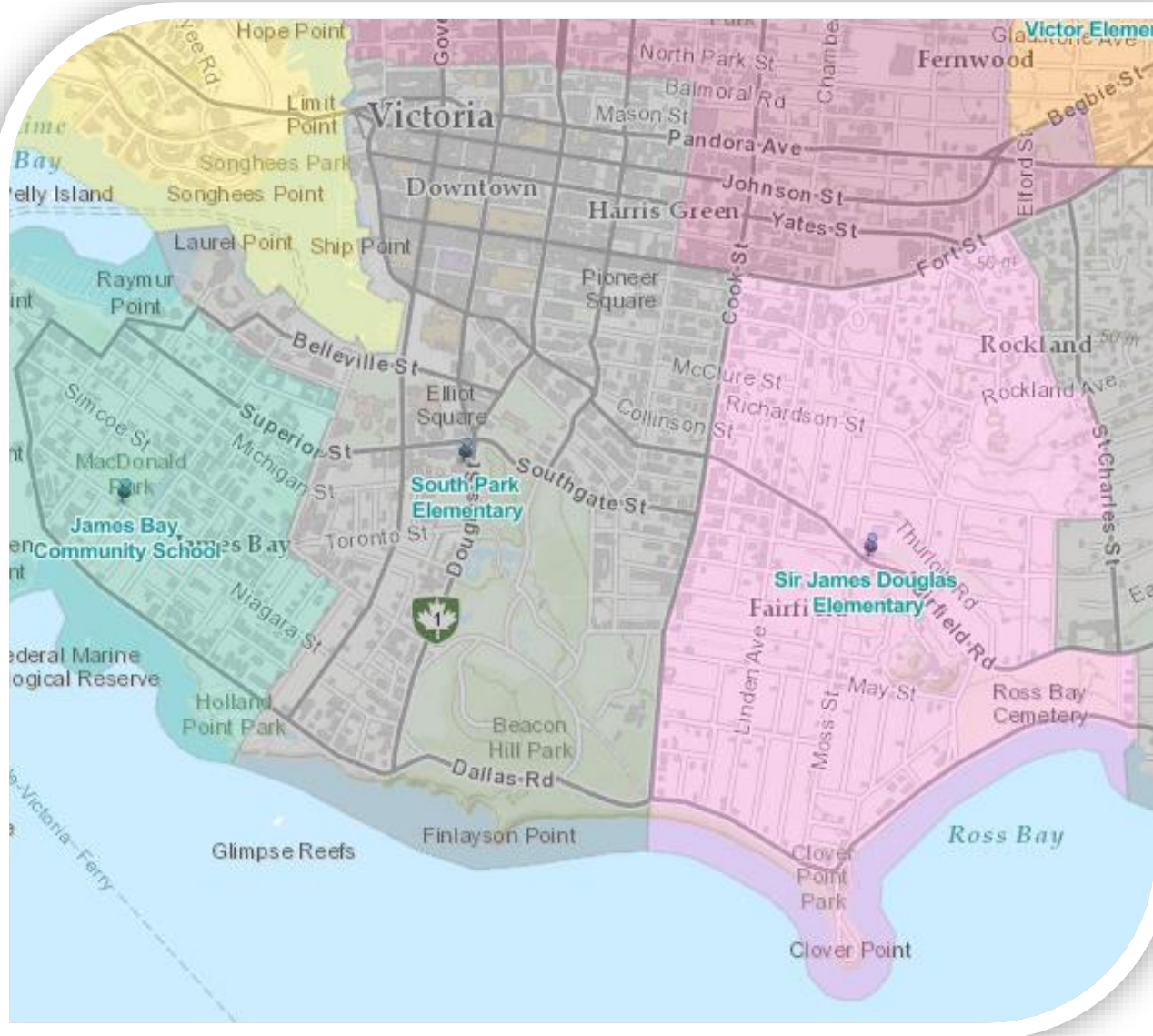
- *Students being able to attend their neighbourhood school*
- *Keeping siblings and families together*
- *Keeping cohorts together*
- *Safety First – partner with the CRD and local municipalities to improve crosswalks, pathways and sidewalks*
- *Limiting travel distance to and from school*
- *No catchment should have students traveling across highways*
- *Equitable Programming*
- *Desire for more French Immersion*
- *Reopening Schools*
- *Requests to minimize change*

The District heard from more than **5,100 participants**, which included students, parents and guardians of current and future students.

Guiding Considerations

- *Limiting walk distances to and from school*
- *Ensuring safe active travel routes within catchment areas*
- *Utilizing facilities currently available to the District*
Immediately alleviating enrolment pressures in Victoria's central corridor
- *Providing space to accommodate future growth*
- *Allowing S.J. Willis to be utilized as a school when another school is being seismically upgraded*
- *Aligning boundaries with historical transfer demands*
- *Keeping "Families of Schools" in alignment with school catchment pathways in efforts to keep as many cohorts together during school level transitions*
- *Maintaining current grade configurations at all schools*
- *Addressing French Immersion access*
- *Minimizing the need to build further learning studios or move existing portables*
- *Keeping Secondary Programs of Choice at their current sites*
- *Limiting the amount of the change for schools, parents and community*
- *Continuing to provide the opportunity for choice through student transfers where space permits, particularly at the secondary level*
- *Allowing students to complete their studies at their current school until the next school level transition*

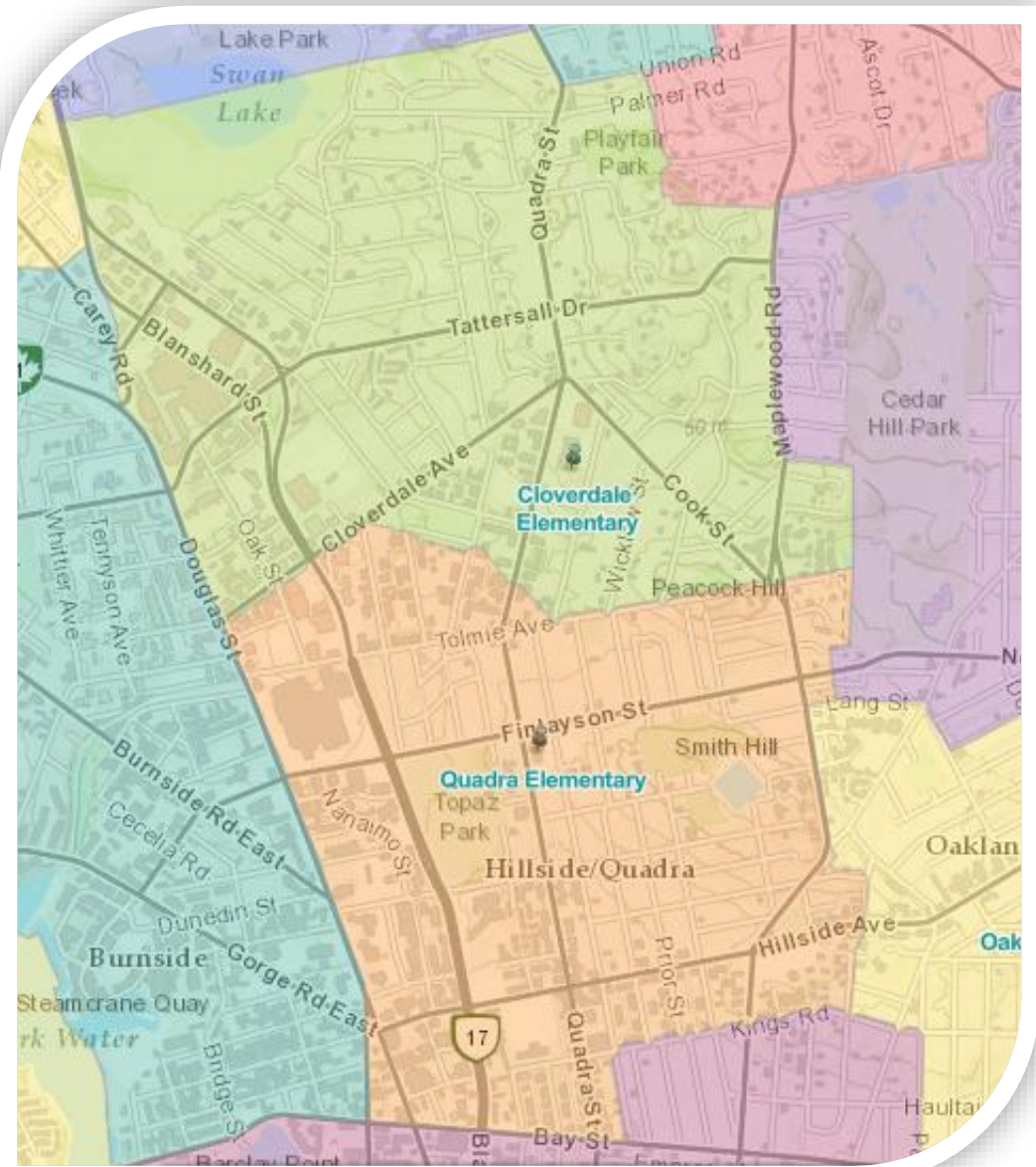
Proposed Changes – Elementary



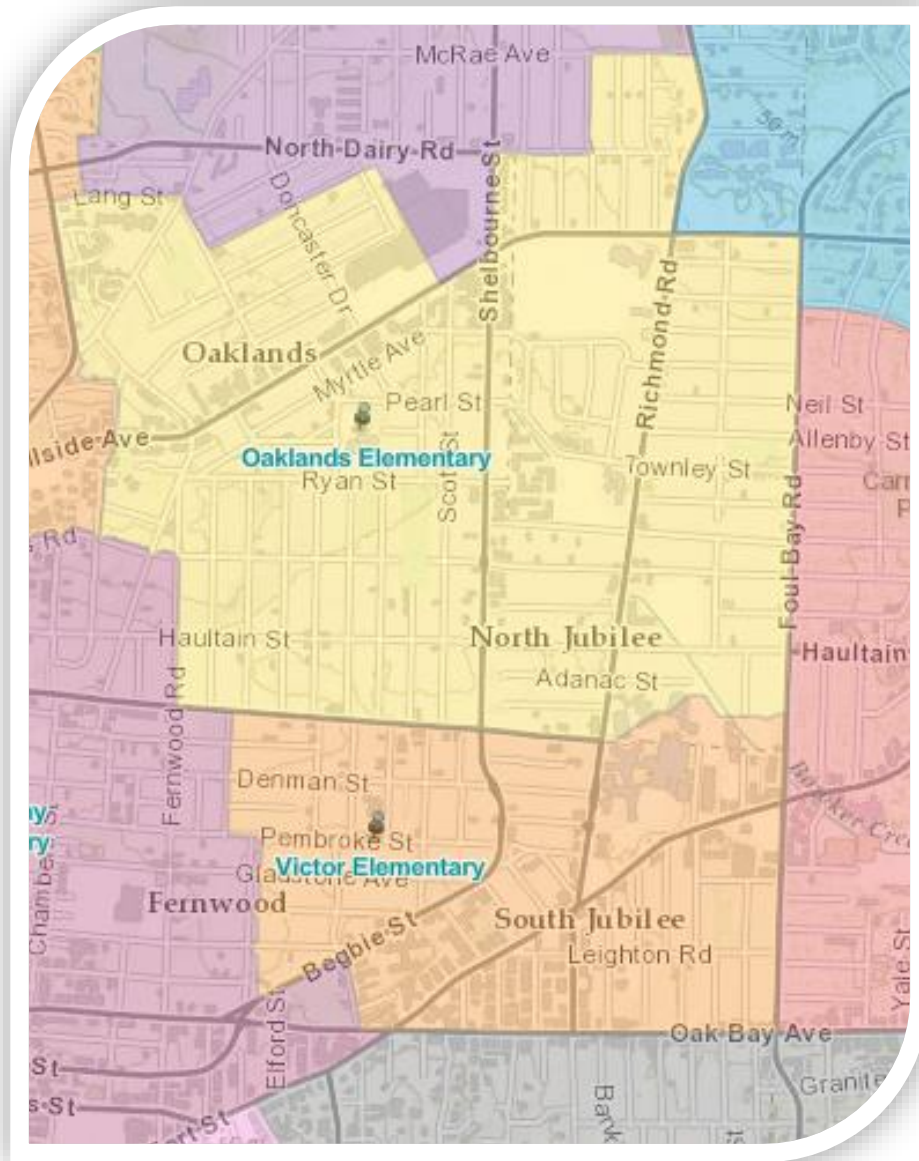
- *Introduction of three new elementary catchment boundaries (South Park, Cloverdale, Victor) to address population density in the core area of Victoria and Southern Saanich.*
- *The James Bay Elementary and Sir James Douglas catchments would be reduced through the creation of a South Park catchment for the James Bay and Beacon Hill area, and portions of Victoria's downtown core.*

Proposed Changes Elementary – Continued

- The Quadra Elementary catchment would be reduced through the creation of a Cloverdale boundary.*



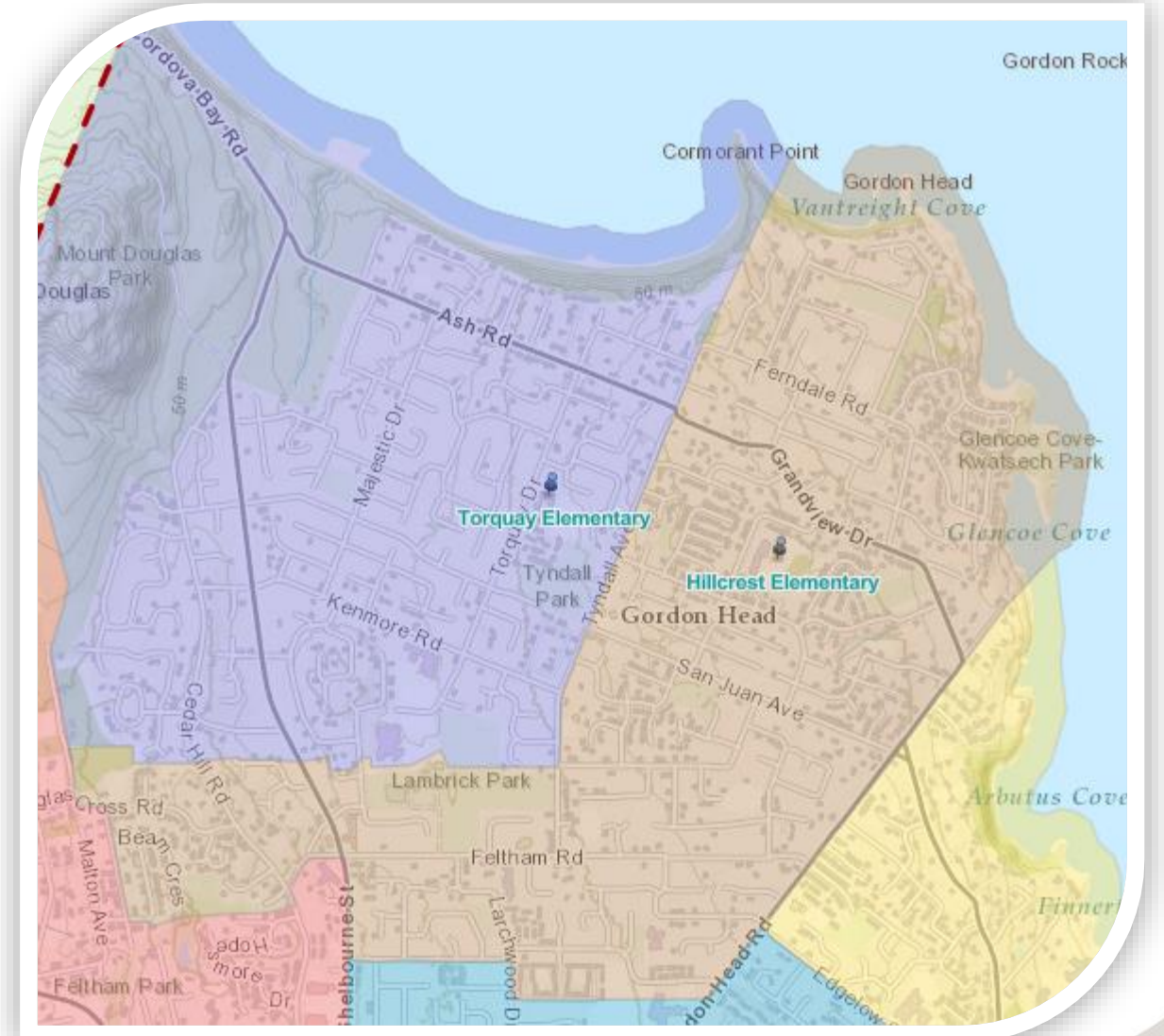
Proposed Changes Elementary – Continued



- *The current Oaklands Elementary boundary would be reduced. The former portion is proposed to become the new Victor School catchment.*
- *Victor School would open as an elementary catchment school. We currently anticipate that the school will start by phasing in Kindergarten and Grade One students. Some of the current student population will transition into a new purpose built location.*
- *George Jay's catchment would become smaller with the introduction of the Victor and South Park catchments and changes to the Quadra catchment.*

Proposed Changes Elementary – Continued

- The southern portion of Torquay Elementary catchment would become part of the Hillcrest catchment.*



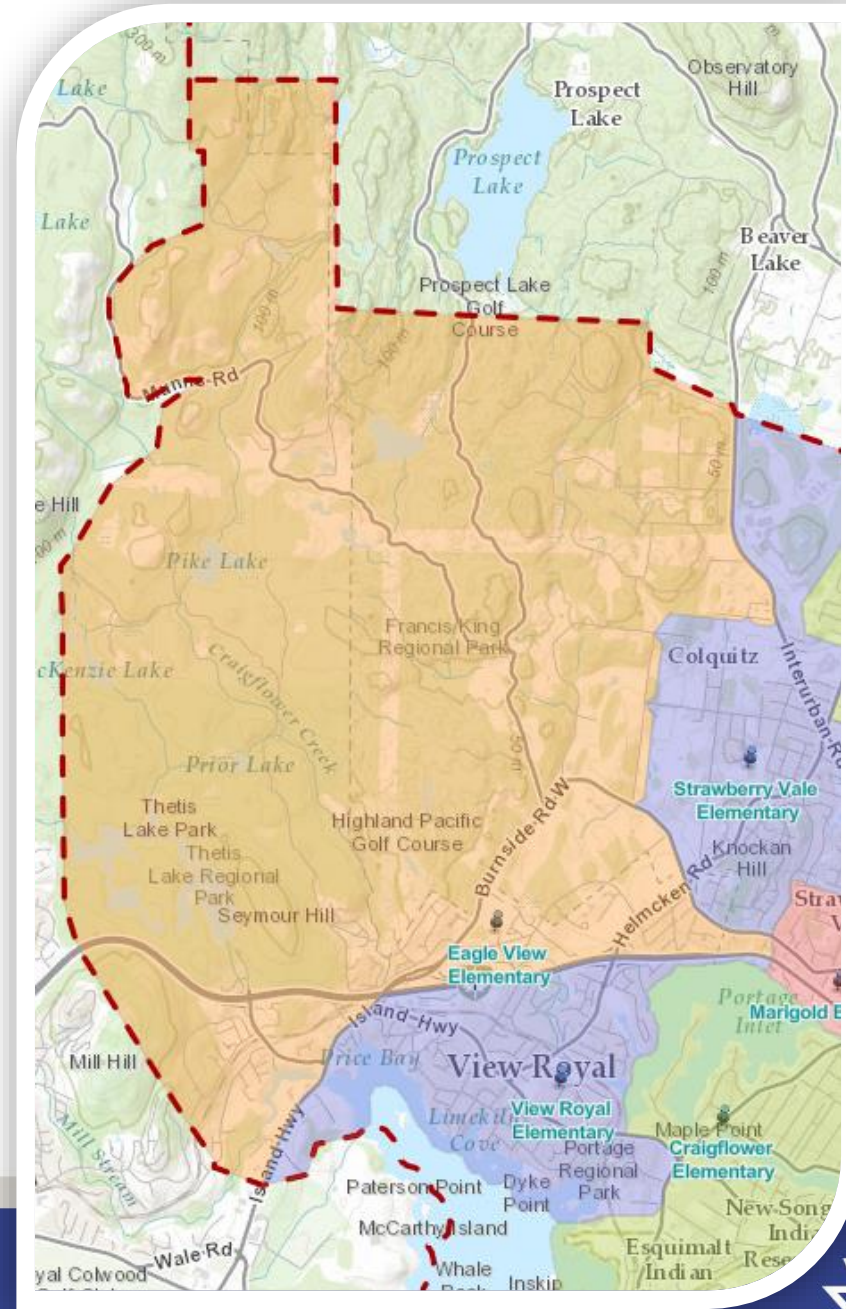
Proposed Changes Elementary – Continued

- *Reopening of Richmond Elementary as a middle school South Campus for Lansdowne. The intention is for Richmond to serve the Grade Six cohort.*



Proposed Changes Elementary – Continued

- The Thetis Vale area of View Royal would become part of the Eagle View catchment.*



Proposed Changes to School Catchment Pathways

- *English Doncaster students would transition to Mt. Douglas*
- *Students at Oaklands and Victor would become a part of the Oak Bay Family of Schools.*
- *Rogers Elementary students would transition to Glanford Middle then continue to Reynolds Secondary*
- *South Park would transition students to Central Middle then Vic High*
- *Cloverdale would transition students to Cedar Hill then Reynolds Secondary*
- *French Immersion Margaret Jenkins students would transition into Lansdowne then Oak Bay High*
- *French Immersion Quadra students would transition into Lansdowne then Vic High*

Proposed Changes - Middle

Access all interactive catchment boundary maps at
www.sd61.bc.ca/schools/school-catchment-boundaries/



Proposed Changes – Secondary



Next Steps

Open House #1	Open House #2	Open House #3
<p>Wednesday, February 6th, 2019 6:30 p.m.—8:30 p.m. Spectrum Community Secondary (in Gymnasium B)</p>	<p>Wednesday, February 13th, 2019 6:30 p.m.—8:30 p.m. Lansdowne (in the Gymnasium)</p>	<p>Saturday, February 16th, 2019 8:30 a.m.—11:30 a.m. Victoria High (in Andrews Gymnasium)</p>