

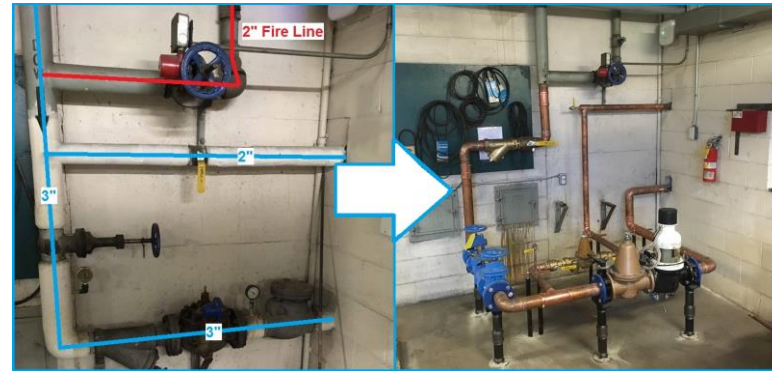
Facilities Update Summer 2018

Drinking Water Improvements

*Total installation of 60 Stainless Steel fountains
and 63 bottle fillers – COMPLETE*



*Installation of water supply pre-filters at 41
Sites – ONGOING Est completion date June
2019*



Field Renovations / Installation of Irrigation Systems:

- *Hillcrest Elementary*
- *Vic West Elementary*
- *Arbutus Middle School*
- *Campus View Elementary*



DDC Heating Control Upgrades

- Colquitz
- Glanford
- Northridge
- Oaklands
- Torquay
- View Royal

10-Aug-8 09:39:08 Connected:2000

Labels Alarm Climate Zones In HWB/Ridge Off/In V2.68/0 L0

Graphics

Database

Access

History

Options

Help

Web Site

Walker Systems Building Intelligence

Schedules

School	[OL]
Annual	[OL]
Academ	[OL]
Gym	[OL]
Purge	[OL]
Purge Ann	[OL]
On Temp	12.5 deg C [OL]
Day High Out	12.5 deg C [OL]

Northridge Elementary School

NW WING

NE WING

SW WING

SE WING

Mechanical

GYM

HALL

BUILDING OP

Reliable Controls

SD61 Esquimalt High

Esquimalt High School Main Menu

Air & Heating Systems

Water Systems

Global Setpoints

Air Handler AH-1 (Sciences)

Heating Water System

User Adjust Upper Limit 1.0 °C

Air Handler AH-2 (Power)

Domestic Hot Water System

User Adjust Lower Limit -1.0 °C

Air Handler AH-3 (South Wing)

Floor Plans

Air Handler AH-4 (North Wing 1, 1, 1, 1)

Floor Plan Overview

Air Handler AH-5 (North Wing 1, 1, 1, 1)

Miscellaneous

Air Handler AH-6 (Administration)

Schedule Summary

Air Handler AH-7 (Automobiles)

Misc. Monitored Points (Storm Sump)

Air Handler AH-8 (Change Rooms)

SL Alarm Summary

Air Handler AH-9 (Music Room)

System Credits

Air Handler AH-10 (Auditorium)

Air Handler AH-11 (Gym)

Air Handler AH-12 (Blanch Room)

Air Handler AH-13 (Kitchen)

Miscellaneous Exhaust Fans

Unit Heaters

Force Flow Heaters

Connector & Wall Fin Heating Summaries

Holiday Annual Schedule

OFF

Note: Scheduled holidays (annual schedule on) will force select weekly schedules off.

Main Menu

Previous

Log Off

Help

Alarms

OAT 24.0 °C

10-Aug-8 09:39:50 Connected:2000

Labels Alarm Climate Zones In HWB/Ridge Off/In V2.68/0 L0

Graphics

Database

Access

History

Options

Help

Web Site

Walker Systems Building Intelligence

NE Zones

Valve	12.5 °C [OL]
Setpoint	12.5 °C [OL]
Amps	1.2 [F]
Status	OK [F]

Change Rooms

Valve	12.5 °C [OL]
Setpoint	12.5 °C [OL]
Amps	1.2 [F]
Status	OK [F]

SE Classrooms

Valve	12.5 °C [OL]
Setpoint	12.5 °C [OL]
Amps	1.2 [F]
Status	OK [F]

NW Classrooms

Valve	12.5 °C [OL]
Setpoint	12.5 °C [OL]
Amps	1.2 [F]
Status	OK [F]

Reliable Controls

SD61 Esquimalt High

Esquimalt High School Heating Water System

Boiler Summary

Boiler B-1

Boiler B-2

Pump P-1

Pump P-2

Pump P-3

Pump P-4

On average, the 10 coldest zones are at their occupied setpoint + 1.0 °C

Currently, the building's average HCV position = 2.2 %

Pumps P-3/4 speed will reset to maintain the 10 coldest zones at setpoint (on average) during occupied periods. Average HCV position will reset pump speeds during unoccupied periods.

Heating Water System Control

Heating System Annual Schedule

OFF

Disables HW System Command when OFF

High Ambient Heating Lockout Setpoint

10.0 °C

High Ambient HWS Lockout is ON when OAT = Setpoint

High Ambient HWS Lockout

On

Disables HW System Command when ON

HW System Command

Off

Starts pumps required for heating system to operate

HW System Status

On

Indicates heating system is ready - boilers may operate and end - drivers may modulate

Main Menu

Previous

Log Off

Help

OAT 24.0 °C

One Learning Community

Playground Installations

- *Frank Hobbs Elementary*
- *Willows Elementary*
- *Vic West Elementary*



Parking Lot Resurfacing

- *Lansdowne Middle*
- *Mount Doug Secondary*



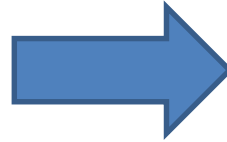
Mount Doug

- *New Gym Floor*
- *Boiler Replacement - replace 2 existing boilers with new energy-efficient condensing boilers and DDC controls*
- *Window replacement*



Willows Elementary

- *Replace 2 existing boilers with new energy-efficient condensing boilers and DDC controls*



Sir James Douglas

- *Flooring replacement (Office and Administration areas, Staff Room, Library and 14 classrooms)*



Campus View Seismic

- *Construction of new seismic shear walls*
- *Ongoing*



Roofing Projects

- *Frank Hobbs*
- *Sir James Douglas*
- *Richmond*
- *Marigold*
- *George Jay*
- *Zuadra*



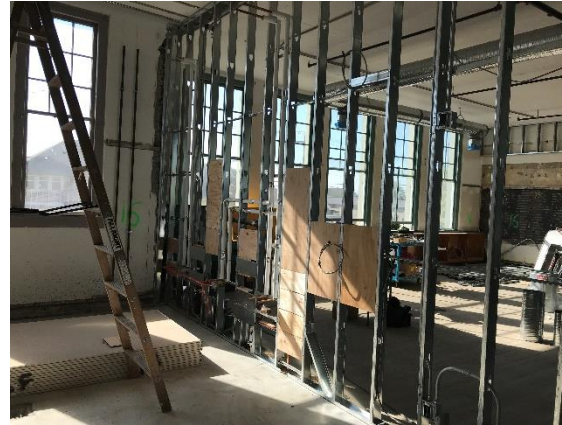
Portable Classroom Upgrades

- New windows and siding at Cloverdale and Margaret Jenkins*



Burnside Education Center Renovation

- Complete seismic and interior renovations, future home of SJ Willis
- E7A Completion - December 2018*



Learning Studios at Central, Zuadra and Oaklands

