



**The Board of Education of School District No. 61 (Greater Victoria)
Education Policy and Directions Committee Meeting, Monday, November 6th, 2017 @ 7:00 p.m.
Tolmie Boardroom, 556 Boleskine Road**

AGENDA

**Estimated
Times**

A. COMMENCEMENT OF MEETING

The Greater Victoria School District wishes to recognize and acknowledge the Esquimalt and Songhees Nations, on whose traditional territories, we live, we learn, and we do our work.

7:00 - 7:05 pm **A1. Approval of the Agenda** (p 1)

7:05 - 7:10 pm **A2. Approval of the Minutes**
 a) Approval of the October 2nd, 2017 Ed Policy Minutes (p 2-4)

A3. Business arising from the Minutes

7:10 - 8:00 pm **B. New Business**

- B1. Introduction of Student Representative**
Introduction of Nicole Quast from Oak Bay Secondary Piet Langstraat
- B2. Truth and Reconciliation** Shelley Green/
Craig Schellenberg
- B3. Supports for Children & Families
in Elementary Schools - Update** Piet Langstraat /
Deb Whitten (p 5-18)
- B4. Wellness Supports - Sexual Orientation Gender
Identity (SOGI) - Update** Harold Caldwell/
Jennifer Chambers/
Marnice Jones

C. NOTICE OF MOTIONS

C1. New Business

D. General Announcements

E. Adjournment

Minutes

Present: TRUSTEES

Ann Whiteaker, Chair
Diane McNally
Deborah Nohr
Peg Orcherton
Jordan Watters
Tom Ferris

ADMINISTRATION

Shelley Green, Deputy Superintendent
Deb Whitten, Associate Superintendent
Greg Kitchen, Associate Superintendent
Piet Langstraat, Superintendent of Schools
Louise Sheffer, Director, Learning Team
Nella Nelson, Aboriginal Education Coordinator
Craig Schellenberg, Aboriginal District Principal
Sean McCartney, VPVPA Representative
Darren Companion, GVTA Representative
Karen Walters-Edgar, Meeting Recorder

Guest: Katie Simmonds, Vice Principal, Northridge Elementary

Regrets: Jeanette Alexander, ASA Representative

The meeting was called to order at 7:00 p.m.

Chair Whiteaker welcomed everyone to tonight's meeting.

Chair Whiteaker also recognized and acknowledged the Esquimalt and Songhees Nations, on whose traditional territories we live, learn and do our work.

1. APPROVAL OF THE AGENDA

It was moved by Trustee Orcherton:

That the October 2nd, 2017 Education Policy and Directions agenda be approved.

Motion Carried Unanimously

2. APPROVAL OF THE MINUTES

It was moved by Trustee Ferris:

That the September 11th, 2017 Education Policy and Directions Committee meeting Regular Minutes be approved as amended by deleting the sentence on Page 2 of the Minutes, 5B - **Dress Code**, "Trustees agreed that the following motion needs to move forward to the Board of Education."

Motion Carried Unanimously

3. BUSINESS ARISING FROM THE MINUTES - None

4. NEW BUSINESS

A. Introduction of Student Representative

Superintendent Langstraat introduced Student Representative, Ben Rutkowski, from Victoria High Secondary School. Ben then introduced himself and provided the Committee with a little background information about himself. Ben also said that he looked forward to attending October's Standing Committee meetings and also the Board meeting.

B. Inclusive Learning

Associate Superintendent, Deb Whitten, showed a PowerPoint presentation, as well as a memo, that provided background information and an overview of the work plan and strategies to support inclusion in the District for all learners. Associate Superintendent Whitten stated that the Learning Support Team continues to work with School Based Teams and Administration to ensure each school has systems in place to access supports and ensure services are made available within our district and the community at large.

Trustees asked questions of clarification and provided feedback.

On behalf of the trustees, Chair Whiteaker thanked Associate Superintendent Whitten, the Learning Support Team and the Learning Team for all the work they have put into place to ensure all students receive equitable supports and are challenged in their physical, social and academic learning community.

C. Truth & Reconciliation

Deputy Superintendent, Shelley Green, provided background information and explained the goals in regard to the work currently being done in the district as well as future recommended initiatives. She also provided all trustees with a Truth and Reconciliation binder. Deputy Superintendent Green stated that this school year, every Education Policy and Directions Committee will have Truth and Reconciliation on the agenda and will be adding information to trustees' binders at each Ed Policy meeting. The purpose of addressing Truth and Reconciliation at each meeting will be to:

- review the recommendations of the commission;
- examine how the new curriculum responds to these recommendations;
- receive information in regard to the variety of initiatives in our school district that respond to the recommendations;
- hear from representatives from our Nations in response to the recommendations;
- review other initiatives that connect and respond to the recommendations.

Trustees asked questions of clarification and provided feedback.

D. School Family Groups

Trustee McNally explained her rationale and provided background information for presenting this motion.

It was moved by Trustee McNally:

That Board of Education of School District No. 61 (Greater Victoria) change every instance of "School Family Groups" on the SD61 website and in other communications to "School Catchment Pathways."

Trustees discussed the motion. The motion will be referred to the Student Registration and Transfer Committee.

E. SOGI (Sexual Orientation and Gender Identity)

Trustee Watters provided background information for presenting this motion.

It was moved by Trustee Watters:

That Board of Education of School District No. 61 (Greater Victoria) publish a letter, as per the BCSTA message of support to Boards of Education, for SOGI policies and initiatives in fostering safer and more inclusive communities for all British Columbians.

Trustees discussed the motion. The motion will be referred to the October 23rd Board Meeting.

5. NOTICE OF MOTIONS - None

6. GENERAL ANNOUNCEMENTS - None

7. ADJOURNMENT

It was moved by Trustee Orcherton

That the meeting be adjourned.

Motion Carried Unanimously

The meeting adjourned at 8:25 p.m.

MEMO

From: Deb Whitten, Associate Superintendent

To: Education Policy Committee

Date: November 6, 2017

RE: Supports for children and families in elementary school

The purpose of this memo is to provide a report and recommendation on elementary counselling supports as per the September 25, 2017 Board motion:

That the Board of Education of School District No. 61 (Greater Victoria) request that the Superintendent provide a report and recommendation on elementary counselling supports for elementary children and their families for the November 2017 Education Policy and Directions meeting.

The Superintendent and I met with elementary counsellors to discuss current supports for elementary children and their families. The counsellors shared current struggles with regards to the staffing allocations and the time required to create and maintain files for students with a 'H' designation (Intensive Behaviour Intervention/Serious Mental Illness).

As a result changes have been made regarding the submission of the files for students with an 'H' designation. In addition to these changes, the Superintendent and I have explored other options to increase the support for students and their families in elementary schools.

There are three models are: a 'Base + model' of support for elementary schools; a 'Whole School Inclusive Service Delivery model'; and a 'Profile' funding structure for the 'H' designation. The models will provide sustainable, proactive and preventative counselling and supports to students and families in elementary school.

Recommendations:

1. The Superintendent and Associate Superintendent Whitten work with elementary principals and their staff to identify schools interested in implementing a 'Whole School Inclusive Service Delivery' model for the 2018-2019 school year.

2. The Superintendent and Associate Superintendent Whitten work with the Inclusive Learning Team and the Ministry of Education to provide profile funding to schools for students with an 'H' Ministry designation.
3. The Superintendent and Associate Superintendent Whitten continue to meet with the itinerant staff, school based teams and elementary principals to discuss other supports including the Base + model.



One *Learning* Community



Supports for students and families in our Elementary schools



Goal 1

Provide meaningful and purposeful educational opportunities for vulnerable students with diverse needs while considering the physical, social-emotional and academic domains.



Goal 2

Support the mental health needs and well-being of all students within an inclusive learning model.



Current Counselling Supports in Elementary School

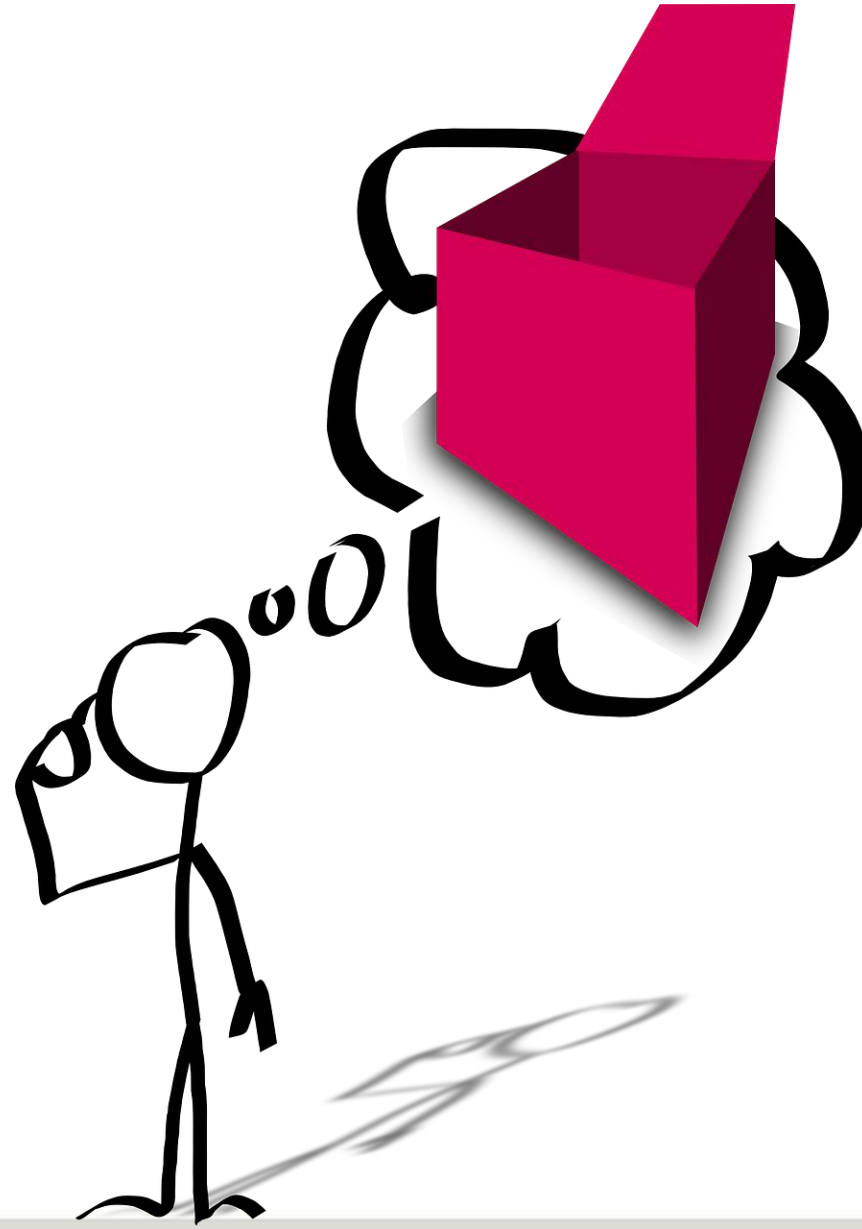
| Elementary Schools | 2017 Counsellor FTE | 2017 YFC Counselling |
|----------------------------|---------------------|----------------------|
| Braefoot | 0.2 | |
| Campus View | 0.4 | |
| Cloverdale | 0.3 | 0.6 |
| Craigflower | 0.2 | 1 |
| Doncaster | 0.4 | |
| Eagle View | 0.2 | |
| Frank Hobbs | 0.3 | |
| George Jay | 0.4 | 2.114 |
| Hillcrest | 0.3 | |
| James Bay | 0.2 | 0.495 |
| Lake Hill | 0.2 | |
| Macaulay | 0.4 | 1 |
| Margaret Jenkins | 0.5 | |
| Marigold | 0.3 | |
| Mckenzie | 0.2 | |
| Northridge | 0.3 | |
| Oaklands | 0.5 | |
| Quadra | 0.4 | 0.6 |
| Rogers | 0.3 | |
| Sir James Douglas | 0.5 | |
| South Park | 0.2 | |
| Strawberry Vale | 0.3 | |
| Tillicum | 0.4 | 0.714 |
| Torquay | 0.3 | |
| Victoria West | 0.2 | 0.7 |
| View Royal | 0.3 | |
| Willows | 0.6 | |
| Total | 8.8 | |
| | | |
| District YFC | | 1 |
| District Counsellor | 1 | |

Other examples of current supports for students and families

- Social Emotional Wellness Advocate
- Safe contact – SOGI
- Educating the Heart and Mind Series
- Childhood Anxiety: Empowering Strategies and Effective Support
- Mindfulness Training for Teachers



How might we support
students and families
differently?



Base + Counselling Support Model

| Elementary Schools | 2017 Counsellor FTE | 2018 Base + | YFC 2020 |
|----------------------|---------------------|-------------|-------------|
| Braefoot | 0.2 | 0.5 | 0.5 |
| Campus View | 0.4 | 0.7 | 0.5 |
| Cloverdale | 0.3 | 0.5 | 0.5 |
| Craigflower | 0.2 | 0.5 | 0.5 |
| Doncaster | 0.4 | 0.6 | 0.5 |
| Eagle View | 0.2 | 0.5 | 0.5 |
| Frank Hobbs | 0.3 | 0.5 | 0.5 |
| George Jay | 0.4 | 0.5 | 0.5 |
| Hillcrest | 0.3 | 0.5 | 0.5 |
| James Bay | 0.2 | 0.5 | 0.5 |
| Lake Hill | 0.2 | 0.5 | 0.5 |
| Macaulay | 0.4 | 0.6 | 0.5 |
| Margaret Jenkins | 0.5 | 0.7 | 0.5 |
| Marigold | 0.3 | 0.5 | 0.5 |
| Mckenzie | 0.2 | 0.5 | 0.5 |
| Northridge | 0.3 | 0.5 | 0.5 |
| Oaklands | 0.5 | 0.7 | 0.5 |
| Quadra | 0.4 | 0.6 | 0.5 |
| Rogers | 0.3 | 0.5 | 0.5 |
| Sir James Douglas | 0.5 | 0.7 | 0.5 |
| South Park | 0.2 | 0.5 | 0.5 |
| Strawberry Vale | 0.3 | 0.5 | 0.5 |
| Tillicum | 0.4 | 0.5 | 0.5 |
| Torquay | 0.3 | 0.5 | 0.5 |
| Victoria West | 0.2 | 0.5 | 0.5 |
| View Royal | 0.3 | 0.5 | 0.5 |
| Willows | 0.6 | 0.8 | 0.5 |
| Total | 8.8 | 14.9 | 13.5 |
| | | 1 to 584.5 | |

Whole School Inclusive Service Delivery

Elementary/ Middle School
Population 370-400

4 FTE - LST
11 EAGS
18 Divisions

K Pod - .75 LST
Gr. 1 Pod - .75 LST
Gr. 2 Pod - .75 LST
Gr. 3 Pod - .75 LST
Gr. 4 Pod - .60 LST
Gr. 5 Pod - .60 LST


Educational Assistant


Teacher


Learning Support Teacher

Kindergarten



Grade 1



Grade 2



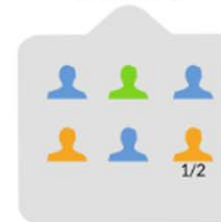
Floating



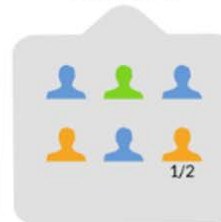
Grade 3



Grade 4



Grade 5



Counsellor Supports
ELL Supports
YFC Supports

SLP Supports
Psychologist Supports
DLST Supports

Profile Block Funding

Level 3 funding for students with Intensive Behaviour Intervention/Serious Mental Illness will be provided without the requirement to prepare and submit a file.

Case Managers and will now have more time to support the students and track qualitative data based on a strength based model.

Discover, Dream, Design, Destiny session

Suggestions from our itinerant staff:

- Ensure there is space in every school and create a space in each family of schools to meet as a family
- Identify and Share Best Practices – support co-teaching opportunities with all staff
- Support our new Learning Support Teachers through a family of schools model
- Add hours to EAGs in each Elementary School to work in collaboration with itinerant staff
- Re-examine case loads for Elementary Counsellors, and all itinerant staff



Recommendations:

1. The Superintendent and Associate Superintendent Whitten work with Elementary Principals and their staff to identify schools interested in implementing a 'Whole School Inclusive Service Delivery' model for the 2018-2019 school year.
2. The Superintendent and Associate Superintendent Whitten work with the Inclusive Learning Team and the Ministry of Education to provide profile funding to schools for students with a 'H' Ministry designation.
3. The Superintendent and Associate Superintendent Whitten continue to meet with the itinerant staff, school based teams and elementary principals to discuss other supports including the Base + model.

