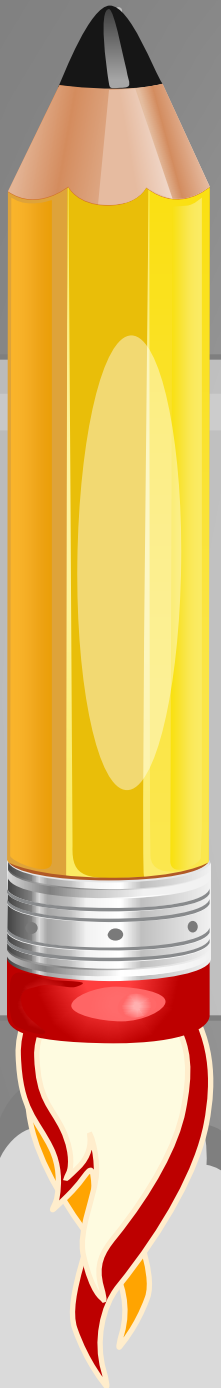




One *Learning* Community

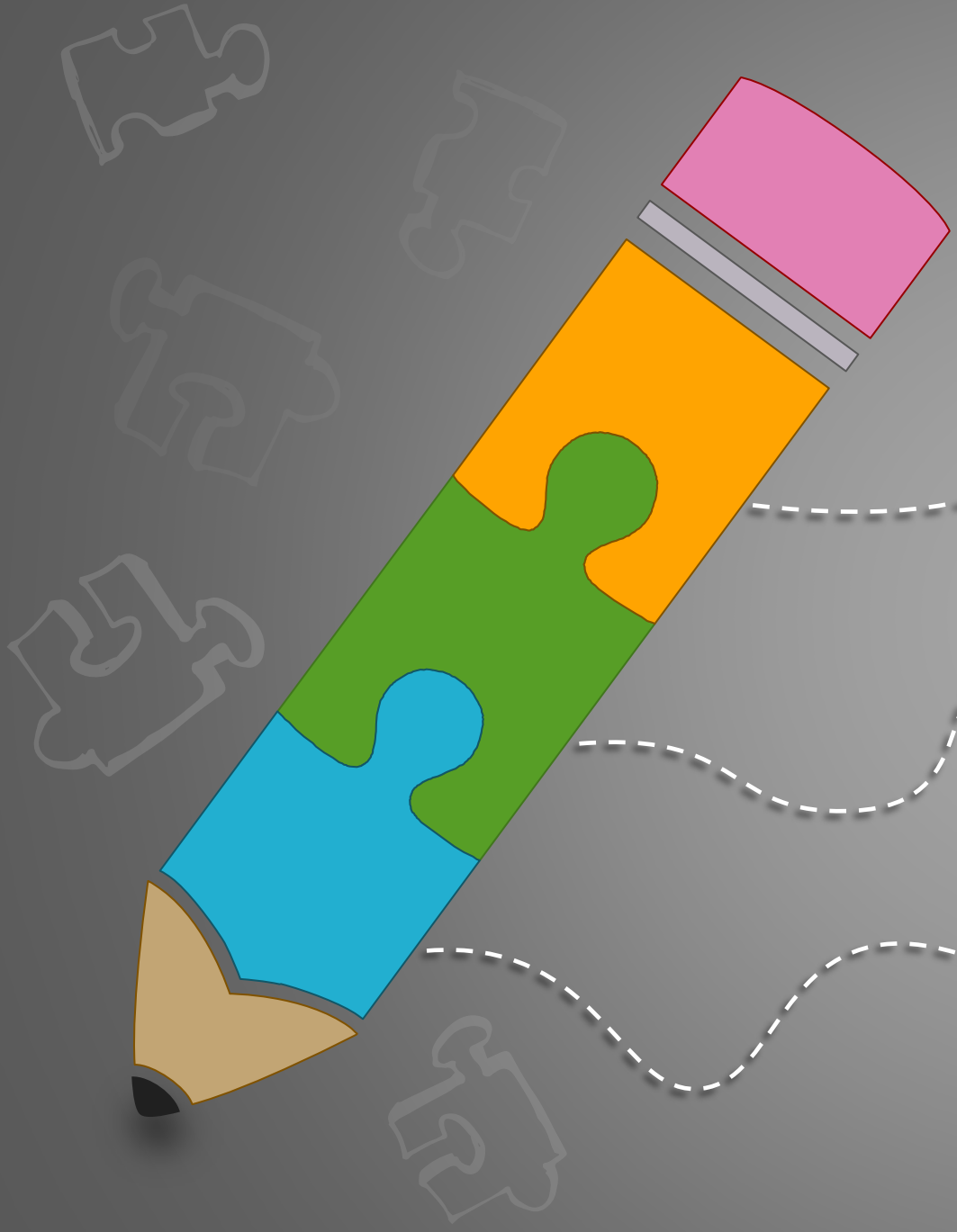


Greater
VICTORIA
School District



Early Literacy K-3 Pilot Overview

How do we ensure that we are providing highly effective early literacy in all classrooms across our district?



75%

Of our students will be successful in a literacy rich classroom environment

25%

Of our students will struggle with literacy

How do we ensure... that ALL students in ALL classrooms thrive and are successful in Literacy?

Give Literacy
meaning... not
teaching skills in
isolation

Whole-Part-Whole

Constantly moving
through the
Whole-Part-Whole
model

Holistic approach
when teaching
Literacy

Regie Routman

Our brains look for patterns...
We need to see the
BIG PICTURE
to understand how things fit
together

Yet,
we still have students
struggling in Literacy...

Its time to **REFOCUS**
our efforts and deepen
our understanding of
literacy
to ensure ALL student
are successful.

Literacy skills are
taught in classrooms
throughout our district.

We have expert literacy
teachers in many
classrooms.

Our Plan...

To select 5 schools that represent a cross section of Elementary Schools in our district



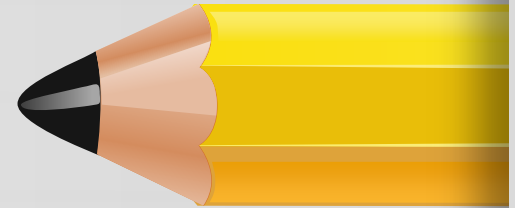
Teacher Voice & Expertise

Groups of teachers that will work collaboratively together to examine literacy in their schools



Create Literacy Teams

Develop a collaborative inquiry question that will guide literacy practice in each school



Design a Literacy Plan

A framework that supports teachers to ensure exemplary Literacy programs occur in all Elementary Schools



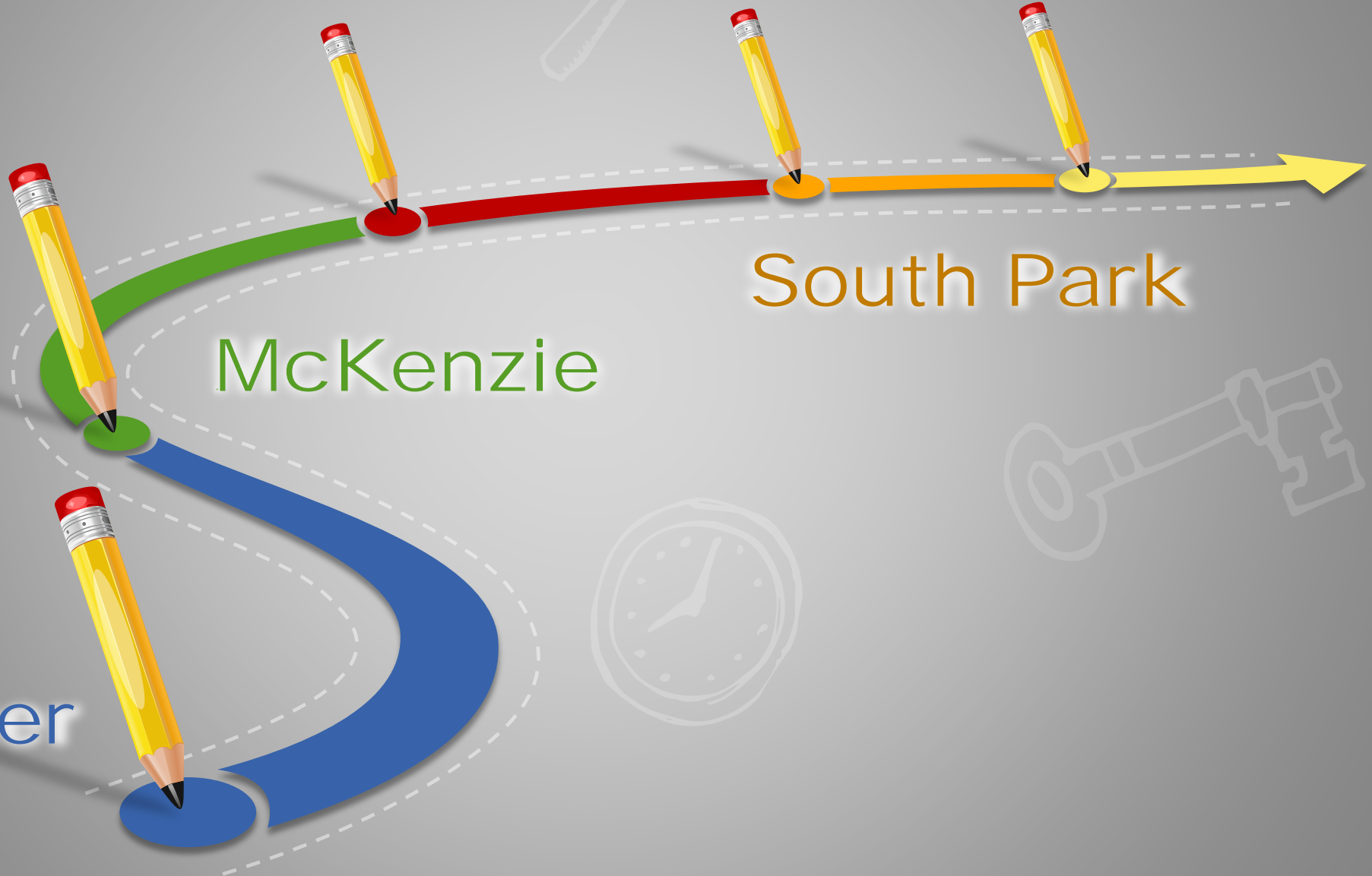
Oaklands

View Royal

South Park

McKenzie

Doncaster

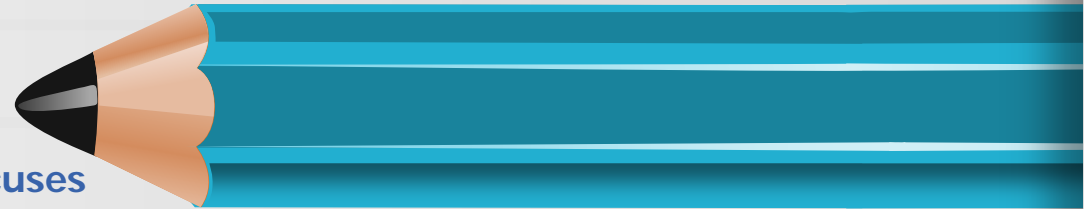


Pilot Planning Sessions

Session 1

To understand more deeply what teaching highly effective literacy involves

Literacy Teams created a collaborative inquiry goal that is personalized to their school and focuses on student learning



Session 2

Understanding more clearly how levels of support are created within the classroom

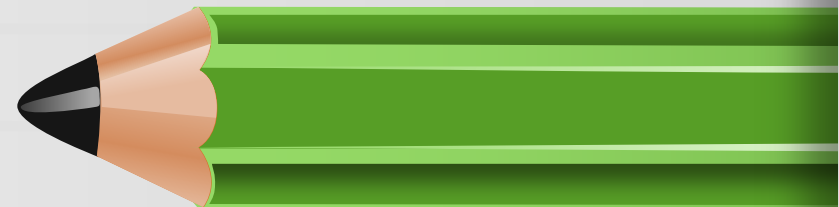
Evidence and Research-based
Teacher Expertise
Informed practise based on assessment & data



Session 3

Collaborative Design Model

Develop framework and sequence of Pro D that will begin for Elem schools in September 2017



Early Literacy

Elements of Effective Instruction

- Research-based
- Informed by Assessment
- Variety of materials & resources
- Meaningful-in context
- Engaging & Fun

Skills & Strategies Needed for Success

- Alphabet Knowledge
- Phonemic Awareness
- Word Work-Vocabulary
- Comprehension
- Fluency

Four Domains

- Reading
- Writing
- Listening
- Speaking

Gradual Release of Responsibility

- Modeled
- Shared
- Guided
- Independent

Important things for Educators to always think about in order to improve student learning in Literacy...



High Quality Professional Learning



Leading Learning!

High Quality Literacy

Planning Together

Collaboration

Thank you !