

2017–2018 SOUTH ISLAND PARTNERSHIP CAREER TRANSITION PROGRAMS GUIDE



**Northport Road After the Rain—Denny Moutray copyright 2009*

*All trades training students are to be registered with the ITA as YOUTH TRAIN IN TRADES students.
Available seats are held up to 2 months prior to the intake date and are available to qualified applicants only.*

SOUTH ISLAND PARTNERSHIP



South Island Partnership Career Transition Programs Guide

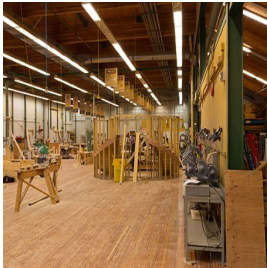
TABLE OF CONTENTS

Page	Title
3	Construction Trades Career Transition Pathways
8	Culinary Arts Career Transition Pathways
9	Health Career Transition Pathways
11	Mechanical Trades Career Transition Pathways
13	Metal Trades Career Transition Pathways
15	Technology Career Transition Pathways

CONSTRUCTION TRADES CAREER TRANSITION PATHWAYS*

CARPENTRY Level 1

7 Week
Apprenticeship



TRN 12A CARP 4
TRN 12B CARP 4
TOTAL CREDITS 8

Admission Requirements

- * Register as a Youth Apprentice with the Industry Training Authority (Youth Train in Trades)
- * Register in Secondary School Apprentice (YOUTH WORK IN TRADES) Carpentry
- * Substantial directly related YOUTH WORK IN TRADES work-based training hours (minimum 800 wbt hours recommended) and recommendation from employer sponsor
- * Participate in a SIP Orientation

OR

- * Successful completion of the school-based portion of an YOUTH TRAIN IN TRADES carpentry program
- * Minimum 30 hours of directly related work experience

Seat Availability

September	2	February	2	July	16
November	2	April	2		
January	2	June	2		

Interurban Campus

Credential

Recommended Secondary Courses

- * Wood 9/10
- * CJ 11/12
- * FOM 11
- * Drafting 11

Career Opportunities

- * Carpenter
- * Framing Carpenter
- * Finishing Carpenter
- * Formwork Carpenter

CARPENTRY Foundation

25 Weeks



TRN 12A CARP 4
TRN 12B CARP 4
TRN 12C CARP 4
TRN 12D CARP 4
TRN 12E CARP 4
TRN 12F CARP 4
TRN 12G CARP 4
TOTAL CREDITS 28

Admission Requirements

- * Register as a Youth Apprentice with the Industry Training Authority (Youth Train In Trades)
- * English 11 (minimum of 60%) or assessment; AWM 11 or PREC 11 or FOM 11 (minimum of 60%)
- * 30 hours of directly related work experience and recommendation from a counsellor/program teacher
- * Participate in a SIP Orientation

Approx. Cost of Course Materials/ Other Expenses: \$800/\$460

Seat Availability

January	2	July	2
April	2	October	2

Interurban Campus

Certificate — Credential

Recommended Secondary Courses

- * Wood 9/10
- * CJ 11/12
- * Drafting 12

Career Opportunities

- * Carpenter
- * Framing Carpenter
- * Finishing Carpenter
- * Formwork Carpenter

CONSTRUCTION TRADES CAREER TRANSITION PATHWAYS* —CONTINUED

ELECTRICAL Level 1

10 Week
Apprenticeship



TRN 12A ELEC 4
TRN 12B ELEC 4
TRN 12C ELEC 4
TOTAL CREDITS 12

Admission Requirements

- * Register as a Youth Apprentice with the Industry Training Authority (Youth Train in Trades)
- * Completion of electrical courses in partnering secondary schools
- * Min 30 hours of directly related work experience & recommendation from school based electrical program teacher or counsellor
- * Participate in a SIP Orientation

OR

- * Register in Secondary School Apprentice (YOUTH WORK IN TRADES) Electrical
- * Substantial directly related YOUTH WORK IN TRADES work-based training hours (minimum 800 wbt hours recommended) and recommendation from employer sponsor

Seat Availability

July	11	Mar	2
Oct	2	May	2
Jan	2	July	16

Interurban Campus

Credential

Recommended Secondary Courses

- * Wood/Metal 9/10
- * Drafting 11/12
- * CJ 11/12
- * Electrical 11/12
- * Physics 11/12

Career Opportunities

- * Electrician
- * Green Energy Resource Manager
- * Solar Power Systems Analyst
- * Solar Installer
- * Wind Turbine maintenance, inspection, and repair

ELECTRICAL Foundation

25 Weeks



TRN 12A ELEC 4
TRN 12B ELEC 4
TRN 12C ELEC 4
TRN 12D ELEC 4
TRN 12E ELEC 4
TRN 12F ELEC 4
TRN 12G ELEC 4
TOTAL CREDITS 28

Admission Requirements

- * Register as Youth Apprentice with the Industry Training Authority (Youth Train in Trades)
- * English 12 (minimum 60%) or assessment
- * AWM 11 or PRECAL 11 or FOM 11 (minimum 60%) or assessment
- * 30 hours of directly related work experience and recommendation from counsellor or teacher
- * Participate in a SIP Orientation

Approx. Cost of Course Materials/ Other Expenses: \$650/\$200

Seat Availability

September	2
November	2
March	12

Interurban Campus

*Other dates upon request.

Certificate — Credential

Recommended Secondary Courses

- * Wood/Metal 9/10
- * Drafting 11/12
- * CJ 11/12
- * Electrical 11/12
- * Physics 11/12

Career Opportunities

- * Electrician
- * Green Energy Resource Manager
- * Solar Power Systems Analyst
- * Solar Installer
- * Wind Turbine maintenance, inspection, and repair

CONSTRUCTION TRADES CAREER TRANSITION PATHWAYS* —CONTINUED

HORTICULTURE Foundation

40 Weeks



TRN 12A HORT	4
TRN 12B HORT	4
TRN 12C HORT	4
TRN 12D HORT	4
TRN 12E HORT	4
TRN 12F HORT	4
TRN 12G HORT	4
TRN 12H HORT	4
TRN 12I HORT	4
TRN 12J HORT	4
TRN 12K HORT	4
TRN 12L HORT	4
TOTAL CREDITS	48

Admission Requirements

- * Register as a Youth Apprentice with the Industry Training Authority (Youth Train in Trades)
- * English 10 (minimum 60%) or assessment
- * AWM 10 (minimum 67%); FMP 10 (60% minimum) or assessment
- * 30 hours of directly related work experience and recommendation from counsellor or teacher
- * Submission of a Horticulture Portfolio (details on the Camosun Horticulture Technician Admission Requirements webpage)
- * Participate in a SIP Orientation

OR

- * Registered in Secondary School Apprentice (YOUTH WORK IN TRADES) Horticulture—

***Note: There are 30-40 class field trips through out the program. Students will need to have their own transportation for many of these trips. Therefore, students wanting to register in this program should have 'N' license and a vehicle.**

Seat Availability
Royal Roads University

July	2
------	---

Credential

Recommended Secondary Courses

- * Biology 11
- * Biology 12
- * Chemistry 11
- * Wood/Metal 9/10
- * CJ 11/12

Career Opportunities

- * Golf Course Horticulturalist
- * Landscaping architect
- * Silviculture
- * Production Horticulture

JOINERY Level 1

7 Week
Apprenticeship



TRN 12A JOIN	4
TRN 12B JOIN	4
TOTAL CREDITS	8

Admission Requirements

- * Register as a Youth Apprentice with the Industry Training Authority (Youth Train in Trades)
- * Completion of Joinery courses in a partnering secondary school
- * Minimum 30 hours of directly related work experience
- * Sponsored by School District or a registered Secondary School Apprentice (YOUTH WORK IN TRADES) in cabinetmaking
- * Participate in a SIP Orientation

Seat Availability

July 2018	16
-----------	----

Interurban Campus
Certificate — Credential

Recommended Secondary Courses

- * Wood/Metal 9/10
- * CJ 11/12
- * Drafting 11/12

Career Opportunities

- * Furniture Manufacturer
- * Furniture Designer
- * Architectural Millwork
- * Cabinetmaker
- * Industrial Cabinetmaker
- * Finishing carpenter
- * Shipwright

CONSTRUCTION TRADES CAREER TRANSITION PATHWAYS* —CONTINUED

FINE FURNITURE

**40 Week
Foundation**



TRN 12A FFUR	4
TRN 12B FFUR	4
TRN 12C FFUR	4
TRN 12D FFUR	4
TRN 12E FFUR	4
TRN 12F FFUR	4
TRN 12G FFUR	4
TRN 12H FFUR	4
TRN 12I FFUR	4
TRN 12J FFUR	4
TRN 12K FFUR	4
TRN 12L FFUR	4
TOTAL CREDITS	48

Admission Requirements

- * Applicants must take the six-element 'Fine Furniture Readiness' Assessment. The first two sections, Reading Comprehension and Vocabulary, relate directly to course content. This test also includes questions on math and measurement
- * Submit a portfolio containing samples, slides or photographs of craft work indicating design and hand skills
- * 30 hours of directly related work experience and recommendation from counsellor or teacher
- * Register as a Youth Apprentice with the Industry Training Authority (YOUTH TRAIN IN TRADES)
- * Participate in a SIP Orientation

Seat Availability

September	2
-----------	---

Interurban Campus

Certificate — Credential

Recommended Secondary Courses

- * Wood/Metal 9/10
- * CJ 11/12
- * Drafting 11/12

Career Opportunities

- * Furniture Manufacturer
- * Shipwright
- * Finishing Carpenter
- * Furniture Design
- * Architectural Millwork

PLUMBING & PIPING TRADES Level 1

**6 Week
Apprenticeship**



TRN 12A FFUR	4
TRN 12B FFUR	4
TOTAL CREDITS	8

Admission Requirements

- * Register as a Youth Apprentice with the Industry Training Authority (Youth Train in Trades)
- * Register in Secondary School Apprentice (YOUTH WORK IN TRADES) Plumbing/Piping
- * Substantial directly related YOUTH WORK IN TRADES work-based training hours (minimum 800 wbt hours recommended) and recommendation from employer sponsor
- * Participate in a SIP Orientation

Approx. Cost of Course Materials: \$320

Seat Availability

November	2	Other seats available upon request
----------	---	------------------------------------

Interurban Campus

Credential

Recommended Secondary Courses

- * Wood/Metal 9/12
- * Metal Fab 11/12
- * Drafting 11/12
- * Physics 11/12

Career Opportunities

- * Plumbing wholesale supply
- * Solar hot water installer
- * Solar radiant heat installer
- * Solar system installation
- * Steamfitter
- * Waste water treatment
- * Well pump installation

CONSTRUCTION TRADES CAREER TRANSITION PATHWAYS* —CONTINUED

PLUMBING AND PIPING Foundation

30 Weeks



TRN 12A Plum	4
TRN 12B Plum	4
TRN 12C Plum	4
TRN 12D Plum	4
TRN 12E Plum	4
TRN 12F Plum	4
TRN 12G Plum	4
TRN 12H Plum	4
TRN 12I Plum	4
TOTAL CREDITS	36

Admission Requirements

- * English 11 (minimum 60%) or assessments
- * AWM 11 or PRECAL or FOM 11 (minimum 60%) or assessment
- * Register as a Youth Apprentice with the Industry Training Authority (Youth Train in Trades)
- * 30 hours of directly related work experience and recommendation from counsellor or teacher
- * Participate in a SIP Orientation

Approx. Cost of Course Materials/ Other Expenses: \$600/\$160

Seat Availability

February	6	Other Dates available upon request
----------	---	------------------------------------

Interurban Campus

Certificate — Credential

Recommended Secondary Courses

- * Wood/Metal 9/12
 - * Metal Fab 11/12
 - * Drafting 11/12
 - * Physics 11/12
- Career Opportunities**
- * Plumbing wholesale supply
 - * Solar hot water installer
 - * Solar radiant heat installer
 - * Solar system installation
 - * Steamfitter
 - * Waste water treatment
 - * Well pump installation

REFRIGERATION & AIR CONDITIONING MECHANIC Foundation

30 Weeks



TRN 12A Refrig	4
TRN 12B Refrig	4
TRN 12C Refrig	4
TRN 12D Refrig	4
TRN 12E Refrig	4
TRN 12F Refrig	4
TRN 12G Refrig	4
TRN 12H Refrig	4
TRN 12I Refrig	4
TOTAL CREDITS	36

Admission Requirements

- * English 11 (minimum 60%)
- * AWM 11 or PRECAL 11 or FOM 11 (minimum 60%) or assessment
- * Register as a Youth Apprentice with the Industry Training Authority (Youth Train in Trades)
- * 30 hours of directly related work experience and recommendation from counsellor or teacher
- * Participate in a SIP Orientation

Approx. Cost of Course Materials/ Other Expenses: \$600/\$160

Seat Availability

September	2
-----------	---

Interurban Campus

Certificate — Credential

Recommended Secondary Courses

- * Wood/Metal 9/10
- * Metal Fab 11/12
- * Drafting 11/12
- * Physics 11/12

Career Opportunities

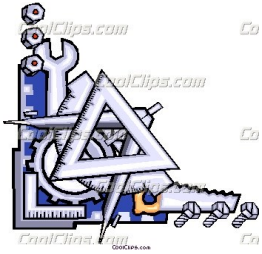
- * Appliance Repair
- * Refrigeration & Air Conditioning Mechanic
- * Heat Pump Technician

CONSTRUCTION TRADES CAREER TRANSITION PATHWAYS* —CONTINUED

TRADES AWARENESS SKILLS & KNOWLEDGE (TASK)

High School
semester

TST 12A TASK 4
TST 12B TASK 4
TOTAL CREDITS 8



Admission Requirements

- * You may apply for this program if you are currently in grade 11 or 12
- * To apply, contact the career coordinator at the location you wish to attend
- * After submitting an application, you will be invited for an interview to ensure this program is a good fit for your goals and expectations

Recommended Secondary Courses

- * Wood/Metal 9/10
- * CJ 11/12

Seat Availability

	18		18
September	SD 62 SD 63	February	SD 61 SD 62 SD 63 SD 64 SD 79

Interurban Campus Certificate

Career Opportunities

- * Trades careers

CULINARY ARTS CAREER TRANSITION PATHWAYS

PROFESSIONAL COOK Level 1

6 Week
Apprenticeship



TRN 12A Cook 4
TRN 12B Cook 4
TOTAL CREDITS 8

Admission Requirements

- * Register as Youth Apprentice with the Industry Training Authority (Youth Train in Trades)
- * Completion of culinary courses in partnering secondary schools
- * Substantial directly related work experience and recommendation from a culinary teacher

OR

- * Register as a Secondary School Apprentice (YOUTH WORK IN TRADES) Professional Cook
- * Substantial directly related YOUTH WORK IN TRADES work-based training hours (minimum 600 wbt hours recommended) and recommendation from employer sponsor

OR

- * Students are to participate in a school-based PC-1 YOUTH TRAIN IN TRADES program delivered using the

Seat Availability

February	2		
February E-pprentice	tbd	September E-pprentice	tbd

Interurban Campus

Credential

Recommended Secondary Courses

- * Foods 9/10
- * Cafeteria 10/11/12
- * Cook Training 11/12

Career Opportunities

- * Chef de Partie
- * Demi Chef de Partie
- * Executive Chef
- * First cook
- * Research Chef
- * Catering

PROFESSIONAL COOK Foundation

28 Weeks



TRN 12A Cook 4
TRN 12B Cook 4
TRN 12C Cook 4
TRN 12D Cook 4
TRN 12E Cook 4
TRN 12F Cook 4
TRN 12G Cook 4
TRN 12H Cook 4
TOTAL CREDITS 32

Admission Requirements

- * English 10 (minimum of 60%) or assessment
- * AWM 10 (minimum of 67%) or FMP 10 (minimum of 60%)
- * FoodSafe Level 1
- * Register as a Youth Apprentice with the Industry Training Authority (Youth Train in Trades)
- * Substantial directly related work experience with supporting letter from employer (240 hours recommended)
- * Participate in a SIP Orientation

Seat Availability

January	4	April	4
September	4		

Interurban Campus

Certificate — Credential

Recommended Secondary Courses

- * Foods 9/10
- * Cafeteria 10/11/12
- * Cook Training 11/12

Career Opportunities

- * Chef de Partie
- * Demi Chef de Partie
- * Executive Chef
- * First cook
- * Research Chef

HEALTH CAREER TRANSITION PATHWAYS

COMMUNITY SUPPORT & EDUCATIONAL ASSISTANT (CSEA)

10 Months



PSIB 12A CSEA	4
PSIB 12B CSEA	4
PSIB 12C CSEA	4
PSIB 12D CSEA	4
PSIB 12E CSEA	4
PSIB 12F CSEA	4
PSIB 12G CSEA	4
PSIB 12H CSEA	4
PSIB 12I CSEA	4
PSIB 12J CSEA	4
PSIB 12K CSEA	4
PSIB 12L CSEA	4
TOTAL CREDITS	48

Admission Requirements

- * English 12 (minimum 67%) or assessment or currently enrolled in English 12 with counsellor and English teacher recommendation
- * 40 hours of directly-related volunteer experience. Your volunteer experience must be with individuals in the community (school or otherwise) who have developmental and other disabilities such as physical, sensory and brain-based disabilities.
- * A criminal record check (CRC), including Vulnerable Sector (VS) search, is a program participation requirement. You will be sent instructions about the CRC process that need to be followed. Criminal record checks done outside the college are not accepted
- * Participate in an interview with SIP Coordinator and CSEA Department Head

Costs: Texts and Modules /Other Expenses: \$450/\$250

Seat Availability

September	2
-----------	---

Lansdowne Campus

Certificate

Recommended Secondary Courses

- * Student Leadership 11/12
- * Psychology 11
- * Peer Support

Career Opportunities

- * Community Centre Program Assistant
- * Community Support Worker
- * Crisis Intervention Worker
- * Educational Assistant
- * Mental Health Care Worker

HEALTH CARE ASSISTANT (HCA)

29 Weeks



PSIB 12A HCA	4
PSIB 12B HCA	4
PSIB 12C HCA	4
PSIB 12D HCA	4
PSIB 12E HCA	4
PSIB 12F HCA	4
PSIB 12G HCA	4
PSIB 12H HCA	4
TOTAL CREDITS	32

Admission Requirements

- * English 11 (minimum 60%) or assessment
- * 30 hours related work experience with the elderly and recommendation from counsellor or teacher
- * A **criminal record check** (CRC) clearance. You'll be sent instructions about the CRC process that must be followed. Criminal record checks done outside the college are NOT accepted.
- * Participate in an interview with SIP Coordinator and HCA Department Head
- * You are strongly encouraged to complete the following requirements **before** the program
 1. **Standard First Aid** Certificate (valid for 3 years).
 2. **CPR Level C** (valid for 1 year; must be kept current throughout program).
 3. **Foodsafe** certificate (expires after 5 years).
 4. Hepatitis B and the flu **vaccines** are highly recommended and are available at your local health clinic or through your physician.

Approx. Cost of Course Materials/ Other Expenses: \$225/\$675

Seat Availability

Sep	6
Apr	6

Lansdowne Campus

Certificate

Recommended Secondary Courses

- * Psychology 11
- * Biology 11/12
- * Peer Support

Career Opportunities

- * Health Care Assistant
- * Private Facility Care Attendant
- * Residential Care Attendant

HEALTH CAREER TRANSITION PATHWAYS—CONTINUED

INDIGENOUS FAMILY SUPPORT (IFS)

40 Weeks



PSIB 12A IFS	4
PSIB 12B IFS	4
PSIB 12C IFS	4
PSIB 12D IFS	4
PSIB 12E IFS	4
PSIB 12F IFS	4
PSIB 12G IFS	4
PSIB 12H IFS	4
PSIB 12I IFS	4
PSIB 12J IFS	4
PSIB 12K IFS	4
PSIB 12L IFS	4
TOTAL CREDITS	48

Admission Requirements

- * Aboriginal ancestry
- * English 12 (minimum 67%) or assessment
- * 40 hours of directly-related volunteer experience.
- * A criminal record check (CRC), including Vulnerable Sector (VS) search, is a program participation requirement. You'll be sent instructions about the CRC process that need to be followed. Criminal record checks done outside the college aren't accepted
- * Participate in an interview with SIP Coordinator and IFS Department Head

Approx. Cost of Course Materials/ Other Expenses: \$700/\$500

Seat Availability

September	2
-----------	---

Lansdowne Campus

Certificate

Recommended Secondary Courses

- * Psychology 11
- * FN 12
- * Student Leadership 11/12

Career Opportunities

- * Work in areas of community support, health, education, & human services
- * Can lead to degrees in social work, child & youth care, indigenous studies, and education

PATHWAYS FOR LIFE Course

6 Weeks
1/2 Days



TOTAL CREDITS 0

Admission Requirements

- * Be recommended by School District
- * Be a motivated learner, mature, and an independent traveler
- * Participate in an interview with SIP Coordinator and ACCESS Dept. Head at Camosun College

Cost of materials: TBD

Seat Availability

April (morning or afternoon)	12 Seats per Cohort
------------------------------------	---------------------

Interurban Campus

Career Opportunities

- * Entry Level skills in customer service, food services and gardening
- * Gain awareness of learning, volunteering and employment opportunities

MECHANICAL TRADES CAREER TRANSITION PATHWAYS

AUTOMOTIVE SERVICE TECHNICIAN Level 1

**7 Week
Apprenticeship**



TRN 12A AUTO 4
TRN 12B AUTO 4
TOTAL CREDITS 8

Admission Requirements

- * Register as a Youth Apprentice with the Industry Training Authority (Youth Train in Trades)
- * Substantial directly related YOUTH WORK IN TRADES work-based training hours (minimum 800 wbt hours recommended) and recommendation from employer sponsor
- * Participate in a SIP Orientation

OR

- * Successful completion of the school-based portion of an YOUTH TRAIN IN TRADES AST1 program: SD61 AutoTech, SD79 AST Program)
- * Substantial directly related WBT hours (120+) and recommendations from employer sponsor
- * Participate in a SIP Orientation

Recommended Secondary Courses

- * Mechanics 9/10
- * Auto 11/12
- * Electronics 11/12
- * Metalwork 11/12

Seat Availability

February	TBD
AutoTECH Esq. Sec. & Cow. Sec. May & July Camosun	16
July	16

Interurban Campus

Certificate — Credential

Career Opportunities

- * Automotive Service Technician
- * Service Manager
- * Service Writer
- * Parts Person

AUTOMOTIVE SERVICE TECHNICIAN Foundation

30 Weeks



TRN 12A AUTO 4
TRN 12B AUTO 4
TRN 12C AUTO 4
TRN 12D AUTO 4
TRN 12E AUTO 4
TRN 12F AUTO 4
TRN 12G AUTO 4
TRN 12H AUTO 4
TRN 12I AUTO 4
TOTAL CREDITS 36

Admission Requirements

- * English 11 (minimum of 60%) or assessment
- * AWM 11, PREC 11, FOM 11 (minimum 60%) or assessment
- * Register as a Youth Apprentice with the Industry Training Authority (Youth Train in Trades)
- * 30 hours of directly related work experience and recommendation from a counsellor or teacher
- * Participate in a SIP Orientation

Approx. Cost of Course Materials/ Other Expenses: \$600/\$250

Seat Availability

March	2
Sept	2

Interurban Campus

Certificate — Credential

Recommended Secondary Courses

- * Mechanics 9/10
- * Auto 11/12
- * Electronics 11/12
- * Metalwork 11/12

Career Opportunities

- * Automotive Service Technician
- * Service Manager
- * Service Writer
- * Parts Person

MECHANICAL TRADES CAREER TRANSITION PATHWAYS—CONTINUED

HEAVY MECHANICAL TRADES Foundation

40 Weeks



TRN 12A MECH	4
TRN 12B MECH	4
TRN 12C MECH	4
TRN 12D MECH	4
TRN 12E MECH	4
TRN 12F MECH	4
TRN 12G MECH	4
TRN 12H MECH	4
TRN 12I MECH	4
TRN 12J MECH	4
TRN 12K MECH	4
TRN 12L MECH	4
TOTAL CREDITS	48

Admission Requirements

- * Register as a Youth Apprentice with the Industry Training Authority (Youth Train in Trades)
- * English 11 (minimum 60%) or assessment
- * AWM 11 or PRECAL 11 or FOM 11 (minimum 60%) or assessment
- * 30 hours of directly related work experience and recommendation from counsellor or teacher
- * Participate in a SIP Orientation

Approx. Cost of Course Materials/ Other Expenses: \$800/\$325

Seat Availability

September	3
-----------	---

Interurban Campus

Certificate — Credential

Recommended Secondary Courses

- * Mechanics 9/10
- * Auto 11/12
- * Electronics 11/12
- * Metalwork 11/12
- * Welding 11/12

Career Opportunities

- * Heavy Duty Equipment Technician
- * Truck and Transport Mechanic
- * Diesel Engine Mechanic

METAL TRADES CAREER TRANSITION PATHWAYS

METAL FABRICATION Level 1

**5 Week
Apprenticeship**



TRN 12A Mfab	4
TRN 12B Mfab	4
TOTAL CREDITS	8

Admission Requirements

- * Register as a Youth Apprentice with the Industry Training Authority (Youth Train in Trades)
- * Register in Secondary School Apprentice (YOUTH WORK IN TRADES) Metal Fabrication
- * Substantial directly related YOUTH WORK IN TRADES work-based training hours (minimum 800 wbt hours recommended) and recommendation from employer sponsor
- * Participate in a SIP Orientation

Approx. Cost of Course Materials: \$325

Seat Availability: Dependent on availability

Interurban Campus

Credential

Recommended Secondary Courses

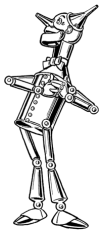
- * Wood Metal 9/10
- * Metal Fab 11/12
- * Drafting 11/12

Career Opportunities

- * Heating
- * Ventilation
- * Architectural Sheet-metal

SHEET METAL Level 1

**6 Week
Apprenticeship**



TRN 12A Smtl	4
TRN 12B Smtl	4
TOTAL CREDITS	8

Admission Requirements

- * Register as a Youth Apprentice with the Industry Training Authority (Youth Train in Trades)
- * Register in Secondary School Apprentice (YOUTH WORK IN TRADES) Sheet Metal
- * Substantial directly related YOUTH WORK IN TRADES work-based training hours (minimum 800 wbt hours recommended) and recommendation from employer sponsor
- * Participate in a SIP Orientation

Approx. Cost of Course Materials: \$75

Seat Availability: Dependent on availability

Interurban Campus

Credential

Recommended Secondary Courses

- * Wood/Metal 9/10
- * Metal Fab 11/12
- * Drafting 11/12

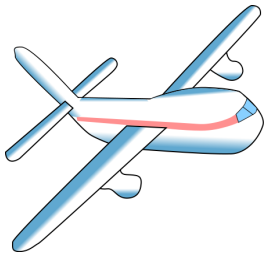
Career Opportunities

- * Heating
- * Ventilation
- * Architectural Sheet-metal

METAL TRADES CAREER TRANSITION PATHWAYS—CONTINUED

SHEET METAL & METAL FABRICATION Foundation

30 Weeks



TRN 12A Smtl	4
TRN 12B Smtl	4
TRN 12C Smtl	4
TRN 12D Smtl	4
TRN 12E Smtl	4
TRN 12F Smtl	4
TRN 12G Smtl	4
TRN 12H Smtl	4
TRN 12I Smtl	4
TOTAL CREDITS	36

Admission Requirements

- * English 11 (minimum 60%) or assessment
- * AWM 11 or PRECAL 11 or FOM 11 (minimum 60%) or assessment
- * Register as a Youth Apprentice with the Industry Training Authority (Youth Train in Trades)
- * 30 hours of directly related work experience and recommendation from counsellor or teacher
- * Participate in a SIP Orientation

Approx. Cost of Course Materials/ Other Expenses: \$300/\$450

Seat Availability

August	2	January	2
--------	---	---------	---

Interurban Campus

Certificate — Credential

Recommended Secondary Courses

- * Wood/Metal 9/10
- * Metal Fab 11/12
- * Drafting 11/12

Career Opportunities

- * Roofing
- * Air conditioning
- * Aircraft sheet metal fabrication and assembly
- * HVAC: Heating
- * Ventilation

WELDING Foundation

28 Weeks



TRN 12A Weld	4
TRN 12B Weld	4
TRN 12C Weld	4
TRN 12D Weld	4
TRN 12E Weld	4
TRN 12F Weld	4
TRN 12G Weld	4
TRN 12H Weld	4
TOTAL CREDITS	32

Admission Requirements

- * English 10 (minimum 60%) or assessment
- * AWM 10 (minimum 67%) or FMP 10 (minimum 60%) or assessment
- * 30 hours of directly related work experience and recommendation from counsellor or teacher
- * Participate in a SIP Orientation

Approx. Cost of Course Materials/ Other Expenses: \$300/\$400

Seat Availability

February	18	July	18
----------	----	------	----

Interurban Campus

Certificate — Credential

Recommended Secondary Courses

- * Wood/Metal 9/10
- * Metal Fab 11/12

Career Opportunities

- * Welder
- * Boilermaker
- * Construction industry
- * Electric industry
- * Fabrication
- * Maintenance technician
- * Mining industry
- * Pulp and paper industries

TECHNOLOGY CAREER TRANSITION PATHWAYS

COMPUTER NETWORK ELECTRONICS TECHNICIAN (CNET)

8 months



PSIB 12A CNET	4
PSIB 12B CNET	4
PSIB 12C CNET	4
PSIB 12D CNET	4
PSIB 12E CNET	4
PSIB 12F CNET	4
PSIB 12G CNET	4
PSIB 12H CNET	4
PSIB 12I CNET	4
PSIB 12J CNET	4
TOTAL CREDITS	40

Admission Requirements

- * FOM 11 or PreCal 11 (minimum 60%) or assessment
- * English 12 (minimum of 60%) or assessment or September enrollment in English 12 with an English teacher recommendation form
- * Participate in an interview with the SIP Coordinator and Computer Engineering Technology Department Head

Cost of modules: \$1500; expendable supplies: \$1000

Seat Availability

September	2
-----------	---

Interurban Campus

Certificate — Credential

Recommended Secondary Courses

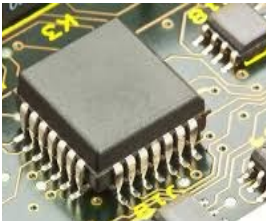
- * Information Technology 11/12
- * Computer Programming 11/12
- * Electronics 11/12

Career Opportunities

- * Installation & maintenance of computer network systems, microprocessor-based equipment, and personal computers

ELECTRONICS & COMPUTER ENGINEERING TECHNOLOGY— RENEWABLE RESOURCES

8 Months



PSIB 12A ECET	4
PSIB 12B ECET	4
PSIB 12C ECET	4
PSIB 12D ECET	4
PSIB 12E ECET	4
PSIB 12F ECET	4
PSIB 12G ECET	4
PSIB 12H ECET	4
PSIB 12I ECET	4
PSIB 12J ECET	4
PSIB 12K ECET	4
PSIB 12L ECET	4
TOTAL CREDITS	48

Admission Requirements

- * PreCal 12 (minimum 67%) or assessment,
- * English 12 (minimum of 60%) or assessment or September enrollment in English 12 with an English teacher recommendation form
- * Physics 11 (minimum 60%)
- * Participate in an interview with the SIP Coordinator and Computer Engineering Technology Department Head

Costs: Textbooks and modules: \$1800; expendable supplies: \$1100

Seat Availability

September	1
-----------	---

Interurban Campus

Certificate — Credential

Recommended Secondary Courses

- * Information Technology 11/12
- * Computer Programming 11/12
- * Electronics 11/12

Career Opportunities

- Computer-aided design (CAD)
- Microelectronics
- Microcontroller system design
- Data gathering, processing and monitoring of renewable systems
- Electronic control systems, robotics
- Design and testing of microelectronics systems

TECHNOLOGY CAREER TRANSITION PATHWAYS

INFORMATION AND COMPUTER SYSTEMS

8 months



PSIB 12A ICS	4
PSIB 12B ICS	4
PSIB 12C ICS	4
PSIB 12D ICS	4
PSIB 12E ICS	4
PSIB 12F ICS	4
PSIB 12G ICS	4
PSIB 12H ICS	4
PSIB 12I ICS	4
PSIB 12J ICS	4
PSIB 12K ICS	4
PSIB 12L ICS	4
TOTAL CREDITS	48

Admission Requirements

- * FOM 12 (minimum 60%) or PreCal 11 (minimum 67%) or assessment
- * English 12 (minimum of 60%) or assessment or September enrollment in English 12 with an English teacher recommendation form
- * Participate in an interview with the SIP Coordinator and Computer Science Department Head

Costs: books and modules \$250, expendable & lab supplies \$250

Seat Availability

September	2
-----------	---

Interurban Campus

Certificate — Credential

Recommended Secondary Courses

- * Information Technology 11/12
- * Computer Programming 11/12
- * Electronics 11/12

Career Opportunities

- * computer-related careers, including programming, web development, and customer service, and in network operations

TECHNOLOGIES EXPLORATION TEAC 105 Course

39 hours—13 weeks



PSIB 12A TEAC 4
TOTAL CREDITS 4

Admission Requirements

- * This course provides an introduction to careers and basic skills in Computer Science, Electronic and Computer Engineering Technology, Civil Engineering Technology, and Mechanical Engineering Technology
- * This course is intended to provide participants with an opportunity to explore the 4 technology areas, and support their career and post-secondary decision making
- * Must be in grades 10-12

Seat Availability

September	18 *1 section	February	18 *4 sections
-----------	------------------	----------	-------------------

Interurban Campus

Recommended Secondary Courses

- * Science 9/10
- * Physics 11

Career Opportunities

- * Multiple fields in Engineering