

# Uniforms

## Crested Vest or Jacket – REQUIRED – Special order through the school



All students **MUST** have a crested vest or jacket at school each day.

## Shirt - White



Golf Shirts

Turtleneck

Dress Shirt

All shirts must have a collar.

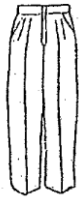
Blouses must be a plain white blouse.

**No attached vests**

**No t-shirts**

**No logos**

## Pants - Dark Navy



Dress pants

- **No cargo pants**    **No capris**

- **No corduroy pants**

- **No 'jean style pants'**

- **No studs or other adornments**

- **No fleece or yoga pants**

- **No sweat pants, jogging pants or leggings**

## Shoes

- black shoes

- non-marking black sole

- dark laces or velcro

- dress shoes or running shoes

- **If your child has one pair of shoes please make these black runners**

- **No boots**    **No adornments on shoes**

## Shorts - Dark Navy



Dress walking shorts

Modest length

- **No cargo shorts or zip off shorts**

## Socks

Boys

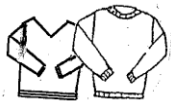
- solid colour: navy or black

Girls

- navy or white knee socks or tights

- **with pants** – solid coloured navy, black socks    **No ankle socks**

## Sweaters - Dark Navy



Knit pullover

Crew neck or v- neck

Sweater Vest

Button or zippered cardigan



**No hoods**

## Tunics and skirts



**Dark Navy Tunic**

- plain, knee length

**Dark Navy Skirt**

- A-line, knee length

**Dark Navy Skort**

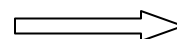
- walking shorts with panel

- modest length

**No denim or ruffles**

**No silver or coloured buckles**

**Please turn over**



## **Additional Information**

**Hair** – Hair cuts should be conservative – **No Mohawks, faux-hawks or extreme cuts/spikes**

No unusual colours

***Simple headbands, barrettes in navy and white are permitted.***

**Jewellery** – small stud earrings are permitted - **No rings or necklaces**

**Skin** – **No rub-on tattoos or other body art**

**Nails** – **No nailpolish**

### **Recommendations**

1. Navy bike shorts are recommended underneath skirts and dresses. They may not exceed the length of the garment.
2. Gym - Dark navy short and white t-shirts are suggested items for gym for classes that do change.